

Product datasheet for **RR216971**

Tctn1 (NM_001177613) Rat Tagged ORF Clone

Product data:

Product Type:	Expression Plasmids
Product Name:	Tctn1 (NM_001177613) Rat Tagged ORF Clone
Tag:	Myc-DDK
Symbol:	Tctn1
Synonyms:	RGD1566266
Mammalian Cell Selection:	Neomycin
Vector:	pCMV6-Entry (PS100001)
E. coli Selection:	Kanamycin (25 ug/mL)



[View online »](#)

ORF Nucleotide Sequence:

>RR216971 representing NM_001177613
 Red=Cloning site Blue=ORF Green=Tags(s)

TTTTGTAATACGACTCACTATAGGGCGGCCGGAATTCGTCGACTGGATCCGGTACCGAGGAGATCTGCC
 GCC**GCGATCGCC**

ATGGGGTCGCGGTGTCTTCCGCCGCTCCTGCTGGTGTCTCTAACTGCTGCACCTCTTCGAGACCCAGG
 TCGTTGCCACCCGGCTGCGGCCACCCCGGTGGTACGAATGAGGATCTCAACTTCACCGAGGCCACCCC
 CGCCACTCTCAGACCCTCCTGGTCTCCTAGGACCCCGGAACTCCAGGCCACCGGAGCTCTCTGGCCCC
 AGGCCACCCCGGTACGGACGTTGCTGCTCTGTGTGTCTGCGACCTGCTTCTGCACAGTGTGATATCA
 ACTGCTGTTGTGACCCTGACTGCAGCCCTGGGGATTTACAGCTCTTCTCTGCCTGCTCCATCCCAGTTGT
 CACGGGTGATCGGCAGTTTTGTAGTCAGAAGGCAGCCTTCTACTCAATGAATTTGACAGCAGACCCACCT
 CACCGCGACTTTAACTCATTGACCAGATCAACCCTTCCATCTTCTGTATTATTTCAAACAAGC
 CGCGCTGTCTTTGCCAATCCGGAAGTCCAGATGAAAAAATTTTGTAGACTGATGGGAGCATCAGG
 TGGCTTACACTGAGTCCGAGTCCAGGATTCCTTCCACAGCCACCTCAGATGACCCACAGCCACTAAA
 TATGAGTATGGAGCCCTTCTGCAGACCGCAGGTGAATCTTCAGGGTCATTTCTGAAACTGCCTTACCTC
 TCACTTCACTCTGTGTGCAGATGAGAACCCTGCAGCATTCTGGTGAACCAGGCCCTTCAATGCAGCCG
 AAGGGTGGCCATAGAAGAGTGTGAAAGAATGGAAGCTCTCAGCATGGCTCACTACAGCAGCCCTGCCATT
 CTGAGGGTGCCTAATTAACGACACAGGTCTCCATCAAGATCCAGTCTATAATGTATCGGTCTCTGAATC
 ACACACTGACCCAGTTAGAAGGCCGTGGTATCCTGCGGCCATCTCTGGTCACTGCGCAAGACAGACT
 CTGCAGCAACGTTGTTCTCCAGTAAAGTACAGTCTGTATACACAGCCAGCGGCCAGATCCAGGAAGCC
 GGCCTCTCCCTCGTGTGGGACGCTCATCAGCACCGTGAGTCTCCTGCAGCAGAAGTTTGTAGATTCACT
 TTATTCAGCATGGCACCAGCCTGTTCTCTCAGTGGCAACCCTGGTTACAGAGTGGGACTCCCGCTGGC
 CGCTGGCTTTCAGCCTCAGAAGGGGTCTGGGATTATTCAGACAACGAACAGACAAGGCCAGCTTACTATT
 CTTCTGACAGCAAGCAGGACTGCCTGGCCAGCCAGGGCAGCGGGCTCCTGTGCTGTTTGGCTACA
 ATGTGCAGTCTGGCTGTGAGTCAAGTTGACAGGCACCATCCCATGCGGGCTTCTGGCACAGAAGATGCA
 GGATCTGCTGAGAGGCCAGGCCCTTCCCTGACTACGTGGCTGCGTTTGGAACTCACGAGCCAGGATGTG
 CAGGACTGGGTGCCTGTGCACTTGTCAACCACTCCTCCAACACGAAGGGCTCTTCCAGCTTCTGTGG
 CTTTGGGTATAGAAGTAAATGGACTAAGTATGGGTCCCTGCTGAACCCAGGCCAGGATAGTAAATGT
 CACTGCCAGCTCATCTCAATCCAGAGCCCTCCAGGGCTGAGAGGACCATGGTCATTTCCACTGCA
 GTGACATTTGTGGATGTGTCAGCCCTGCAGAGGCAGGCTCCGAGCCCCACCCACCATCAATGCCAGGC
 TGCCCTCAGCTTCTTCCCATTGTGA

ACGCGTACGCGGCCGCTCGAGCAGAACTCATCTCAGAAGAGGATCTGGCAGCAAATGATATCCTGGATT
 ACAAGGATGACGACGATAAGGTTTAA

Protein Sequence:

>RR216971 representing NM_001177613
 Red=Cloning site Green=Tags(s)

MGSRCLPPLLLVLLNCTSSSTQVVATPAAATPVVTNEDLNFTEATPATLRPSWSPRTPGTPRPPELSPG
 RPTPVTDVAALCVCDLLPAQCDINCCDPDCSPGDFSVFSACSIIPVVTGDRQFCSQKAIFYSMNLADPP
 HRDFKLIHQINPSIFCIHISNYKPAISFANPEVPDENNFDRMLMGASGGFTLSAESGVPSTATSDDPQPTK
 YEYGALLQTAGESSGSFLKLPSTLSSLCADENPAAFLVNQAFECRRVAIEECERMEALSMAHYSSPAI
 LRVPNSTTQVSIKIQSIMYRSLNHTLTQLEGRGILRPSLVSTGQDRLCSNVVLQVKYSLLYTASGQIQEA
 GLSLVLGTLISTVSLQKFEIHFIQHGKPVPLSGNPGYRVGLPLAAGFQPQKSGSIIQTNRQQLTI
 LRSTGKQDCLASHGQRAPVLFYNNVQSGCQLRLTGTIPCGLLAQKMQDLLRGQAFPDYVAAFNSRAQDV
 QDWVPVHFVTHSSNTKGSCQLPVALGIEVKWTKYGSLLNPQARI VNVTAQLISIPEPLPGPERTMVI STA
 VTFVDVSAPAEAGFRAPPTINARLPFSFFFFPV

TRTRPLEQKLISEEDLAANDILDYKDDDDKV

Restriction Sites:

Sgfl-MluI

Cloning Scheme:

Cloning sites used for ORF Shutting:



* The last codon before the Stop codon of the ORF

ACCN: NM_001177613

ORF Size: 1779 bp

OTI Disclaimer: The molecular sequence of this clone aligns with the gene accession number as a point of reference only. However, individual transcript sequences of the same gene can differ through naturally occurring variations (e.g. polymorphisms), each with its own valid existence. This clone is substantially in agreement with the reference, but a complete review of all prevailing variants is recommended prior to use. [More info](#)

OTI Annotation: This clone was engineered to express the complete ORF with an expression tag. Expression varies depending on the nature of the gene.

Components: The ORF clone is ion-exchange column purified and shipped in a 2D barcoded Matrix tube containing 10ug of transfection-ready, dried plasmid DNA (reconstitute with 100 ul of water).

Reconstitution Method:

1. Centrifuge at 5,000xg for 5min.
2. Carefully open the tube and add 100ul of sterile water to dissolve the DNA.
3. Close the tube and incubate for 10 minutes at room temperature.
4. Briefly vortex the tube and then do a quick spin (less than 5000xg) to concentrate the liquid at the bottom.
5. Store the suspended plasmid at -20°C. The DNA is stable for at least one year from date of shipping when stored at -20°C.

RefSeq: [NM_001177613.1](#), [NP_001171084.1](#)
RefSeq Size: 4061 bp

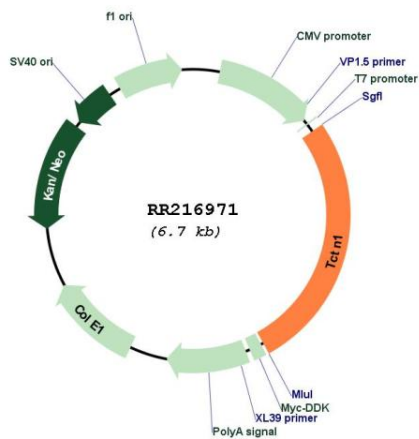
RefSeq ORF: 1782 bp

Locus ID: 304486

Cytogenetics: 12q16

MW: 63.7 kDa

Product images:



Circular map for RR216971