

Product datasheet for **RR216954**

Mpp3 (NM_053668) Rat Tagged ORF Clone

Product data:

Product Type:	Expression Plasmids
Product Name:	Mpp3 (NM_053668) Rat Tagged ORF Clone
Tag:	Myc-DDK
Symbol:	Mpp3
Synonyms:	CSG18; Dlg3; Dusp3
Mammalian Cell Selection:	Neomycin
Vector:	pCMV6-Entry (PS100001)
E. coli Selection:	Kanamycin (25 ug/mL)



[View online »](#)

ORF Nucleotide Sequence:

>RR216954 representing NM_053668
 Red=Cloning site Blue=ORF Green=Tags(s)

TTTTGTAATACGACTCACTATAGGGCGGCCGGAATTCGTCGACTGGATCCGGTACCGAGGAGATCTGCC
 GCC**CGGATCGCC**

ATGCCGCTACTGTCCGAAGACTCGGTTTGCATGAGACCTGGCACTCCTCACCTCTCAGCTCAGGCCTG
 ACTCCAACCACAGGGAGGAGATGGCTTCTGAGGGATGTCTCAGTGAGAAGAGCCTCGTTACTTAAT
 GAAGATTCACGAGAACTCCGCTATTATGAGAGGCAGAGTCCGACCCCGTCTACACAGCGCCATGGCC
 CTTGCTGAGGATGTGATGGAGAACTGCAGGCTGCCTCGGTGCACAGCGATGAACGGGAGCTGCTACAGC
 TGCTGTCCACCCCCACCTCAGGCTGTGCTCATGGTACACGACACAGTTGCCAGAAGAACTTCGATCC
 TGTTCTGCCCCCTCTGCCTGATAATATCGACGAGGATTTGAAGAGGAATCAGTGAAGATTGTTCCGCTT
 GTCAAGAATAAGGAGCCCTGGGTGCCACTATCCGAAGGATGAGCATTGGGGGCTGTCGTGGTGGCCA
 GGATCATGCGAGGGGTGCAGCGGATCGGAGCGGTCTGGTCCACGTTGGTACGAGCTCCGGGAGGTGAA
 TGGGATCACCGTCTGCACAAACGTCCAGACGAGATCAGCCAAATCTGGCCCAATCCCAGGGATCCATC
 ACCCTCAAGATCATCCCTGCCACCCAGGAGGAAGACCGCTTCAAAGAGAGCAAGGTTCATGCGTGCC
 TCTTCCATATGACCCTCGGGAGGACCGTGCCATCCCCTGCCAGGAGGCAGGCCTGCCCTCCAGCAGAG
 GCAGGTCTGGAGGTGGTGAAGCAAGTACCCACCTGGTGGCAGGCCAAGAGAGTGGGAGACCAAC
 CTTGAGCTGGCCTATTCCCTCCAAGCAGTTCAGGAGAGGAGGCTAAGCTACCGGAGAACCCTGGCA
 CCATACCAAGCCCCAGAACCTCAGAAAGCCCTCTATGATCAGCCTTGACAAAGAGACCTGTGACTG
 TGATGGTACTTCAAAGGACACTATGTGGCTGGCTTCGAGAAGCTCCGACTGGGCTGCAGAGAGAGG
 CTGACTGGTTCACAGGAAGTAAAGTCCCTGTAGGAGCTGAGTCTCAGGTGCTGCTGACCTACGAGGAAG
 TGGCCAGGTACCAACACCAGCCTGGGAGCGGTCCCGCTGGTGGTCTCATTGGTCTCTGGGAGCCCA
 CCTGCACGAGCTGAAGCAAAGGTGGTGGCTGAGGACCCCGCAGCATTGTTGGTGTGCTGTTCCACACAC
 ACCAGGCCCGGAAGAGCCACGAGAGAGAAGGGTTCGAGTATCATTGTTCTCCAAGCAAGCATTGAGG
 CCGACATCCAGCACAACAAGTTCCTGGAACATGGAGAACATAAGGAGAATCTCTACGGGACCAGCCTGGA
 GGCCATTAGACCGTATGGCCAAAAACAAGTTGTTTGGTGGATGTAGAACCAGAAGCACTAAGACAC
 CTGAGGACCCCGAGTTTAAAGCCCTATGTTATATTTGTGAAGCCTGCAATTCAGGAGAAAAGGAAGCGC
 CGCCGGTGTCCCAGACTCTGAGGACCCAGCAACTCCACTTGATGAACAGCAGCAAGAGATGGCCGCTC
 TGCTGCCTTATTGATCAGCACTACGGACCTGATAGACACCGTCTGCTACGGCAGGACCTGCAGAGT
 GTCTGCAGCCAGCTCCGAGCTGTCATAGAGTCGCTGAGCAAGGACACTTACTGGGTACCCATCAGCTGG
 TGAGG

ACGCGTACGCGGCCGCTCGAGCAGAACTCATCTCAGAAGAGGATCTGGCAGCAAATGATATCCTGGATT
 ACAAGGATGACGACGATAAGGTTTAA

Protein Sequence:

>RR216954 representing NM_053668
 Red=Cloning site Green=Tags(s)

MPVLSSEDSGLHETLALLTSQLRPDSNHREEMGFLRDVFSEKSLGYLMKIHEKLYRYSPTPVLHSAMA
 LAEDVMEELQAASVHSDERELQLLSTPHLRVLMVHDTVAQKNFDPVLPPLPDNIDEDFEEESVKIVRL
 VKNKEPLGATIRRDEHSGAVVVARIMRGGAAADRSLVHVGDELREVNIGITVLHKRPDEISQILAQSQSGSI
 TLKIIIPATQEEDRFKESKVFMRALFHYDPREDRAIPCQEAGLPFQQRQVLEVVSDQDPTWWQAKRVGDTN
 LRAGLIPSKQFQERRLSYRRTTGTIPSPQNLKPLDYDQPCDKETCDCDGYFKGHYVAGLRRSFRLGCRER
 LTGSQEVKVPVGAESQVLLTYEEVARYQHQPERSRLVVLIGSLGAHLHELKQRVVAEDPQHFVAVPHT
 TRPRKSHEREGVEYHFVSKQAFEADIQHNKFLHGEHKENLYGTSLEAIQTMMAKNKVLVDVEPEALRH
 LRTPEFKPYVIFVKPAIQEKRTPPVSPDSEDPATPLDEQQQEMAASAAFIDQHYGHLIDTVLVRQDLQS
 VCSQLRAVIESLSKDTYWVPIWVR

TRTRPLEQKLISEEDLAANDILDYKDDDDKV

Restriction Sites:

SgfI-MluI

Cloning Scheme:


ACCN: NM_053668

ORF Size: 1755 bp

OTI Disclaimer: The molecular sequence of this clone aligns with the gene accession number as a point of reference only. However, individual transcript sequences of the same gene can differ through naturally occurring variations (e.g. polymorphisms), each with its own valid existence. This clone is substantially in agreement with the reference, but a complete review of all prevailing variants is recommended prior to use. [More info](#)

OTI Annotation: This clone was engineered to express the complete ORF with an expression tag. Expression varies depending on the nature of the gene.

Components: The ORF clone is ion-exchange column purified and shipped in a 2D barcoded Matrix tube containing 10ug of transfection-ready, dried plasmid DNA (reconstitute with 100 ul of water).

Reconstitution Method:

1. Centrifuge at 5,000xg for 5min.
2. Carefully open the tube and add 100ul of sterile water to dissolve the DNA.
3. Close the tube and incubate for 10 minutes at room temperature.
4. Briefly vortex the tube and then do a quick spin (less than 5000xg) to concentrate the liquid at the bottom.
5. Store the suspended plasmid at -20°C. The DNA is stable for at least one year from date of shipping when stored at -20°C.

RefSeq: [NM_053668.1](#), [NP_446120.1](#)

RefSeq Size: 2822 bp

RefSeq ORF: 1758 bp

Locus ID: 114202

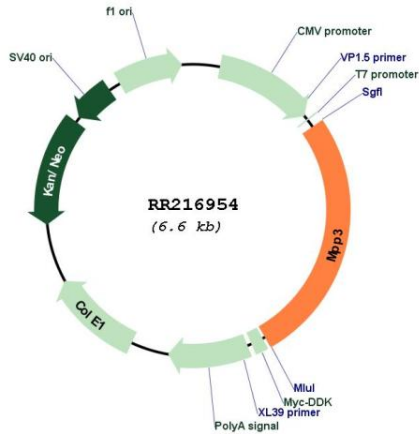
UniProt ID: [O88954](#)

Cytogenetics: 10q32.1

MW: 66.6 kDa

Gene Summary: a protein related to CASK that may play a role in synaptic vesicle exocytosis and synaptic junctions [RGD, Feb 2006]

Product images:



Circular map for RR216954