

Product datasheet for **RR216951**

Mapk4 (NM_019319) Rat Tagged ORF Clone

Product data:

Product Type:	Expression Plasmids
Product Name:	Mapk4 (NM_019319) Rat Tagged ORF Clone
Tag:	Myc-DDK
Symbol:	Mapk4
Mammalian Cell Selection:	Neomycin
Vector:	pCMV6-Entry (PS100001)
E. coli Selection:	Kanamycin (25 ug/mL)



[View online »](#)

ORF Nucleotide Sequence:

>RR216951 representing NM_019319
 Red=Cloning site Blue=ORF Green=Tags(s)

TTTTGTAATACGACTCACTATAGGGCGGCCGGAATTCGTCGACTGGATCCGGTACCGAGGAGATCTGCC
 GCC**CGGATCGCC**

ATGGCAGAGAAAGGTGACTGCATCGCCAGTGTCTACGGTACGACCTTGGTGGGCGCTTCACTGACTTCC
 AACCCCTCGGCTTCGGGGTCAACGGGCTGGTGTCTCGGCTACGGACAGCAGGGCTTGCCGGAAGGTAGC
 CGTGAAGAAGATTGTGCTGAGTGACGCACGAAGCATGAAGCACGCGCTCCGAGAGATCAAAATCATCCGG
 CGCCTGGACCACGACAACATCGTCAAAGGTACGAGGACTGGGACCCAAGGGTAGCGATCTGCAGGGCG
 AGCTCTTTAAGTTCAGCGTGGCTTATATTGTCCAAGAGTACATGGAGACTGACCTGGCATGCCTGCTAGA
 GCAGGGCACGCTGACCGAGGAGCAGCTAAGCTATTCATGTACCAGCTGCTGCGTGGGCTCAAGTACATC
 CACTCTGCCAACGTGTTGCACAGGGACCTGAAGCCCGCCAACATTTTCATCAGCACGGAGGACCTCGTGC
 TGAAGATCGGGGATTTCCGGCTGGCCAGAATCGCGGACCAGCATTACTCCACAAGGGTTATCTGTCCGA
 AGGGTTGGTGACAAAGTGGTACCCTCTCCAGCTGCTCCTGTCCCGAAACACTACACGAAAGCCATC
 GATATGTGGGCAGCTGGCTGCATCCTAGCGGAGATGCTCACGGGGAAAATGCTCTTTGCTGGGGCTCAGG
 AGCTTGAGCAGATGCAGCTCATCTAGACACCATCCCTGTAGTGCGGGAGGAAGACAAGGAGGAGCTGCT
 CAGGGTGTGCCGTCCTTTGTCAGCAGCACTTGGGAGGTGAAGAGGCCACTGCGTAAGCTACTCCCGGAT
 GTCAACCGTGAAGCCATTGACTTTCTGGAGAAGATCCTGACCTTTAACCCATGGACCGCCTAACAGCTG
 AGATGGGGCTACAGCATCCTTACATGAGCCCGTATTCTGTCCCGGAGGATGAGCCACCTCACAAACCC
 CTTCCGCATTGAAGACGAGATCGACGACCTCGTACTGATGGTGCAGTCAGAGCCAGCTCTCCAAGTGG
 GACAGGTATCCCGTGAGCCTGTCGTGAGATCTGGAATGGCGGCCGACCGCTGTGAGGACCGGAGGAGG
 TGCAGCGCAGCCACGTGCTGGCTCTACTCCGCTGGCGGAGGATGTTGAGTGGACCCACGCAAGGACTC
 ACAGAGCAGCTCCGAGCGCTTCTGGAGCAGTCGCACTCGTCCATGGAGCGCGCCTTTGAGGCCGACTAT
 GGACGGTCTGCGACTACAAAGTGGGGTCTCCGTCCTACCTGGACAAGCTGCTGTGGCGGACAACAAGC
 CCCACCACTACTCGAAACCAAGCTCATCTGGACCTGTCGCACTGGAAGCAGGCGGCCAGCGCACCCCC
 CAGGGTGCAGTAGCAGCAGACCCAGTGTACGTGAGGATGAGCCAGCAAGCCTCTTTCTGGAGATCGCG
 CAGTGGGTCAAGAGCACACAAGGTGGCCCTGAGCGTGCCAGTCTCCCGCTGATGCCCCAGACCCCGTC
 TCTCTGCTTACCCCGGGACACCAACACCCATTGATGGGGTGCCAGTCCCAATTGACTTAGATGT
 GTTCATCTCGCGTCCCTAAAGCTCTGCACCAACCTGAGGACCTACCGGAAAACAACTGGGCGACCTG
 AATGGTGGTGCATCTCCGAGCACCCCGCGACCTCGTGCAAACAGAGGCCTTCTCAAAGAAAGGTGG

ACGCGTACGCGGCGCTCGAGCAGAAACTCATCTCAGAAGAGGATCTGGCAGCAAATGATATCCTGGATT
 ACAAGGATGACGACGATAAGGTTTAA

Protein Sequence:

>RR216951 representing NM_019319
 Red=Cloning site Green=Tags(s)

MAEKGDCIASVYGYDLGGRFTDFQPLGFGVNLVL SATDSRACRKYAVKKIVLSDARSMKHALREIKIIR
 RLDHDNIVKYEVVLGPKGSDLQGE LFKFSVAYIVQEYMETDLACLLEQGLTEEHAKLFMYQLRLGLKYI
 HSANVLRDLK PANIFISTEDLV LKIGDFLAR IADQHYSHKGYLSEGLVTKWYRSPRLLLSPNNTKAI
 DMWAAGCILAEMLTGKMLFAGAHELEQMQLILDTIPVVREEDKEELLRVMPFSVVSSTWEVKRPLRLLPD
 VNREAI DFLEKILTFNPM DRLTAEMGLQHPYMSPYSCPEDEPTSQHPFRIEDEIDDLV LMAASQSQLSNW
 DRYPVSLSSDLEWRPDRCDASEVQRDP RAGSTPLAEDVQVDP RKDSQSSSERFLEQSHSSMERAFEADY
 GRSCDYKVGSPSYLDKLLWRDNKPHHYSEPKLILDL SHWKQAASAPPRAAVAADPV SREDEPASLFLEIA
 QWVKSTQGGPERASPPDAPEPRL SASPPGHPTPIDGGASPQFDLDFV I SRALKLCTKPEDLPENKLGDL
 NGACISEHPGDLVQTEAF SKERW

TRTRPLEQKLISEEDLAANDILDYKDDDDKV

Restriction Sites:

Sgfl-MluI

Cloning Scheme:


ACCN: NM_019319

ORF Size: 1749 bp

OTI Disclaimer: The molecular sequence of this clone aligns with the gene accession number as a point of reference only. However, individual transcript sequences of the same gene can differ through naturally occurring variations (e.g. polymorphisms), each with its own valid existence. This clone is substantially in agreement with the reference, but a complete review of all prevailing variants is recommended prior to use. [More info](#)

OTI Annotation: This clone was engineered to express the complete ORF with an expression tag. Expression varies depending on the nature of the gene.

Components: The ORF clone is ion-exchange column purified and shipped in a 2D barcoded Matrix tube containing 10ug of transfection-ready, dried plasmid DNA (reconstitute with 100 ul of water).

- Reconstitution Method:**
1. Centrifuge at 5,000xg for 5min.
 2. Carefully open the tube and add 100ul of sterile water to dissolve the DNA.
 3. Close the tube and incubate for 10 minutes at room temperature.
 4. Briefly vortex the tube and then do a quick spin (less than 5000xg) to concentrate the liquid at the bottom.
 5. Store the suspended plasmid at -20°C. The DNA is stable for at least one year from date of shipping when stored at -20°C.

RefSeq: [NM_019319.1](#), [NP_062192.1](#)

RefSeq Size: 3596 bp

RefSeq ORF: 1752 bp

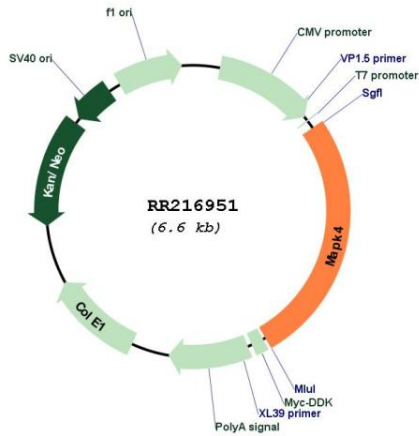
Locus ID: 54268

Cytogenetics: 18q12.2

MW: 65.6 kDa

Gene Summary: mitogen activated protein kinase found in brain; may be involved in manic-depressive illness [RGD, Feb 2006]

Product images:



Circular map for RR216951