

Product datasheet for **RR216945**

Gls2 (NM_001270787) Rat Tagged ORF Clone

Product data:

Product Type:	Expression Plasmids
Product Name:	Gls2 (NM_001270787) Rat Tagged ORF Clone
Tag:	Myc-DDK
Symbol:	Gls2
Synonyms:	Ga
Mammalian Cell Selection:	Neomycin
Vector:	pCMV6-Entry (PS100001)
E. coli Selection:	Kanamycin (25 ug/mL)



[View online »](#)

ORF Nucleotide Sequence:

>RR216945 representing NM_001270787
 Red=Cloning site Blue=ORF Green=Tags(s)

TTTTGTAATACGACTCACTATAGGGCGGCCGGAATTCGTCGACTGGATCCGGTACCGAGGAGATCTGCC
 GCC**CGCATCGCC**

ATGCCTTTTCCTTTAGATGTGGGGCTTTGGGTCCGCCGCTCGGGCGGTGAGGTGCTGCCGCCGGGA
 GGGCGTTTGGGCAGGTCGGTCTTCGAGATGATGCCTGTCCAAGTATGCCTCGAACAGTGGCATGTTGCC
 TCGACTTGGTGACCTGCTTTTCTACACCATTGCAGAGGGGCAGGAACGCATCCCCATCCATAAGTTCACC
 ACGGCCCTGAAGGCCACTGGACTGCAGACGTGAGACCCACGGCTCCAGGACTGCATGAGCAAGATGCAGC
 GCATGGTCCAAGAGTCCAGCAGTGGTGGCTCTTGGACCGAGAAGTCTTCCAAAAGTGTGTGAGCAGCAA
 CATTGTGCTCCTGACTCAGGCATTCCGGAAGAAGTTTGTCACTTCTGACTTTGAGGAGTTCACAGGCCAT
 GTGGATCGTATATTTGAGGATGCCAAAGAGCTCACTGGAGGCAAAGTGGCAGCCTACATCCCTCACCTGG
 CCAAGTCAAACCCAGATCTTGGGGCGTCTCCCTGTGCACTGTGGATGGGCAGCGACACTCTGTGGCCA
 CACGAAGATCCCTTCTGCCTACAGTCTGTGCAAGCCACTCACTTACGCCATCTCCGTGAGCACCTTA
 GGCACCGACTACGTGCACAAGTTCGTGGCAAGGAACCCAGTGGTCTGCGCTATAACAAACTCTCCCTCA
 ACGAGGAAGGAATCCCTATAACCCCATGGTCAATGCTGGTGCTATTGTGGTCAGCTCCCTGATCAAGAT
 GGACTGTAAACAAAGCAGAGAAGTTTACTTTGTGTACAGTATCTGAACAAGATGGCTGGGAATGAATTC
 ATGGGGTTCAGCAATGCCACATTCAGTCAGAGAAGGAGACTGGGGATCGGAATTACGCCATTGGCTATT
 ACCTCAAGGAGAAGAAGTCTCCCTAAGGGAGTGGACATGATGGCTGCCCTTGATCTCTATTTCCAGCT
 GTGCTCTGTGGAGTTACCTGTGAGTCAGGCAGTGTGATGGCGGCCACTTTGCCAATGGCGGCATCTGC
 CCCATCACAGGGGAGAGCGTGTGAGTGGGAAGCCGTGCGCAACACCCTCAGCCTCATGCACCTCCTGTG
 GCATGTGACTTCTCGGGCCAGTTTGCCTTCCAGTGGCGCTGCCAGCCAAGTCACTGTGTGGGGAAC
 CATCCTCCTGGTTGTACCCAATGTATGGGATGATGTGTCTGTACCCCGTTAGACAAGCTGGGGAAC
 AGCCACAGGGGCATCAGCTTCTGCCAGAAGTTGGTGTCTCTGTTAACTCCACAACACGACAACCTGC
 GGCCTGTGCTCGGAAGTTAGACCCACGGAGGGAAGGGGGGAAGTTTCGGAACAAGACCGTGGTGAACCT
 GTTATTTGCTGCATATAGTGGAGATGTCTCAGCTCTTCGAAGTTTGCCTTGTCTGCCGTGGATATGGAG
 CAGAAGGACTATGATTCCTGCACAGCCCTACATGTGGCGGCAGCGGAAGGACACATTGACGTTGTCAAGT
 TTCTGATCGAGGCTTCAAAGTGAATCCTTTTGTCAAGGACAGGTGGGGCAACATTCCTCGGATGATGC
 CGTGCAGTCAATCACCTGGAGGTGTCAAACTGCTTCAGGATTACCATGACTCTACATGCTGTCTGAG
 ACTCAAGTCTGAGGTAGCAGCTGAGACTCTGTCAAAGAGAAGTCTAGAGAGCATGGTG

ACGCGTACGCGGGCCGCTCGAGCAGAAACTCATCTCAGAAGAGGATCTGGCAGCAAATGATATCCTGGATT
 ACAAGGATGACGACGATAAGGTTTAA

Protein Sequence:

>RR216945 representing NM_001270787
 Red=Cloning site Green=Tags(s)

MPFPLDVGLWVRRARAVRCCPPGRAFGQVGLRDDACPSDASNSGMLPRLGDLLFYTIAEQERIPHKFT
 TALKATGLQTSDPRLQDCMSKMRMVQESSGGLLDRELFQKCVSSNIVLLTQAFRKKFVIPDFEFTGH
 VDRI FEDAKEL TGGKVAAYIPHLAKSNPDLWVSLCTVDGQRHVSVGHTKIPFCLQSCVKPLTYAIVSVSTL
 GTDYVHKFVKGKPSGLRYNKL SLNEEGIPHNPMVNAGAI VVSSL IKMDCNKA EKFDVFLQYLNKMAGNEF
 MGF SNATFQSEKETGDRNYAIGYYLKEKKCFPKGVDMMAALDLYFQLCSVEVTCESGSVMAATLANGGIC
 PITGESVL SAEAVRNTLSLMHSCGMYDFSGQFAFHVGLPAKSAVSGAILLVVPNVMMCLSPPLDKLGN
 SHRGISFCQKLVSLFNFNHNYDNLRHRCARKLDRREGGEVRNKTVVNLFFAAYSGDVSALRRFALSVDME
 QKDYDSRTALHVAAAEGHIDVVKFLIEACKVNPVFKDRWGNIPLD DAVQFNHLEVVKLLQDYHDSYMLSE
 TQAEVAAETLSKENLESMV

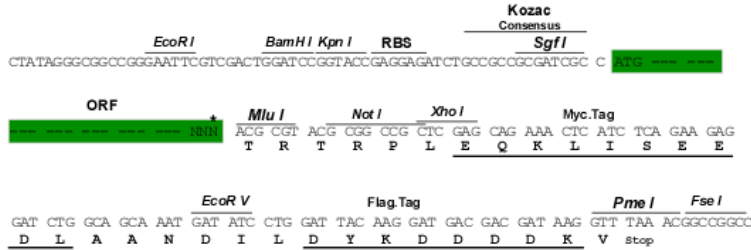
TRTRPLEQKLISEEDLAANDILDYKDDDDKV

Restriction Sites:

Sgfl-MluI

Cloning Scheme:

Cloning sites used for ORF Shuttling:



* The last codon before the Stop codon of the ORF

ACCN: NM_001270787

ORF Size: 1737 bp

OTI Disclaimer: The molecular sequence of this clone aligns with the gene accession number as a point of reference only. However, individual transcript sequences of the same gene can differ through naturally occurring variations (e.g. polymorphisms), each with its own valid existence. This clone is substantially in agreement with the reference, but a complete review of all prevailing variants is recommended prior to use. [More info](#)

OTI Annotation: This clone was engineered to express the complete ORF with an expression tag. Expression varies depending on the nature of the gene.

Components: The ORF clone is ion-exchange column purified and shipped in a 2D barcoded Matrix tube containing 10ug of transfection-ready, dried plasmid DNA (reconstitute with 100 ul of water).

- Reconstitution Method:**
1. Centrifuge at 5,000xg for 5min.
 2. Carefully open the tube and add 100ul of sterile water to dissolve the DNA.
 3. Close the tube and incubate for 10 minutes at room temperature.
 4. Briefly vortex the tube and then do a quick spin (less than 5000xg) to concentrate the liquid at the bottom.
 5. Store the suspended plasmid at -20°C. The DNA is stable for at least one year from date of shipping when stored at -20°C.

RefSeq: [NM_001270787.1](#), [NP_001257716.1](#)

RefSeq Size: 2798 bp

RefSeq ORF: 1740 bp

Locus ID: 192268

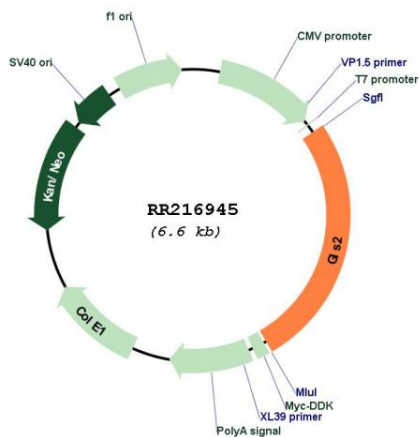
UniProt ID: [P28492](#)

Cytogenetics: 7q11

MW: 63.9 kDa

Gene Summary: first enzyme of glutamine catabolism in liver [RGD, Feb 2006]

Product images:



Circular map for RR216945