

## Product datasheet for **RR216911**

### Galnt16 (NM\_001100863) Rat Tagged ORF Clone

#### Product data:

|                           |   |
|---------------------------|---|
| Product Type:             | Expression Plasmids                         |
| Product Name:             | Galnt16 (NM_001100863) Rat Tagged ORF Clone |
| Tag:                      | Myc-DDK                                     |
| Symbol:                   | Galnt16                                     |
| Synonyms:                 | Galnt1                                      |
| Mammalian Cell Selection: | Neomycin                                    |
| Vector:                   | pCMV6-Entry (PS100001)                      |
| E. coli Selection:        | Kanamycin (25 ug/mL)                        |



[View online »](#)

**ORF Nucleotide Sequence:**

>RR216911 representing NM\_001100863  
 Red=Cloning site Blue=ORF Green=Tags(s)

TTTTGTAATACGACTCACTATAGGGCGGCCGGAATTCGTCGACTGGATCCGGTACCGAGGAGATCTGCC  
 GCC**CGGATCGCC**

ATGAGGAAGATCCGCGCCAATGCCATCGCCATCCTGACCGTAGCCTGGATCCTGGCACTTTCTACTACT  
 TATGGCAGGACAACCGAGCCATGCAGCATCCTCCGGCGCCCGCGCGCAGAGGGCCGGAGGCAGACC  
 GGAGCAGCTCCGCGAGGACCGCACCATTCGCTCATTGTGACAGGAACACCGTCAAAAGGCTTTGATGAG  
 AAGGCGTACCTGTGAGCAAGCAGCTGAAGCCTGGAGAGGACCCATACAGACAACATGCCTTCAACCAAC  
 TGGAGAGTGACAAGCTGAGCCCAGACCGACCTATCCGGGACACCCGCCATTACAGTTGCCATCCTTGTC  
 CTATTCTCGGACCTGCCAGCCACAGTGTATCATCACCTTCCACAACGAGGCTCGCTCCACACTCCTG  
 CGCACAGTGAAGAGTGTCTGAACCGAAGTCTGCCGGCTTGATCCAGGAGATCATACTAGTGGATGACT  
 TCAGTTCCGGATCCTGAAGACTGCTTGTCTGACCAGGATCCCCAAGTCAAGTGCCTTCGAAATGACAA  
 ACGAGAAGGATTGATCCGGTCCCGGTTGTTGGGGCAGATGTGGCAGGAGCCTCAGTTCTCACTTTTCTG  
 GATAGTCACTGTGAGGTGAACGTGAGTGGCTGCAGCCAATGCTGCAGCGGGTATGGAGGACCACACCC  
 GTGTGGTGAAGCCATCATTGACGTCATCAGCCTGGACAATTTGCTTACCTGGCAGCATCTGCAGATCT  
 TCGAGGAGGATTCGACTGGAGTCTGCACTTCAAGTGGGAGCAGATCCCACTGGAGCAGAAGATGACCCGG  
 ACAGATCCCACCAAAACCATCAGGACACCTGTTATAGCTGGAGGAATCTTCGTGATCGACAAGTCTGGT  
 TTAACCACTTGGGAAAGTATGATGCCAGATGGACATTTGGGGAGGAGAGAATTTGAACTCTCCTTCAG  
 GGTATGGATGTGTGGTGGCAGCTTGGAGATTGTGCCCTGCAGCCGAGTGGGCCATGTCTTCAGGAAGCGG  
 CATCCCTACAACCTCCCTGAAGGCAATGCCCTAACCTATATCAGGAATACAAAGAGGACCCGAGAGGTAT  
 GGATGGACGAGTACAAGCAATACTATTATGAGGCCCGCCCTCGGCCATCGGGAAGGCTTTGGCAGTGT  
 GGCCACACGGATCGAACAGAGGAAGAAGATGGACTGTAAGTCTTCCGCTGGTACCTGGAGAACGCTAT  
 CCCGAGCTCACTGTCCCAGTGAAGGAAGTCTCCCTGGTGTCTTAAGCAAGGAGTCAACTGCTTAGAAT  
 CCCAAGGCCAGAACACAGCTGGTACCTCCTGCTTGAATGGGGATATGCAGAGGGTCTGCCAAGAGCCC  
 TCCACCAGCCCAGGCATGGTTATTTAGTGATCACCTTATCCAGCAGCAGGGGAAATGTCTGGCTGCCACC  
 TCCACCTTAATGTCTTCCCCGGATCCCAGTAGTACTACAATCATGTAACCTAAAGAAGGCAAGCAGA  
 AATGGAGAAGGAAAGGATCTTTCATCCAGCATTGGTCACTGGCCTCTGCCTGGAGACAAAGCCTGCCCA  
 GCTGGTGACAAAACAAATGTCAGGCAGATGCCAGGCCAGCAATGGCAACTGCTGCCACACACA

**ACGCGT**ACGCGGCCGCTCGAGCAGAAACTCATCTCAGAAGAGGATCTGGCAGCAAATGATATCCTGGATT  
 ACAAGGATGACGACGATAAGGTTTAA

**Protein Sequence:**

>RR216911 representing NM\_001100863  
 Red=Cloning site Green=Tags(s)

MRKIRANAIAILTVAWILGTFYYLWQDNRAHAASSGGRGAQRAGGRPEQLREDRTIPLIVTGTPSKGFDE  
 KAYLSAKQLKPGEDPYRQHAFNQLKSDKLSDRPIRDTRHYSCPSLSYSSDLPATSVIITFHNEARSTLL  
 RTVKSVLNRTPAGLIQEIILVDDFSSDPEDCLLLTRIPKVKCLRNDKREGLIRSRVRGADVAGASVLTFL  
 DSHCEVNVWLQPMLQRVMDHTRVVSPIIDVISLDFAYLAASADLRGGFDWSLHFKWEQIPLEQKMT  
 TDPTKPIRTPVIAGGIFVIDKSWFNHLGKYDAQMDIWGGENFELSFRVVMCGGSLEIVPCSRVGHVFRKR  
 HPYNFPEGNALTYIRNTKRTAEVVMDEYKQYYEARPSAIGKAFGSVATRIEQRKKMDCKSFRWYLENVY  
 PELTVPVKEVLPVVIKQGVNCLSQGQNTAGDLLLGMGICRGSASPPPAQAWLFSDDL IQQGGKCLAAT  
 STLMSPPGSPVVLQSCNPKEGKQKWRKGSFIQHSVSGLCLETKPAQLVTNKCQADAQAQQWQLLPHT

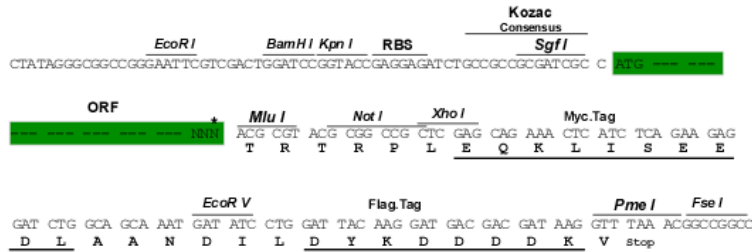
**TR**TRPLEQKLISEEDLAANDILDYKDDDDKV

**Restriction Sites:**

Sgfl-MluI

**Cloning Scheme:**

Cloning sites used for ORF Shutting:



\* The last codon before the Stop codon of the ORF

**ACCN:** NM\_001100863

**ORF Size:** 1674 bp

**OTI Disclaimer:** The molecular sequence of this clone aligns with the gene accession number as a point of reference only. However, individual transcript sequences of the same gene can differ through naturally occurring variations (e.g. polymorphisms), each with its own valid existence. This clone is substantially in agreement with the reference, but a complete review of all prevailing variants is recommended prior to use. [More info](#)

**OTI Annotation:** This clone was engineered to express the complete ORF with an expression tag. Expression varies depending on the nature of the gene.

**Components:** The ORF clone is ion-exchange column purified and shipped in a 2D barcoded Matrix tube containing 10ug of transfection-ready, dried plasmid DNA (reconstitute with 100 ul of water).

**Reconstitution Method:**

1. Centrifuge at 5,000xg for 5min.
2. Carefully open the tube and add 100ul of sterile water to dissolve the DNA.
3. Close the tube and incubate for 10 minutes at room temperature.
4. Briefly vortex the tube and then do a quick spin (less than 5000xg) to concentrate the liquid at the bottom.
5. Store the suspended plasmid at -20°C. The DNA is stable for at least one year from date of shipping when stored at -20°C.

**RefSeq:** [NM\\_001100863.1](#), [NP\\_001094333.1](#)
**RefSeq Size:** 3857 bp

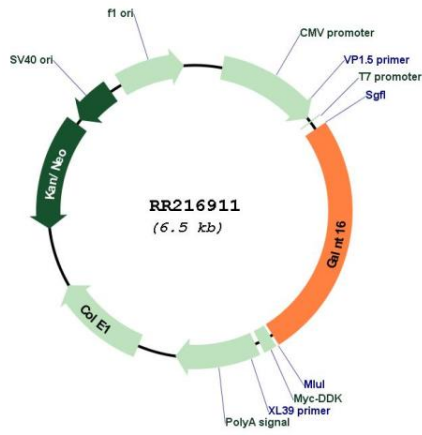
**RefSeq ORF:** 1677 bp

**Locus ID:** 362760

**Cytogenetics:** 6q24

MW: 62.8 kDa

Product images:



Circular map for RR216911