

Product datasheet for **RR216871**

Patz1 (NM_001277215) Rat Tagged ORF Clone

Product data:

Product Type:	Expression Plasmids
Product Name:	Patz1 (NM_001277215) Rat Tagged ORF Clone
Tag:	Myc-DDK
Symbol:	Patz1
Synonyms:	Zfp278; Znf278
Mammalian Cell Selection:	Neomycin
Vector:	pCMV6-Entry (PS100001)
E. coli Selection:	Kanamycin (25 ug/mL)



[View online »](#)

ORF Nucleotide Sequence:

>RR216871 representing NM_001277215
 Red=Cloning site Blue=ORF Green=Tags(s)

TTTTGTAATACGACTCACTATAGGGCGGCCGGGAATTCGTCGACTGGATCCGGTACCGAGGAGATCTGCC
 GCC**GCGATCGCC**

ATGGAGCGGGTCAACGACGCTTCTTGGCGTCCGTCGGGCTGTACACCTACCAGGTGAGCAGACACAGTA
 CGGAGATGCTGCACAACCTGAACCAACAACGCAAAAACGCGGGCGCTTTTTCGACGTGCTCCTACGGGT
 AGCGGATGAGAGCTTCCAGCGCACCGCGCTGTACTGGCTGCCTGCAGCGAGTACTTTGAGTCTGTGTT
 AGCGCCAGTTAGGCGACGGCGGAGCTGCAGACGGTGGTCTGCTGATGTGGGAGCGCGCGGGCGGCTC
 CAGGCGCGGGGCTGGAGGCAGCCGGAACCTGGAGATGCACACCATCAGTTCCAAAGTGTTCGGAGACAT
 CCTGGACTTCGTTACACGTCCCGAATCGTTGTGCGCCTAGAGAGCTTCCCCGAGCTCATGACGGCCGCC
 AAGTTCCTGCTGATGAGGTGGTTCATCGAGATCTGCCAGGAAGTAAACAAACAGTCCAACGTGCAGATCC
 TGGTGGCCCTGCCCGGGCTGATATCATGCTCTTTCGCCCTCCTGGGACTTCTGACTTGGCTTCCCTTT
 GGACATGACCAACGGGGCAGCCATGGCAGCCAACAGTAATGGTATTGCTGGCAGTATGCAGCCCGAGGAA
 GAGGCTGCCAGGGCCACAGGTGCTGCTATTGCGGGCAAGCTTCCTGCCTGTGTACCTGGGGTGGACA
 GATTGCCCATGGTGGCTGGACCTCTATCCCCCAACTACTGACTTCTCCATTCCCCAATGTGGCATCCAG
 TGCACCTCCTCTGACTGGCAAGCGAGGCCGGGGACGCCCCAGGAAGGCCAACCTGCTGGACTCCATGTTT
 GGGTCTCCAGGGGGCTTGGGGAAGCAGGCATCCTTCCATGTGGCCTGTGCGGTAAGGTGTTCACTGACG
 CCAACCGGCTCCGGCAACATGAGGCCAGCAGCGCGTCAACAAGCTCCAGTTGGGCTATATCGATCTTCC
 TCCTCCAAGGCTGGGTGAGAATGGGTTACCCATCTCCGAGGACCCGACGGCCCCAGAAAAGGAGCCGG
 ACCAGGAAGCAGGTGGCTTGTGAGATCTGTGGCAAGATCTTTCGTGACGTATACCATCAACCGGCATA
 AGCTGTCCCACTCTGGGAGAAGCCGTAATCTGTCGCCGTTGTGTGCTGCGGTTCAAGAGAAAAGACCG
 CATGTCTACCATGTGAGGTCCCATGATGGGTCAAGTGGGCAACCGTACATCTGCCAGAGCTGTGGGAAA
 GGCTTCTCCAGGCCAGATCACTTGAATGGACATATCAAGCAGGTGCACACGTCTGAGCGCCCTCACAAAT
 GTCAGGTGTGGGTTGGGAGCAGCAGCGCCTGCCGCCCTGGAACCTTCTCCTAGCGACCTGCCATCATG
 GGACTTTGCCAGCCTGCTTTGTGGAGGTGTCCTTTCAGTTTCTGATACCGCCTTTTCCCTCTCTCTA
 AAAAGTCTTCCAGCCCTTGAACCTGAGTCCAGCACACTCCAGCAATACGCTCTTCTGCTCAGCTC
 CACCAGGATACCTGAGACAGGTTGGACAACCCCTGAGGGCAGCCGGGCTTTTACTCAGTGGCCTGTGGG
 C

ACGCGTACGCGGCCGCTCGAGCAGAAACTCATCTCAGAAGAGGATCTGGCAGCAAATGATATCCTGGATT
 ACAAGGATGACGACGATAAGGTTTAA

Protein Sequence:

>RR216871 representing NM_001277215
 Red=Cloning site Green=Tags(s)

MERVNDASCGPSGCYTYQVSRHSTEMLHNLNQQRKNGGRFCDVLLRVGDESFPAAHRAVLAACSEYFESVF
 SAQLGDGGAADGGPADVGGAAAAAPGGGAGGSRELEMHTISSKVFGLDILDFAYTSRIVVRLESFPELMTAA
 KFLLMRSVIEICQEVIKQSNVQILVPPARADIMLFRPPGTSDLGFPLDMTNGAAMAANSNGIAGSMQPEE
 EAARATGAAIAGQASLPVLPVDRPLPMVAGPLSPQLLTSFPFNVASSAPPLTGKRGRGRPRKANLLDSMF
 GSPGGLREAGILPCGLCGKVFDTANRLRQHEAQHGVTSLQLGYIDLPPRLGENGLPISEDPDGPRKRSR
 TRKQVACEICGKIFRDVYHLNRHKLSHSGEKPYSCPVCGLRFKRKDRMSYHVRSHDGSVGPYICQSCGK
 GFSRPDHLNGHIKQVHTSERPHKCQVWVGSSSGLPPLPLEPLPSDLP SWDF AQPALWRSSHVPDFAFSLSL
 KKSFPALLENLSPAHSNTLFC SAPPGYLRQGWTTPEGSRAFTQWPVG

TRTRPLEQKLISEEDLAANDILDYKDDDDKV

Restriction Sites:

Sgfl-MluI

Cloning Scheme:


ACCN: NM_001277215

ORF Size: 1611 bp

OTI Disclaimer: The molecular sequence of this clone aligns with the gene accession number as a point of reference only. However, individual transcript sequences of the same gene can differ through naturally occurring variations (e.g. polymorphisms), each with its own valid existence. This clone is substantially in agreement with the reference, but a complete review of all prevailing variants is recommended prior to use. [More info](#)

OTI Annotation: This clone was engineered to express the complete ORF with an expression tag. Expression varies depending on the nature of the gene.

Components: The ORF clone is ion-exchange column purified and shipped in a 2D barcoded Matrix tube containing 10ug of transfection-ready, dried plasmid DNA (reconstitute with 100 ul of water).

- Reconstitution Method:**
1. Centrifuge at 5,000xg for 5min.
 2. Carefully open the tube and add 100ul of sterile water to dissolve the DNA.
 3. Close the tube and incubate for 10 minutes at room temperature.
 4. Briefly vortex the tube and then do a quick spin (less than 5000xg) to concentrate the liquid at the bottom.
 5. Store the suspended plasmid at -20°C. The DNA is stable for at least one year from date of shipping when stored at -20°C.

RefSeq: [NM_001277215.1](#), [NP_001264144.1](#)

RefSeq Size: 2285 bp

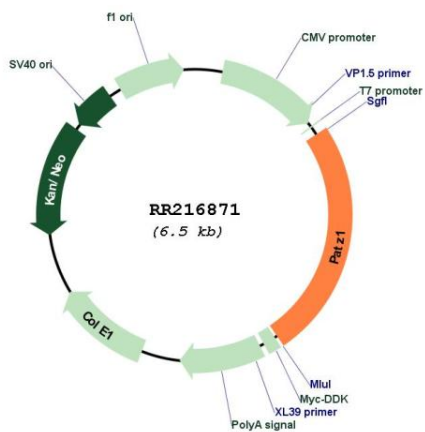
RefSeq ORF: 1614 bp

Locus ID: 305471

Cytogenetics: 14q21

MW: 57.7 kDa

Product images:



Circular map for RR216871