

Product datasheet for **RR216787**

Pltp (NM_001168543) Rat Tagged ORF Clone

Product data:

Product Type:	Expression Plasmids
Product Name:	Pltp (NM_001168543) Rat Tagged ORF Clone
Tag:	Myc-DDK
Symbol:	Pltp
Synonyms:	Bpife
Vector:	pCMV6-Entry (PS100001)
E. coli Selection:	Kanamycin (25 ug/mL)
Cell Selection:	Neomycin



[View online »](#)

ORF Nucleotide Sequence:

>RR216787 representing NM_001168543
 Red=Cloning site Blue=ORF Green=Tags(s)

TTTTGTAATACGACTCACTATAGGGCGGCCGGAATTCGTCGACTGGATCCGGTACCGAGGAGATCTGCC
 GCC**CGGATCGCC**

ATGGCCCTGCTCCCGCCCTCTTCTAGCGCTTCTGGCAGGTGCCACGCCGAGCTCCCGGCTGCAAGA
 TCCGAGTCACCTCTGCGCTCTGGAGCTGGTGAAGCAGGAGGGCTGCGCTTCTGGAGCAAGAGCTGGA
 GGACATCAACATCCCAGATGTGTATGGCGCAAAGGCCACTTCTACTACAATATCTCGGACGTGAAGGTC
 ACACAGCTGCAGTTGATATCCTCCGAGCTCCACTTCCAGCCGGACCAGGACCTGTTGCTGAACATCTCCA
 ATGCGTCTTGGGGCTGCACTTCCGGAGACAGCTCCTCTACTGGTTCTTCTATGATGGGGCTACATCAA
 TGCCTCGGCCGAGGGTGTGTCCATCCGAACAGGTCTGCAGCTCTCCCGGATCCCACTGGTCGGATTA
 GTGTCCAATGTCTCTGCGAGGCCTCTGTGTCTAAAATAAATATGGCCTTCGGGGAAACCTTCAGGAGGA
 TGTATAACTTTTTTCCACGTTCACTTCTGGGATGCGATTCTCCTCAACCAGCAGATCTGCCCTGT
 GCTCCACCATGCTGGGACAGTGTGCTTAACCTCCTGGACACAGTGCCCGTGGTAGTTCTGTGGAT
 GAACCTGTGGGATCGATTATCCCTTCTGAAGGATCCTGTGGTCTCCAACGGCAATCTGGATATGGAAT
 TCCGGGGAGCATTCTCCCTCTCAAGGAGGGCAACTGGAGCCTTCTCAACAAAGCGGTGGAGCCTCAGT
 GGATGACGACGAGAGGATGGTGTACGTGGCCTTCTCTGAGTTCTTCTTGGACTCTGCCATGGAGAGCTAC
 TTCCAAGCTGGAGCGCTGCAGCTGACGCTTGTGGGGACAAGGTGCCAAATGATCTGGACATGCTTCTGA
 GGGCCACTTACTTTGGGAGCATTGTTCTCCAGAGCCCGACAGTGATTAACCTCCCGCTGAAGCTGAAGCT
 ACAGGCCATAAGCTCTCCGCTTGTACCATCAAGCCGTGAGCCAGGACCACCATCTCTGTCCCGCCAGCGTC
 ACCATCTCCTTGGCCCCACCTACAATGCCTGAAGTCGAGCTGTCCAAGATGATCATGGAAGGTCGTCTCA
 GTGCTAAGTTGACACTCAAGGGCAAGGCGCTGCGAGCGAAGCTGGACCTCGAAGGTTTCAAATTTACTC
 CAATCAGTCTGCGCTGGAGTCTCTGGCACTGATCCCACTGCAGGCCCACTGAAGACGCTGCTGCAATC
 GGAGTGATGCCTTTGTTGAATGAGCGTATCTGGCGTGGGGTGCAGATCCCCCTCCCTGAGGGTATCAACT
 TCGTGCATGAGGTGGTGACCAACCATGCAGGCTTCGTCACTGTTGGGGCTGACCTCCACTTTGCCAAAGG
 ACTTCGAGAAGTGATTGACAAGAACCGTTCTGCCGGCGCGCTGACACTGTGGACTCCAGTGTCCCTCCA
 CCCTCTGCTGCAGCTGCC

ACGCGTACGCGGCCGCTCGAGCAGAACTCATCTCAGAAGAGGATCTGGCAGCAATGATATCCTGGATT
 ACAAGGATGACGACGATAAGGTTTAA

Protein Sequence:

>RR216787 representing NM_001168543
 Red=Cloning site Green=Tags(s)

MALLPALFLALLAGAHAE L PGCKIRVTSAALELVKQEGLRFLEQELEDINIPDVYGA KH FYNI SDVKV
 TQLQLISSELHFQPDQDLLLNISNASLGLHFRRQLLYWFFYDGGYINASAEGVSI RTGLQLSRDPTGRIK
 VSNVSC EASVSKINMAFGGTFRRMYNFFSTFITSGMRFLNQQICPVLHHAGTVLLNSLLDTPVPRSSVD
 ELVGDIDYSL LKDPVVSNGNLDMEFRGAFFPLKEGNWSLLNKAVEPQLDDDERMVVYAFSEFFFD SAMESY
 FQAGALQLTLVGDKVPNDLMLLRATYFGSIVLQSPTVINSPLK LKQA ISSPRCTIKPSGTTISVTASV
 TISLAPPTMPEVELSKMIMEGRLSAKLTLKGKALRAKLDLRRFQIYSNQSALESLAL IPLQAPLKTLLQI
 GVMPLLN ER IWRGVQIPLPEGINFVHEVVTNHAGFVTVGADLHFAKGLREVIDKNRSAGGADTVDSVPP
 PSAAAA

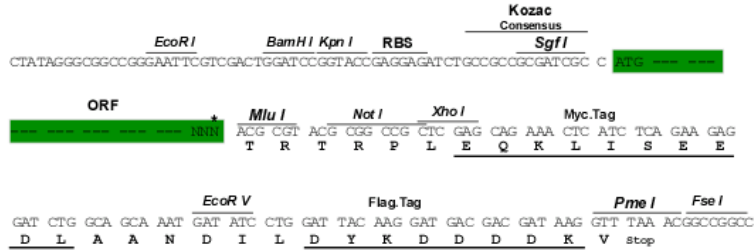
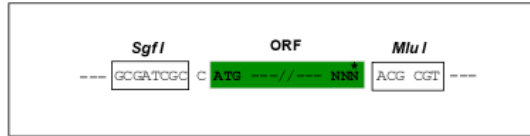
TRTRPLEQKLISEEDLAANDILDYKDDDDKV

Restriction Sites:

Sgfl-Mlul

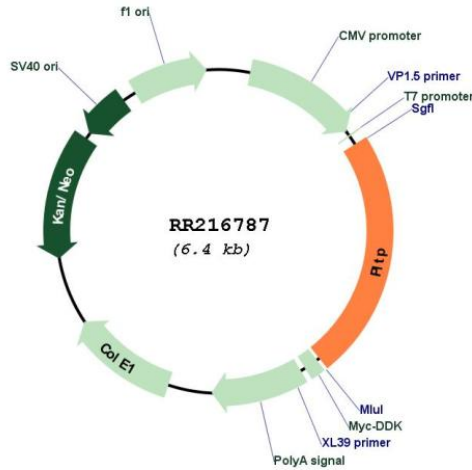
Cloning Scheme:

Cloning sites used for ORF Shutting:



* The last codon before the Stop codon of the ORF

Plasmid Map:



ACCN: NM_001168543

ORF Size: 1488 bp

OTI Disclaimer: The molecular sequence of this clone aligns with the gene accession number as a point of reference only. However, individual transcript sequences of the same gene can differ through naturally occurring variations (e.g. polymorphisms), each with its own valid existence. This clone is substantially in agreement with the reference, but a complete review of all prevailing variants is recommended prior to use. [More info](#)

OTI Annotation: This clone was engineered to express the complete ORF with an expression tag. Expression varies depending on the nature of the gene.

Components: The ORF clone is ion-exchange column purified and shipped in a 2D barcoded Matrix tube containing 10ug of transfection-ready, dried plasmid DNA (reconstitute with 100 ul of water).

Reconstitution Method:

1. Centrifuge at 5,000xg for 5min.
2. Carefully open the tube and add 100ul of sterile water to dissolve the DNA.
3. Close the tube and incubate for 10 minutes at room temperature.
4. Briefly vortex the tube and then do a quick spin (less than 5000xg) to concentrate the liquid at the bottom.
5. Store the suspended plasmid at -20°C. The DNA is stable for at least one year from date of shipping when stored at -20°C.

RefSeq: [NM_001168543.1](#), [NP_001162015.1](#)

RefSeq Size: 2025 bp

RefSeq ORF: 1491 bp

Locus ID: 296371

Cytogenetics: 3q42

MW: 54.5 kDa