

## Product datasheet for **RR216786**

### Adcyap1r1 (NM\_001270580) Rat Tagged ORF Clone

#### Product data:

Product Type:	Expression Plasmids
Product Name:	Adcyap1r1 (NM_001270580) Rat Tagged ORF Clone
Tag:	Myc-DDK
Symbol:	Adcyap1r1
Synonyms:	PAC1-R; PACAP-R1; PACAP-R1A; PACAPR1; PACAPR1A
Vector:	pCMV6-Entry (PS100001)
E. coli Selection:	Kanamycin (25 ug/mL)
Cell Selection:	Neomycin



[View online »](#)

**ORF Nucleotide Sequence:**

>RR216786 representing NM\_001270580  
 Red=Cloning site Blue=ORF Green=Tags(s)

TTTTGTAATACGACTCACTATAGGGCGGCCGGAATTCGTCGACTGGATCCGGTACCGAGGAGATCTGCC  
 GCC**GCGATCGCC**

ATGGCCAGAGTCTCTGAGCTCTCCCTGACTGCTCTCTGCTGCCTGTGGCTATTGCTATGCACTCTGACT  
 GCATCTTCAAGAAGGAGCAAGCCATGTGCCTGGAGAGGATCCAGAGGGCCAACGACCTGATGGGACTAAA  
 CGAGTCTTCCCCAGGTTGCCCTGGCATGTGGGACAATATCACATGTTGGAAGCCAGCTCAAGTAGGTGAG  
 ATGGTCTTGTAAAGCTGCCCTGAGGTCTTCCGGATCTTCAACCCGGACCAAGTCTGGATGACAGAAACCA  
 TAGGAGATTCTGGTTTTGCCGATAGTAATTCCTTGAGATCACAGACATGGGGTCTGGGCCGGAAGTCT  
 CACAGAGGACGGCTGGTCCGAGCCCTCCCCACTACTTCGATGCTTGTGGGTTTGTGATTATGAGCCT  
 GAGTCTGGAGATCAGGATTACTACTGTCCGTGAAGGCTCTACACAGTCCGCTACAGCACTTCCC  
 TCGCCACCCTCACTACTGCCATGGTCATCTTGTCCGCTTCCGGAAGCTGCATTGCACTCGCAACTTCAT  
 CCACATGAACCTGTTGTATCCTTCATGCTGAGGGCTATCTCCGCTTTCATCAAGGACTGGATCTGTAC  
 GCCGAGCAGGACAGCAGTCACTGCTTCGTTCCACCGTGGAGTGCAAAGCTGTATGGTTTTCTCCACT  
 ACTGCGTGGTGTCCAACACTTCTGGCTGTTTCATTGAAGGCTGTACCTCTTACACTGCTGGTGGAGAC  
 CTTCTCCCTGAGAGGAGATATTTCTACTGGTACACCATCATCGGCTGGGGGACCACTACTGTGTGTGTA  
 ACAGTGTGGGCTGTGCTGAGGCTCTATTTTGTATGATGCAGGATGCTGGGATATGAATGACAGCACAGCTC  
 TGTGGTGGGTGATCAAAGGCCCGTGGTGGCTCTATAATGGTAACTTTGTGCTTTTTCATCGGCATCAT  
 CATCATCTTGTACAGAAGCTGCAGTCCCAGACATGGGAGGCAACGAGTCCAGCATCTACTTAACAAAT  
 TTAAGACTGAGAGTCCCCAAGAAAACCCGAGAGGACCCCTGCCTGTGCCCTCAGACCAGCATTACCCCC  
 CTTTCTACGGCTGGCCCGCTCCACCCTACTGCTCATCCCCTCTCGGAATCCACTACACAGTATTCGC  
 CTTCTCTCCAGAGAACGTACGAAGAGGAAAGACTTGTGTTTGTAGCTTGGGCTGGCTCCTTCCAGGGC  
 TTTGTGGTGGCTGTACTCTACTGCTTCTGAATGGGAGGTACAGGCAGAGATTAAGAGGAAATGGAGGA  
 GCTGGAAGGTGAACCGTTACTTCACTATGGACTTCAAGCACCGGCACCCGCTCCCTGGCCAGCAGTGGAGT  
 AAATGGGGAAACCCAGCTGTCCATCCTGAGCAAGAGCAGTCCCAGCTCCGCATGTCCAGCTCCCGGCC  
 GACAACTTGGCCACC

**ACGCGT**ACGCGGCCGCTCGAGCAGAAACTCATCTCAGAAGAGGATCTGGCAGCAAATGATATCCTGGATT  
 ACAAGGATGACGACGATAAGGTTTAA

**Protein Sequence:**

>RR216786 representing NM\_001270580  
 Red=Cloning site Green=Tags(s)

MARVLQLSLTALLLPVAIAMHSDCIFKKEQAMCLERIQRANDLMGLNESSPGCPGMWDNITCWKPAQVGE  
 MVLVSCPEVFRIFNPDQVWMTETIGDSGFADSNLEITDMGVVGRNCTEDGWSEPFPHYFDACGFDDYEP  
 ESGDQDYIYLVKALYTVGYSTSLATLTTAMVILCRFRKLHCTRNFIMHNLVVSFMLRAISVFIKWILY  
 AEQDSSHCFVSTVECKAVMVFFHYCVVSNYFWLFI EGLYLFLLVETFFPERRYFYWYTIIGWGTPTVCV  
 TVWAVLRLYFDDAGCWDMDSTALWWWIKGPVVGSI MVNFVLF IGIIILVQKLQSPDMGNESSIYLTN  
 LRLRVPKKTREDPLPVPSDQHSPPFLRLARSTLLLIPLFGIHYTVFAFSPENVSKRERLVFELGLGSFQG  
 FVVAVLYCFLNGEVQAEIKRKWRSWKVNRYFTMDFKHRHPSLASSGVNGGTQLSILSKSSSQLRMSLPA  
 DNLAT

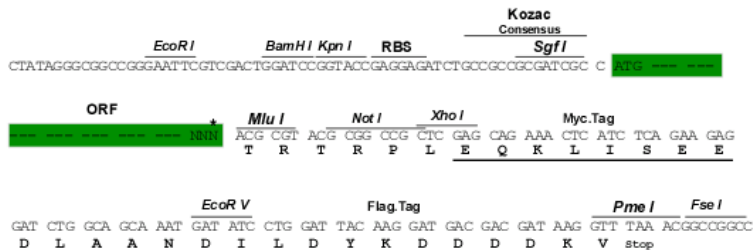
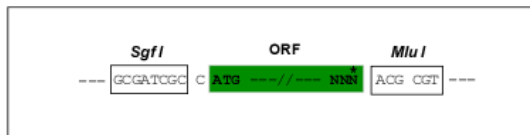
**TR**TRPLEQKLISEEDLAANDILDYKDDDDKV

**Restriction Sites:**

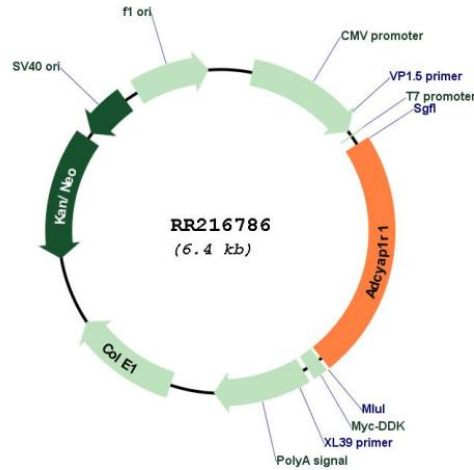
SgfI-MluI

Cloning Scheme:

Cloning sites used for ORF Shutting:



\* The last codon before the Stop codon of the ORF

**Plasmid Map:**


**ACCN:** NM\_001270580

**ORF Size:** 1485 bp

**OTI Disclaimer:** The molecular sequence of this clone aligns with the gene accession number as a point of reference only. However, individual transcript sequences of the same gene can differ through naturally occurring variations (e.g. polymorphisms), each with its own valid existence. This clone is substantially in agreement with the reference, but a complete review of all prevailing variants is recommended prior to use. [More info](#)

**OTI Annotation:** This clone was engineered to express the complete ORF with an expression tag. Expression varies depending on the nature of the gene.

**Components:** The ORF clone is ion-exchange column purified and shipped in a 2D barcoded Matrix tube containing 10ug of transfection-ready, dried plasmid DNA (reconstitute with 100 ul of water).

**Reconstitution Method:**

1. Centrifuge at 5,000xg for 5min.
2. Carefully open the tube and add 100ul of sterile water to dissolve the DNA.
3. Close the tube and incubate for 10 minutes at room temperature.
4. Briefly vortex the tube and then do a quick spin (less than 5000xg) to concentrate the liquid at the bottom.
5. Store the suspended plasmid at -20°C. The DNA is stable for at least one year from date of shipping when stored at -20°C.

**RefSeq:** [NM\\_001270580.1](#), [NP\\_001257509.1](#)

**RefSeq Size:** 6235 bp

**RefSeq ORF:** 1488 bp

**Locus ID:** 24167

**UniProt ID:** [P32215](#)

**Cytogenetics:** 4q24

**MW:** 56.5 kDa

**Gene Summary:** regulates neural precursor proliferation; mediates inhibitory signaling for Shh-induced cerebellar granule precursor cell proliferation [RGD, Feb 2006]