

Product datasheet for **RR216686**

Serpina5 (NM_001244739) Rat Tagged ORF Clone

Product data:

Product Type:	Expression Plasmids
Product Name:	Serpina5 (NM_001244739) Rat Tagged ORF Clone
Tag:	Myc-DDK
Symbol:	Serpina5
Synonyms:	Pci
Vector:	pCMV6-Entry (PS100001)
E. coli Selection:	Kanamycin (25 ug/mL)
Cell Selection:	Neomycin
ORF Nucleotide Sequence:	>RR216686 representing NM_001244739 Red=Cloning site Blue=ORF Green=Tags(s)

TTTTGTAATACGACTCACTATAGGGCGCCGGGAATTCGTCGACTGGATCCGGTACCGAGGAGATCTGCC
GCC**CGGATCGCC**

ATGACATTTGCCAGCTATAATTCCTCTGTCTCTCTCTCTCATAAGCCAGGTGGATTGCTACCCATCA
AGACTCAGCCACCACAATACAGAAATGGCAGCCACAATGAGGTTCTTCCCATCTGTGCTGGTGCT
GTTCTTACGTACGGGGTGGCTTCCCGCAACGCTCCATTCTAAGGAGAAGAAGAAGTCTAAAGAGTCC
TCTGTGGGTGCTGTGGGACTTCCCGAAGCAGAGACTTTGCCTTACGGCTCTACAGGGCCTTGGCTCTG
AAGCCCTGGTCAGAATGTTTTCTTCTCCCATGAGCGTGTCTATGAGCTTGGGTATGCTCTCCCTGGG
GTCAGGCTTGAAGACTAAGGCACAGATCCTGGAGGGCCTGGGCCTCAGCCTCCAGCAAGGCCAAGAGGAT
ATGCTCCACAAGGGCTTCCAACAGCTGTGCAGCAGTTCAGCCAGCCTAGTGATGGCCTCCAGCTGAGCC
TAGGCAGTGCCCTTTTACAGACCCAGCAGTACATATCCGGGACCACTTCTGAGTGCCATGAAGACATT
GTACATGTCAGACATGTTCTCTACCAACTTTGGGAACCTGAAAGTGCTAAGAAGCAGATCAATGACTAT
GTAGCCAAGAAGACCAACGGCAAGATTGTAGACTTGATCAAGGATCTTGACAGCACCCACGTCATGGTGG
TGGTAAATTATCTTCTTCAAAGCCAAGTGGCAGACGGCCTTCAAGTACCAACACCCACAAGATGGA
TTACCATGTGACTCCAAGAAGACATTACAGGTGCAATGATGAACCGGAAGATATATATTCTACATC
CTCGACCAAAAACATTTCTGCACGGTGGTGGGATCCCTTACCAAGGCAATACATTTGCTCTGTTTATTC
TTCCAGCGAGGGCAAGATGAAGCGGTAGAGGATGGCCTGGATGAGAGAACGTTGAGGAACTGGCTTAA
GATGTTACAAAGAGACAGTTAGATCTTACCTCCCAAGTCTCCATTGAGGGTACCTATAAACTGGAA
AAAATCTCCCAAGCTGGGCATCCAGGACATCTTACCACCCATGCTGACTTGCTGGCCTTACTGACC
ACACCAATATTAAGTTGTCTGAGATGGTACACAAATCCATGGTGGAGGTAGACGAGTCAGGAACAACAGC
AGCTGCCTCCACAGGAATTCTTTCACACTCAGATCTGCTCGACCAGCTCTCTGAAGGTAGAATTCACC
AGACCTTTCTGGTGGTCATTATGGATGGTACAAACCTCTATTTTCATTGGCAAAGTGATTACGCC

ACGCGTACGCGGCCGCTCGAGCAGAAACTCATCTCAGAAGAGGATCTGGCAGCAAATGATATCCTGGATT
ACAAGGATGACGACGATAAGGTTTAA



[View online »](#)

Protein Sequence: >RR216686 representing NM_001244739
 Red=Cloning site Green=Tags(s)

MTFASYNLCP LSSHKPGLLPIKTL SHHNT EMAATMRFFPILCLV LFFSHGVASRQRSHSKEKKKSKES
 SVGAVGTSRSRDFAFRL YRALASEAPGQNVFFSPMSVSMSL GMLSLGSLKTKAQILEGLGLSLQGGQED
 MLHKGFQQLLQF SQPSDGLQLSLGSALFTDPAVHIRDHFLSAMKTL YMSDMFSTNFGNPESAKKQINDY
 VAKKTNGKIVDLIKDL DSTHVMVVVNYIFFKAKWQTAFSSNTNTHKMDYHVTPKKTIQVPMNREDIYSYI
 LDQNISCTVVGIPYQNTFALFILPSEGKMKRVEDGLDERTLRNWLKMFTRQLDLYL PKFSIEGTYKLE
 KILPKLGIQDIFTTHADLSGLDHTNIKLSMVHKSMVEVDESGTTAAASTGILFTLRSARPSSLKVEFT
 RPFLVVIMDGTNLYFIGVIQP

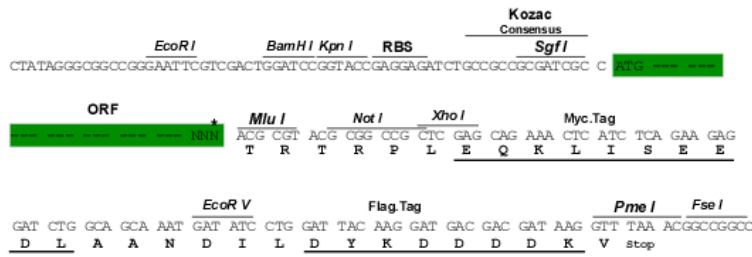
TRTRPLEQKLISEEDLAANDILDYKDDDDKV

Restriction Sites:

SgfI-MluI

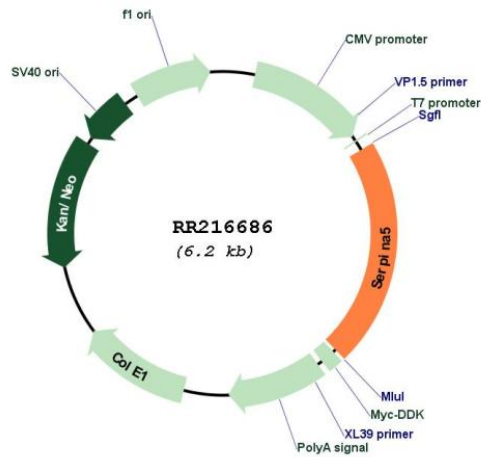
Cloning Scheme:

Cloning sites used for ORF Shuttling:



* The last codon before the Stop codon of the ORF

Plasmid Map:



ACCN: NM_001244739

ORF Size:	1326 bp
OTI Disclaimer:	The molecular sequence of this clone aligns with the gene accession number as a point of reference only. However, individual transcript sequences of the same gene can differ through naturally occurring variations (e.g. polymorphisms), each with its own valid existence. This clone is substantially in agreement with the reference, but a complete review of all prevailing variants is recommended prior to use. More info
OTI Annotation:	This clone was engineered to express the complete ORF with an expression tag. Expression varies depending on the nature of the gene.
Components:	The ORF clone is ion-exchange column purified and shipped in a 2D barcoded Matrix tube containing 10ug of transfection-ready, dried plasmid DNA (reconstitute with 100 ul of water).
Reconstitution Method:	<ol style="list-style-type: none">1. Centrifuge at 5,000xg for 5min.2. Carefully open the tube and add 100ul of sterile water to dissolve the DNA.3. Close the tube and incubate for 10 minutes at room temperature.4. Briefly vortex the tube and then do a quick spin (less than 5000xg) to concentrate the liquid at the bottom.5. Store the suspended plasmid at -20°C. The DNA is stable for at least one year from date of shipping when stored at -20°C.
RefSeq:	NM_001244739.1 , NP_001231668.1
RefSeq Size:	2130 bp
RefSeq ORF:	1329 bp
Locus ID:	65051
Cytogenetics:	6q32
MW:	49.4 kDa
Gene Summary:	inhibits activated serine protease protein C in the anticoagulant protein C pathway; may play a role in reproduction [RGD, Feb 2006]