

Product datasheet for **RR216647**

Rnf128 (NM_001173349) Rat Tagged ORF Clone

Product data:

Product Type: Expression Plasmids
 Product Name: Rnf128 (NM_001173349) Rat Tagged ORF Clone
 Tag: Myc-DDK
 Symbol: Rnf128
 Synonyms: RGD1566282
 Vector: pCMV6-Entry (PS100001)
 E. coli Selection: Kanamycin (25 ug/mL)
 Cell Selection: Neomycin
 ORF Nucleotide Sequence: >RR216647 representing NM_001173349
 Red=Cloning site Blue=ORF Green=Tags(s)

TTTTGTAATACGACTCACTATAGGGCGGCCGGAATTCGTCGACTGGATCCGGTACCGAGGAGATCTGCC
 GCC**CGGATCGCC**

ATGGGGCCGCCTCCCGGGATCGGGTCTACTGCCGCGCGGCTGCGGAGCTGCCGGCTGCTGGCTTGGT
 GCTTCCTCTAGCTCTGAGTCCGCACGCGCCCGTTCCCGGGAGCCGAAGCTGTGTGGACCGCTACCT
 CAACGTGTCTGGCGGGTCCGCACCCCGAGTGAACCGCACGGTGTGGGAGCTGAGCGAGGAGGGCGTG
 TACGGCCAGGACTCGCCGCTGGAGCCCGTCTCCGGGGTCTTGGTACCGCCGACGGGCCCGGGCGCTCA
 ACGCCTGTAACCCGCACACCAATTTACCGTGCCCACTGTTGGGGGAGCACGGTGCAAGTATCTTGGTT
 GGCCCTCATCCAACGCGCGGAGGCTGCACCTTCGCGACAAGATCCATCTGGCTTATGAGAGAGGGCT
 TCTGGAGCCGTCACTTTAACTTCCCGGGACCCGCAATGAGGTCATTCCCATGTCTCACCCGGGTGCAG
 GAGACATTGTTGCGATCATGATTGGCAATCTGAAAGGAACAAAAATCTACAGTCCATTCAAAGAGGCAT
 CCAAGTAACAATGGTCATCGAAGTAGGCAAAAAACATGGCCCTGGGTGAATCATTATTTCAATTTCTTC
 GTTCCGTGTCTTTTTATTATTACAGCAGCAACTGTGGGCTATTTTATCTTTTACTGCTCGAAGAT
 TACGGAATGCAAGAGCTCAAAGTAGGAAGCAGAGGCAGTTAAAGGCAGATGCTAAAAAGCTATTGGCAG
 GCTTCAGCTGCGCACCTTGAACAAGGAGACAAGGAAATTTGGCCCTGATGGAGATAGCTGTGCTGTGTGC
 ATCGAGCTCTATAAGCCCAATGATGTGGTGCGCATCCTAACCTGCAATCATATTTTCCATAAGACGTGTG
 TGGACCCATGGCTTTTAGAGCACAGGACTTGCCCATGTGCAAGTGTGACATTCTCAAAGCTCTGGGAAT
 TGAGGTGGATGTTGAGGATGGATCAGTGTCTTTACAAGTCTCTGTTTCTAATGAAGCATCTAATACTGCC
 TCTCCCCACGAAGAGGACAACCGCAGTGAGACTGCTTCATCTGGATATGCTTCAGTACAGGGAGCAGATG
 AGCCACCTCTGGAGGAGCATGCGCAATCAGCAAATGAAAATCTACAGCTGGTCAACCATGAAGCAAATTC
 TGTGGCTGTGGATGTTGTTCCCATGTTGACAACCAACCTTTGAGGAAGATGAAACTCCTGATCAAGAG
 ATGGCTGTCGAGAAGTTAAATCC

ACGCGTACGCGGCCGCTCGAGCAGAAACTCATCTCAGAAGAGGATCTGGCAGCAAATGATATCCTGGATT
 ACAAGGATGACGACGATAAGGTTTAA



[View online >](#)

Protein Sequence: >RR216647 representing NM_001173349
 Red=Cloning site Green=Tags(s)

MGPPPGIGVYCRGGCGAARLLAWCFLLALSPHAPGSRGAEAVWTAAYLNVSWRVPHPGVNRTVWELSEEGV
 YGQDSPLEPVSGVLVPPDGPALNACNPHTNFTVPTVWGSTVQVSWLALIQRGGGCTFADKIHLAYERGA
 SGAVIFNFPGTRNEVIPMSHPGAGDIVAIMIGNLKGTKILQSIQRGIQVTMVEVGGKKGHPWVNHYSIFF
 VSVSFFIITAATVGYFIFYSARRLRNARAQSRKQRQLKADAKKAIQRLQLRTLKQDKEIGPDGDSCAVC
 IELYKPNVDVVRILT CNHIFHKTCVDPWLEHRTCPMCKCDILKALGIEVDVEDGSVSLQVPVSNEASNTA
 SPHEEDNRSETASSGYASVQGADEPPLEEAQSANENLQLVNHEANSVAVDVVPVHDNPTFEEDETPDQE
 MAVREVKV

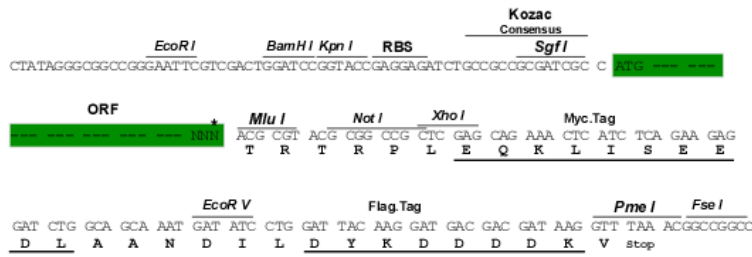
TRTRPLEQKLISEEDLAANDILDYKDDDDKV

Restriction Sites:

SgfI-MluI

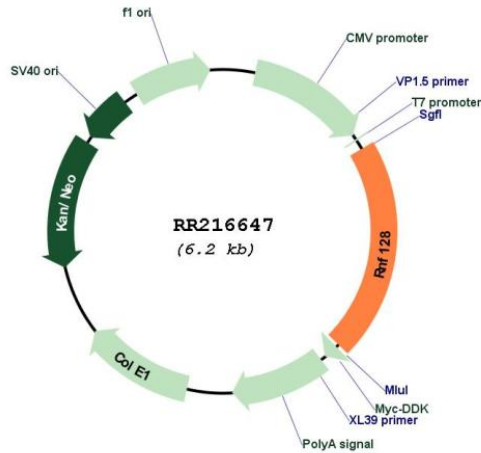
Cloning Scheme:

Cloning sites used for ORF Shuttling:



* The last codon before the Stop codon of the ORF

Plasmid Map:



ACCN:

NM_001173349

ORF Size:	1284 bp
OTI Disclaimer:	The molecular sequence of this clone aligns with the gene accession number as a point of reference only. However, individual transcript sequences of the same gene can differ through naturally occurring variations (e.g. polymorphisms), each with its own valid existence. This clone is substantially in agreement with the reference, but a complete review of all prevailing variants is recommended prior to use. More info
OTI Annotation:	This clone was engineered to express the complete ORF with an expression tag. Expression varies depending on the nature of the gene.
Components:	The ORF clone is ion-exchange column purified and shipped in a 2D barcoded Matrix tube containing 10ug of transfection-ready, dried plasmid DNA (reconstitute with 100 ul of water).
Reconstitution Method:	<ol style="list-style-type: none">1. Centrifuge at 5,000xg for 5min.2. Carefully open the tube and add 100ul of sterile water to dissolve the DNA.3. Close the tube and incubate for 10 minutes at room temperature.4. Briefly vortex the tube and then do a quick spin (less than 5000xg) to concentrate the liquid at the bottom.5. Store the suspended plasmid at -20°C. The DNA is stable for at least one year from date of shipping when stored at -20°C.
RefSeq:	NM_001173349.1 , NP_001166820.1
RefSeq Size:	1825 bp
RefSeq ORF:	1287 bp
Locus ID:	315911
Cytogenetics:	Xq32
MW:	46.4 kDa