

Product datasheet for RR216646

Fbxl3 (NM_001100568) Rat Tagged ORF Clone

Product data:

Product Type: Expression Plasmids
Product Name: Fbxl3 (NM_001100568) Rat Tagged ORF Clone
Tag: Myc-DDK
Symbol: Fbxl3
Synonyms: Fbxl3a
Vector: pCMV6-Entry (PS100001)
E. coli Selection: Kanamycin (25 ug/mL)
Cell Selection: Neomycin
ORF Nucleotide Sequence: >RR216646 representing NM_001100568
Red=Cloning site Blue=ORF Green=Tags(s)

TTTTGTAATACGACTCACTATAGGGCGCCGGGAATTCGTCGACTGGATCCGGTACCGAGGAGATCTGCC
GCC**CGGATCGCC**

ATGAAACGAGGAGGAAGAGATAGTGACCAGGACTCACCTGAGGAAGGCACTGCTGAGAAGCCTAAGAAAC
CAAGGACAACACATGAGTGCTCGCAGCCTTGTGACTGGGGTAACCTTCTTCAGGACATTGCTCCACGT
TTTTAAGTATTTGCCTCTTCTTGACCGGCTCATGCTTCTCAAGTGTGCCGAATTGGAATCAGGTATTT
CACATGCCTGACTTGTGGCGATGTTTTGAATTTGAACTGAATCAGCCAGCTACATCTTACTTGAAAGCTA
CACATCCAGAGCTGATCAAACAGATTATTAAGAGGCATTCGAATCATCTGCAGTATGTCAGCTTCAAGGT
GGACAGCAGCAAAGAATCCGCTGAAGCAGCTTGTGATATATTATCGCAGCTTGTGAATTGCTTTAAAA
ACGCTTGGACTTATTTCAACTGCTCGGCCAAGCTTTATGGATCTACCAAAGTCTCACTTTATCTCTGCAC
TGACAGTTGTGTTGTAAACTCCAAATCCCTGCCTCACTTAAGATAGACGACACCCAGTAGATGACCC
ATCCCTTAAAGTCCTAGTGGCCAACAACAGTGACACACTCAAGCTGCTGAAAATGAGCAGCTGCCTCAT
GTCTCTCCAGCAGGATTCTGTGTGGCTGATCAGTGCATGGCTTACGGGAGCTGGCCCTGAATACC
ATTTGCTCAGTGATGAGCTGTTGCTCGCACTGTCTTCTGAAAAGCACGTTCTGCTTAGAACATTTGCGCAT
TGATGTTGTCAAGTGAACCCGGGACAGACACTTCCACACGATCCAGAAGAGCAGCTGGGACGCCTTC
ATCAAGCACTCACGAAGGTCAACCTAGTGATGATTTTTTCTGTACGAAGAGGAGTTTGACCCGTTCT
TCCGTTATGAAATCCCTGCCACTCATCTTTACTTTGGGAGATCAGTCAGCAAAGATGTGCTTGGCCGCGT
GGGCATGACCTGCCCCAGACTAGTAGAACTGGTAGTGTGTGCCAATGGCTTGGCGCCCTTGATGAAGAG
TTGATTGCATTGCAGAACGTTGCAAAAATCTGTCAGCTATTGGGCTGGGGAGTGTGAGGTCTCATGTA
GTGCCCTTGTGAGTTTGTAAAGATGTGTGGGGCCGCTGTCTCAGTTATCCATTATGGAAGAAGTGT
AATTCCTGACCAGAAGTATAGTTTGAACAGATTCATTGGGAAGTGTCCAAGCATCTTGGCAGGGTGTGG
TTCCAGACATGATGCCTACGTGG

ACGCGTACGCGGGCCGCTCGAGCAGAAACTCATCTCAGAAGAGGATCTGGCAGCAAATGATATCCTGGATT
ACAAGGATGACGACGATAAGGTTTAA



[View online »](#)

Protein Sequence: >RR216646 representing NM_001100568
 Red=Cloning site Green=Tags(s)

MKRGGGRSDQDSPEEGTAEKPKKPRTTHECSQPCDWGNLLQDIVLHVFKYLPLLDRAHASQVCRNWNQVF
 HMPDLWRCFEFELNQPATSYLKATHPELIKQIIKRHSNHLQYVSFKVDSSKESAEACDILSQLVNCCLK
 TLGLISTARPSFMDLPKSHFISALTVVVFVNSKLSLSSKIDDTVPDDPSLKVLVANNSDTLKLKMSSCP
 VSPAGILCVADQCHGLRELALNYHLLSDELLLALSSEKHVRLHLRIDVVSSENPGQTHFHTIQKSSWDAF
 IKHSPKVNLMYFFLYEEEFDPFFRYEIPATHLYFGRSVSKDVLGRVGMTCPRLVELVVCANGLRPLDEE
 LIRIAERCKNLSAIGLGECEVSCSAFVEFVKMCGGRLSQLSIMEEVLIPDQKYSLEQIHWEVSKHLGRV
 FPDMMPTW

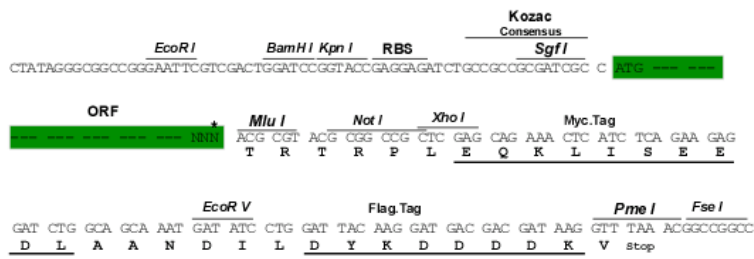
TRTRP**LEQKLISEEDLA**NDILDYKDDDDK**V**

Restriction Sites:

SgfI-MluI

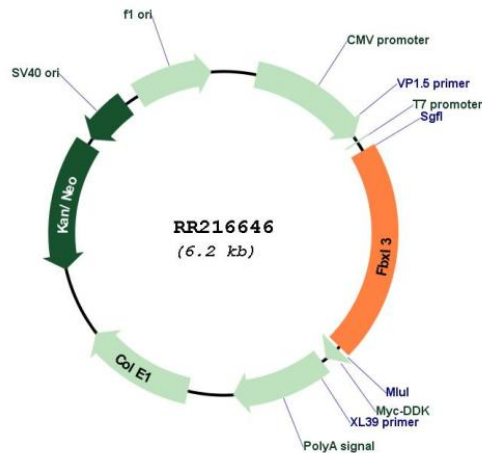
Cloning Scheme:

Cloning sites used for ORF Shuttling:



* The last codon before the Stop codon of the ORF

Plasmid Map:



ACCN:

NM_001100568

ORF Size:	1284 bp
OTI Disclaimer:	The molecular sequence of this clone aligns with the gene accession number as a point of reference only. However, individual transcript sequences of the same gene can differ through naturally occurring variations (e.g. polymorphisms), each with its own valid existence. This clone is substantially in agreement with the reference, but a complete review of all prevailing variants is recommended prior to use. More info
OTI Annotation:	This clone was engineered to express the complete ORF with an expression tag. Expression varies depending on the nature of the gene.
Components:	The ORF clone is ion-exchange column purified and shipped in a 2D barcoded Matrix tube containing 10ug of transfection-ready, dried plasmid DNA (reconstitute with 100 ul of water).
Reconstitution Method:	<ol style="list-style-type: none">1. Centrifuge at 5,000xg for 5min.2. Carefully open the tube and add 100ul of sterile water to dissolve the DNA.3. Close the tube and incubate for 10 minutes at room temperature.4. Briefly vortex the tube and then do a quick spin (less than 5000xg) to concentrate the liquid at the bottom.5. Store the suspended plasmid at -20°C. The DNA is stable for at least one year from date of shipping when stored at -20°C.
RefSeq:	NM_001100568.1 , NP_001094038.1
RefSeq Size:	3301 bp
RefSeq ORF:	1287 bp
Locus ID:	306129
Cytogenetics:	15q23
MW:	48.6 kDa