

Product datasheet for **RR216640**

Ceacam16 (NM_001169579) Rat Tagged ORF Clone

Product data:

Product Type:	Expression Plasmids
Product Name:	Ceacam16 (NM_001169579) Rat Tagged ORF Clone
Tag:	Myc-DDK
Symbol:	Ceacam16
Synonyms:	Bcl3
Vector:	pCMV6-Entry (PS100001)
E. coli Selection:	Kanamycin (25 ug/mL)
Cell Selection:	Neomycin
ORF Nucleotide Sequence:	>RR216640 representing NM_001169579 Red=Cloning site Blue=ORF Green=Tags(s)

TTTTGTAATACGACTCACTATAGGGCGCCGGAATTCGTCGACTGGATCCGGTACCGAGGAGATCTGCC
GCC**CGATCGCC**

ATGAAATGCCATTGACCTGGGGCAGCTGGTTCCTCCTCAGTGCCTGGATCCTGAACGCCGGGGCTGAGA
TCTCCATACCCCCGAGCCTGCTCAACCTGCAGAGGGGACAATGTCACGTTGGTAGTCCATGGGCTTTC
TGGGAACTGCTTGCCTACAATTGGTATGCAGGGCCTTCGATCAGCCTTACCTTCTGGTGGCCAGTTAC
ATTGTCAGCACTGGTGATGAGACCCCTGGACCAGCCACACAGGGCGGGAAGCTGTGCGTCCCGATGGCA
GCCTTGATATCCATGGTGCCCTACCTGGGCACACAGGCACCTACATCCTGCAAACCTGAACAGGCACTT
TCAGACGGAGGTGGGCTACGGACACATGCAGGTCTATGAGATCCTGGCCCTCCCACGGTCATGGCCAAC
GACTGCGCTGGTGGAGCGTAGGGATACCCCTCGTCTCATCTGTAGCAGCCCCAGCCCCGCTGAGGTCC
GCTGGTCTTCAATGGTGACGCTCTGCCCGTGGTGTCCGCTTGGGCTGTCCCCGTGATGGCAGGATGCT
GACCCGGCATGGCGTCCGAGGGAGGAGGCAGGCGCCTACCAGTGTGAGGTGTGGAACCCGGTCAGCGTC
AGCCGAGCGAGCCGCTGAACCTGACGGTATACTTCGGCCCTGAACGAGTGGCTATCCTCCAAGATTCTA
CCACCCGACAGGCTGCACTATTAAGTGGACTTCAACACGTCCTCACCTGTGGTGTGTGTCGCCGCT
CTGCCCTGAGCCAGAGTATGTGGGCCTTCAATGGGAAGGCCTTGAAGAATGGTCAGGATCACCTGAAC
ATCAGCTCCATGAGTGCAGACCAGGGCACGTACACGTGCATTGCTAAGAACCTCCAAGACGCTGCTGT
CTGGCTCTGCCTCAGTGGTGGTAAAGCTGTCTGCCGACGCTGTAGCCATGATGATTGTCCCTGTACCAAC
TAAGCCAATGGAAGGTGAGGACGTGACCCCTGACTGTCCAGGGCTACCCCAAGGACCTGCTAGTCTACGCC
TGGTACCGTGGACCTGCCTCAGAACCAACCGACTGCTAAGCCAGCTGCCATCAGGAACTGGATCGCCG
GCCAGCGCACACAGGCCGGGAGGTGGGCTTTGCCAATTGCTCACTGCTGGTGCAAAGCTGAACCTCAC
GGATGCCGACGCTACACTCAAGACCGTCACACTGCAGGGCAAGACCGACACTCTGGAGTGGAGCTA
CAGGTGGCCCCCTGGAG

ACGCGTACGCGGCCGCTCGAGCAGAACTCATCTCAGAAGAGGATCTGGCAGCAAATGATATCCTGGATT
ACAAGGATGACGACGATAAGGTTAA



[View online »](#)

Protein Sequence: >RR216640 representing NM_001169579
 Red=Cloning site Green=Tags(s)

MK MPL TWG SW FLL SA WIL NAG AE I S I T P E P A Q P A E G D N V L V V H G L S G E L L A Y N W Y A G P S I S L T F L V A S Y
 I V S T G D E T P G P A H T G R E A V R P D G S L D I H G A L P G H T G T Y I L Q T L N R Q F Q T E V G Y G H M Q V Y E I L A P P T V M A N
 D T A L V E R R D T L R L I C S S P S P A E V R W F F N G D A L P V A V R L G L S P D G R M L T R H G V R R E E A G A Y Q C E V W N P V S V
 S R S E P L N L T V Y F G P E R V A I L Q D S T T R T G C T I K V D F N T S L T L W C V S R S C P E P E Y V W A F N G K A L K N G Q D H L N
 I S S M S A D H E G T Y T C I A K N S K T L L S G S A S V V V K L S A A A V A M M I V P V P T K P M E G Q D V T L T V Q G Y P K D L L V Y A
 W Y R G P A S E P N R L L S Q L P S G N W I A G P A H T G R E V G F A N C S L L V Q K L N L T D A G R Y T L K T V T L Q G K T D T L E V L
 Q V A P L E

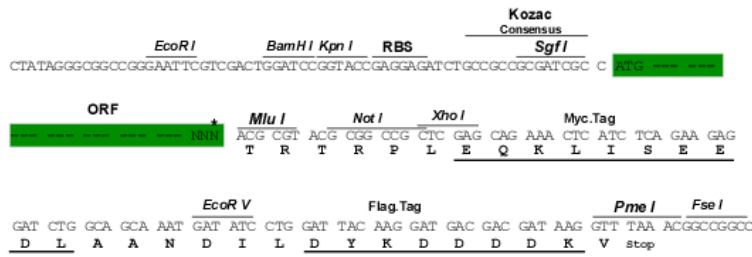
TRTRPLEQKLISEEDLAANDILDYKDDDDKV

Restriction Sites:

SgfI-MluI

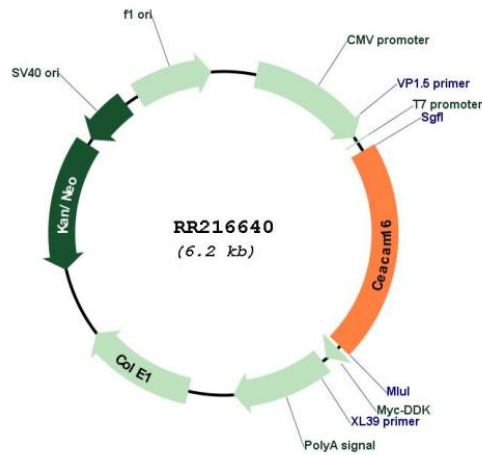
Cloning Scheme:

Cloning sites used for ORF Shuttling:



* The last codon before the Stop codon of the ORF

Plasmid Map:



ACCN:

NM_001169579

ORF Size:	1278 bp
OTI Disclaimer:	The molecular sequence of this clone aligns with the gene accession number as a point of reference only. However, individual transcript sequences of the same gene can differ through naturally occurring variations (e.g. polymorphisms), each with its own valid existence. This clone is substantially in agreement with the reference, but a complete review of all prevailing variants is recommended prior to use. More info
OTI Annotation:	This clone was engineered to express the complete ORF with an expression tag. Expression varies depending on the nature of the gene.
Components:	The ORF clone is ion-exchange column purified and shipped in a 2D barcoded Matrix tube containing 10ug of transfection-ready, dried plasmid DNA (reconstitute with 100 ul of water).
Reconstitution Method:	<ol style="list-style-type: none">1. Centrifuge at 5,000xg for 5min.2. Carefully open the tube and add 100ul of sterile water to dissolve the DNA.3. Close the tube and incubate for 10 minutes at room temperature.4. Briefly vortex the tube and then do a quick spin (less than 5000xg) to concentrate the liquid at the bottom.5. Store the suspended plasmid at -20°C. The DNA is stable for at least one year from date of shipping when stored at -20°C.
RefSeq:	NM_001169579.1 , NP_001163050.1
RefSeq Size:	1615 bp
RefSeq ORF:	1281 bp
Locus ID:	292700
Cytogenetics:	1q21
MW:	46.2 kDa