

Product datasheet for **RR216638**

Pnpla3 (NM_001282324) Rat Tagged ORF Clone

Product data:

Product Type: Expression Plasmids
Product Name: Pnpla3 (NM_001282324) Rat Tagged ORF Clone
Tag: Myc-DDK
Symbol: Pnpla3
Synonyms: Adpn
Vector: pCMV6-Entry (PS100001)
E. coli Selection: Kanamycin (25 ug/mL)
Cell Selection: Neomycin
ORF Nucleotide Sequence: >RR216638 representing NM_001282324
Red=Cloning site Blue=ORF Green=Tags(s)

TTTTGTAATACGACTCACTATAGGGCGCCGGAATTCGTCGACTGGATCCGGTACCGAGGAGATCTGCC
GCC**GCGATCGCC**

ATGTACGACCCAGAGCGCCGCTGGAGCCTGTGCTTCGCAGGCTGCGGCTTCTAGGCTTCTACCACATCG
GGGCTACGCTATGTCTGAGCGAGCGCGCTCCGCACATCCTCCGGAAGCGCGCACTTTCTTCGGCTGCTC
GGCCGGTGCAGTGCACGCGGTACCTTCGTGTGCAGTTCCTCTCGATCACATCATGGAGATCCTCATG
GACCTCGTGCGGAAAGCCAGGAGCCGCAACATCGGCACCCTCCACCCGTTCTTAAACATTAACAAGTGCG
TCAGAGACGGCCTTCAGGAGACCCTCCCAGACAACGTCCACCAGATCATTCTGGCAAGGTTTACATCTC
ACTCACCAGAGTGTCCGATGGGAGAACGTGCTGGTGTCTGAGTTCATTCCAAAGACGAAGTGGTGGAT
GCCCTGGTGTGCTCCTGCTTCAATCCTCTCTTCTGCGCCTAATCCCTCCTTCTCCGAGGTGAGCGGT
ACGTGGATGGAGGAGTGAGTGACAACGTCCCTGTGCTGGACGCCAAAACCACCATCACGGTGTCCCTTT
CTATGGTGAGCATGACATCTGTCCAAAGTGAAGTCCACCAACTCCTCCAGGTGAATATACCAACCTC
AGTCTTCGTCTCTGCAGTGGGAACCTTCATCTTCTGACCAGACACTCTCCCATCTGATGTGAAGTGA
TGGGAGAGCTGTGCTTTCAAGGGTACCTGGACGCCTTCGGTTCCTGGAAGAGAACGGCATCTGTAATGG
GCCACAGCGCAGCCTGAGTCTGTCTTGGAGAAGGAAATGGCGCCAGAAACCATGATACCCTGCTTGAA
AATGGCCACCTTGTAGCAGGGAACAAGGTGCCAGTAAGCTGTGTATGCCTTACAGCTGTGCCGTCGGATG
AGAGCATCTGGGAGATGCTGTCCCAAGCTCAGCACAGCTCTGACTGAAGCGATTAAGACAGGGGGG
CTACCTGAACAAAGTCTGCAACCTCCTGCCATTAGGATCCTGTCTACATCTTGTGCTGCCCTGCACTCTG
CCCGTGGAGTCCGCCATCGCTGCAGTCCACAGGCTGGTGTGTGGCTCCCTGATATCCATGAAGATATCC
AGTGGCTACAGTGGCAACATCCAGGTGTGTGCCGAATGACCATGTGCTGCTCCCTCTACCAGATC
CAGAGCATCCAAGGATAACCATCAAACACTCAAGCATGGATATCACCCATCTCTCCAAACCCCAAGGC
AGCTCTGCCGTTTG

ACGCGTACGCGGCCGCTCGAGCAGAAACTCATCTCAGAAGAGGATCTGGCAGCAAATGATATCCTGGATT
ACAAGGATGACGACGATAAGGTTTAA



Protein Sequence: >RR216638 representing NM_001282324
Red=Cloning site Green=Tags(s)

MYDPERRWSLSFAGCGFLGFYHIGATLCLSERAPHILREARTFFGCSAGALHAVTFVCSLPLDHIMEILM
 DLVRKARSRNIGTLHPFFNINKCVRDGLQETLPDNPVHQIISGKVYISL TRVSDGENVLVSEFHSKDEVVD
 ALVCSCFIPLFSGLIPPSFRGERIYVGGVSDNPVLDAKTTITVSPFYGEHDICPKVKSTNFLQVNIITNL
 SLRLCTGNLHLLTRALFPSDVKVMGELCFQGYLDAFRFLEENGICNGPQRSLSLSLEKEMAPETMIPCLE
 NGHLYAGNKVPVSCVCLTAVPSDESIWEMLSPKLSTALTEAIKDRGGYLNKVCNLLPIRILSYILLPCTL
 PVESAIAAVHRLVMWLPDIHEDIQWLQWATSQVCARMTMCLLPSTRSRASKDNHQTCLKHGYPHSLHKPQG
 SSAGL

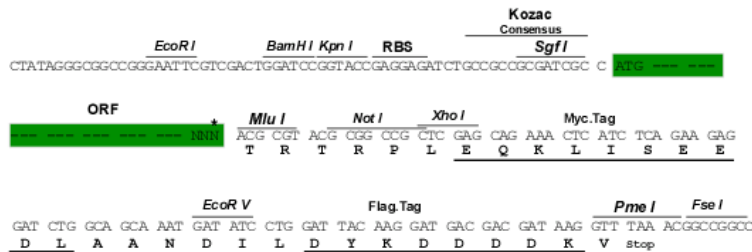
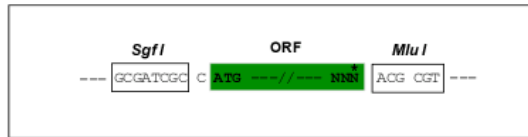
TRTRPLEQKLISEEDLAANDILDYKDDDDKV

Restriction Sites:

SgfI-MluI

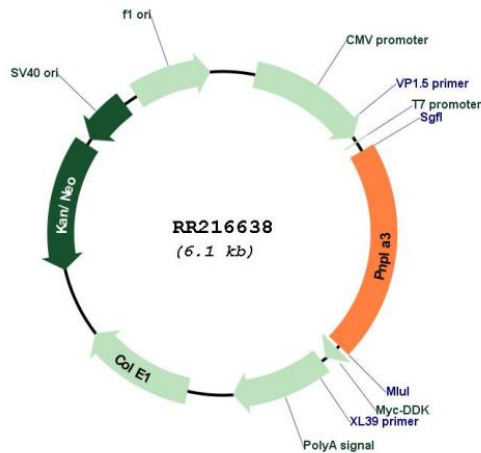
Cloning Scheme:

Cloning sites used for ORF Shuttling:



* The last codon before the Stop codon of the ORF

Plasmid Map:



ACCN:

NM_001282324

ORF Size:	1275 bp
OTI Disclaimer:	The molecular sequence of this clone aligns with the gene accession number as a point of reference only. However, individual transcript sequences of the same gene can differ through naturally occurring variations (e.g. polymorphisms), each with its own valid existence. This clone is substantially in agreement with the reference, but a complete review of all prevailing variants is recommended prior to use. More info
OTI Annotation:	This clone was engineered to express the complete ORF with an expression tag. Expression varies depending on the nature of the gene.
Components:	The ORF clone is ion-exchange column purified and shipped in a 2D barcoded Matrix tube containing 10ug of transfection-ready, dried plasmid DNA (reconstitute with 100 ul of water).
Reconstitution Method:	<ol style="list-style-type: none">1. Centrifuge at 5,000xg for 5min.2. Carefully open the tube and add 100ul of sterile water to dissolve the DNA.3. Close the tube and incubate for 10 minutes at room temperature.4. Briefly vortex the tube and then do a quick spin (less than 5000xg) to concentrate the liquid at the bottom.5. Store the suspended plasmid at -20°C. The DNA is stable for at least one year from date of shipping when stored at -20°C.
RefSeq:	NM_001282324.1 , NP_001269253.1
RefSeq Size:	2759 bp
RefSeq ORF:	1278 bp
Locus ID:	362972
Cytogenetics:	7q34
MW:	47.1 kDa