

Product datasheet for RR216629

Dcp2 (NM_001170469) Rat Tagged ORF Clone

Product data:

Product Type:	Expression Plasmids
Product Name:	Dcp2 (NM_001170469) Rat Tagged ORF Clone
Tag:	Myc-DDK
Symbol:	Dcp2
Synonyms:	RGD1562909
Vector:	pCMV6-Entry (PS100001)
E. coli Selection:	Kanamycin (25 ug/mL)
Cell Selection:	Neomycin
ORF Nucleotide Sequence:	>RR216629 representing NM_001170469 Red=Cloning site Blue=ORF Green=Tags(s)

TTTTGTAATACGACTCACTATAGGGCGCCGGAATTCGTCGACTGGATCCGGTACCGAGGAGATCTGCC
GCC**CGGATCGCC**

ATGGAGACCAAACGCCTGGAAATCCCAGGAGCGTCTGGATGATCTCTGCAGCCGATTTATTTGCATA
TTCCCAGTGAGGAAAGAGACAATGCAATCCGAGTGTGCTTCCAGATTGAACTCGCCATTGGTTTTACTT
GGATTTCTACATGCAGAACACACCAGGATTACCTCAGTGTGGGATAAGAGACTTTGCCAAAGCTGTCTTC
AGTCACGTGCCATTTCTGCTGCCACAAGGTGAAGACGTGGAAAAGATTCTGGATGAATGGAAGGAATATA
AAATGGGAGTACCAACTATGGTCAATTATTCTCGATGAGACACTGGAGAATGTACTGCTGGTTACGGG
GTACCTGGCAAAGTCAGGTTGGGGATTTCCAAAAGGAAAAGTAAATAAAGAAGAAGCACCTCATGACTGT
GCAGCTAGAGAGGTTCTCGAGGAAACTGGTTTTGACATAAAAGACTATATTTGTAAGGATGATTACATTG
AACTTCGAATCAATGACCAGCTTGTCTCGCTTGTACATCATTCCAGGAGTTCCAAAAGACACAAAATTTAA
CCCCAAAACCAGAAGAGAAATAGGAATATTGAGTGGTTCTCCATTGAGAAGTTGCCATGTCATAGAAAAC
GACATGACTCCCAAGTCCAAGCTCGGCTTGGCGCCCAATAAGTTTTTTATGGCCATCCCCTTTATCAGAC
CACTACGGGACTGGCTGTCTCGAAGGTTCCGAGATTCTCTGACAGTGATAATGGTTTTTCTCAGCTGG
TAGCACACCAGCTAGACCACCGTGAAAAACTGAGTCGAACGAAATTCGCCACAGCCAGCAGCTGTTTC
CCTGAAGTTCTCCTAGTGACCAATGGTAAAGCACAGGACGCCGCTGCAACAGAAGCACAGTAACCACA
CGGAGGTGTCGGACCTTTGCAAAGCAAAGAATCAAATATGAGAGGAAATGGCAGAAAACAGTATCAAGA
TTCACCTAATCAAAGAAGAGAGTGAACGGAATTCACGGTCAGCCAACAAAGCAGCAGAATCCTTTGATG
AAATGTGAAAAGAAGCTCCATCCACGAAAGCTTCAGGACAACCTTTGAGACAGATGCCGCATGTGATTTGC
CTTGTCTGGTGAAGACCCACTGGTAGAACATGCTGAGGGACATTCTGTAGCATGCAATGGACATTGCAA
ATTCCATTTTCATCCAGAACCTTTCTGAGTTTCAAGTTTGACCAAAACGCTATAATGAAAATCTTGGAC
CTT

ACGCGTACGCGGCCGCTCGAGCAGAAACTCATCTCAGAAGAGGATCTGGCAGCAAATGATATCCTGGATT
ACAAGGATGACGACGATAAGGTTTAA



Protein Sequence: >RR216629 representing NM_001170469
 Red=Cloning site Green=Tags(s)

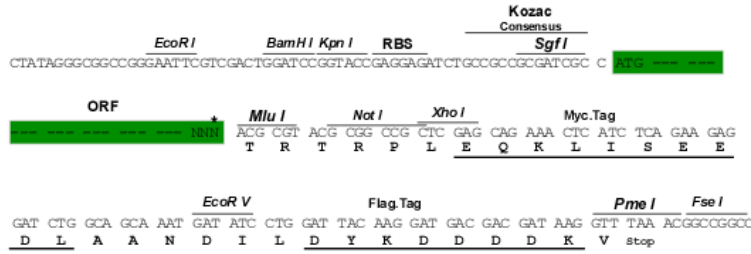
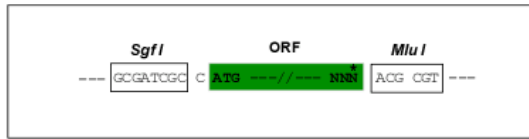
METKRLEIPGSVLDDLCRSRIFLHIPSEERDNAIRVCFQIELAHWFYLD FYMQNTPGLPQCGIRDFAKAVF
 SHCPFLLPQGEDVEKILDEWKEYKMGVPTYGAIILDETLNVLVQGYLAKSGWGFPGKGVNKEEAPHDC
 AAREVFEETGFDIKDYICKDDYIELRINDQLARLYIIPGVPKDTKFNPKTRREIRNIEWFSIEKLPCHRN
 DMTPKSKLGLAPNKFMAIPFIRPLRDWLSRRFGDSSSDNGFSSAGSTPARPTVEKLSRTKFRHSQQLF
 PEGSPSDQWVKHRQPLQKQKHSNHTEVSDLCKAKNQNMGRGKQYQDSPNQKRVNGIHGQPTKQQNPLM
 KCEKKLHPRKLQDNFETDAACDLPCSGEDPLVEHAEGHSVACNGHCKFPFSSRTFLSFKFDQNAIMKILD
 L

TRTRPLEQKLISEEDLAANDILDYKDDDDKV

Restriction Sites:
 Cloning Scheme:

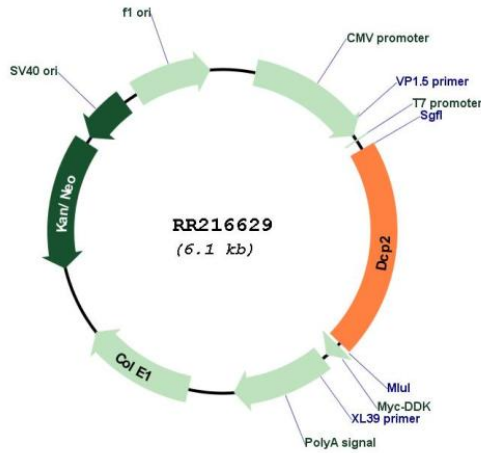
SgfI-MluI

Cloning sites used for ORF Shuttling:



* The last codon before the Stop codon of the ORF

Plasmid Map:



ACCN: NM_001170469

ORF Size:	1263 bp
OTI Disclaimer:	The molecular sequence of this clone aligns with the gene accession number as a point of reference only. However, individual transcript sequences of the same gene can differ through naturally occurring variations (e.g. polymorphisms), each with its own valid existence. This clone is substantially in agreement with the reference, but a complete review of all prevailing variants is recommended prior to use. More info
OTI Annotation:	This clone was engineered to express the complete ORF with an expression tag. Expression varies depending on the nature of the gene.
Components:	The ORF clone is ion-exchange column purified and shipped in a 2D barcoded Matrix tube containing 10ug of transfection-ready, dried plasmid DNA (reconstitute with 100 ul of water).
Reconstitution Method:	<ol style="list-style-type: none">1. Centrifuge at 5,000xg for 5min.2. Carefully open the tube and add 100ul of sterile water to dissolve the DNA.3. Close the tube and incubate for 10 minutes at room temperature.4. Briefly vortex the tube and then do a quick spin (less than 5000xg) to concentrate the liquid at the bottom.5. Store the suspended plasmid at -20°C. The DNA is stable for at least one year from date of shipping when stored at -20°C.
RefSeq:	NM_001170469.1 , NP_001163940.1
RefSeq Size:	1621 bp
RefSeq ORF:	1266 bp
Locus ID:	291604
Cytogenetics:	18p11
MW:	48.4 kDa