

Product datasheet for **RR216545**

NdrG4 (NM_001271092) Rat Tagged ORF Clone

Product data:

Product Type: Expression Plasmids
Product Name: NdrG4 (NM_001271092) Rat Tagged ORF Clone
Tag: Myc-DDK
Symbol: NdrG4
Synonyms: Bdm1; Ndr4; smap8
Vector: pCMV6-Entry (PS100001)
E. coli Selection: Kanamycin (25 ug/mL)
Cell Selection: Neomycin
ORF Nucleotide Sequence: >RR216545 representing NM_001271092
Red=Cloning site **Blue**=ORF **Green**=Tags(s)

TTTTGTAATACGACTCACTATAGGGCGCCGGAATTCGTCGACTGGATCCGGTACCGAGGAGATCTGCC
GCC**GCGATCGCC**

ATGAAGGTGCTGGGACACAGGCTCCAACCTGCTGACAGGGCTTCTGCTCCACGACGTGACCATGGCGGGGC
TGCAGGAGCTGCGATTTCTGAGGAGAAGCCCTTCTCCGGGGCCAGGATGCCACCGAGCTGGATAACCC
CGATGCCTTCTCTCAGTTGTGGACACGGACTGGAAGGAACATGACATTGAGACGCCTTATGGCCTCCTG
CATGTGGTGATCCGGGGCTCTCCAAAGGGAACCGCCAGCCATCCTTACCTACCAGATGTGGGTCTCA
ATCACAAGCTGTGCTTCAACACCCTGTTCAACTTGGAGGACATGCAGGAGATCACCAAACACTTCGTGGT
GTGCCATGTGGATGCCCTGGGCAGCAGGTGGGAGCGTACAGTTCCTCAGGGATACCGATTCCCTCC
ATGGAGCAGCTGGCGACCATGCTCCCGAGTGTGGTACAGCACTTGGATTCAAGTACGTGATTGGCATCG
GAGTGGGGCCGGAGCGTATGTGCTCGCCAAGTTGCACTCATCTTCCCTGATTTGGTGGAGGGCTGGT
GTTGATGAACATTGACCCAATGGCAAAGGCTGGATTGATTGGCTGCCACGAAGCTCTCCGGCTTGACC
AGCACTTTGCCAGATACTGTACTCTCCATCTCTTCAGCCAGGAGGAGCTGGTGAACAACACGGAGCTGG
TGCAGAGTACCGGCAGCAGATCTCGAGCGTGGTGAACCAGGCCAACCTTCAGCTCTTCTGGAACATGTA
CAATAGCCGCAGAGATCTTGACATTAACCGGCCTGGGACAGTGCCCAATGCCAAGACACTCCGCTGCCCA
GTGATGCTGGTGGTGGTGACAATGCACCTGCTGAGGACGGGGTGGTTGAGTGTAACTCCAACTGGACC
CAACCACTACAACCTTCTGAAGATGGCAGACTCTGGTGGTCTTCTCAGGTGACCCAGCCAGGGAAGCT
GACTGAGGCCTTCAAATACTTCTGCAGGGCATGGGCTACATGCCCTCAGCCAGCATGACCCGCCTTGCG
CGCTCTCGTACCGCGTCCCTCACCAGCGCCAGTTCTGTGGATGGTAGCCGCCCTCAGCCCTGCACCCACT
CAGACAGCAGTGAGGGGATGGGCCAGGTCAACCACACCATGGAGGTGCTCTGC

ACGCGTACGCGGCCGCTCGAGCAGAACTCATCTCAGAAGAGGATCTGGCAGCAAATGATATCTGGATT
ACAAGGATGACGACGATAAGGTTTAA



[View online »](#)

Protein Sequence: >RR216545 representing NM_001271092
Red=Cloning site Green=Tags(s)

MKVLGHRLLQLLTGLLLHDVTMAGLQELRFPEEKPLLRGQDATELDNPD AFLSVVDTDWKEHDIETPYGLL
 HVVIRGSPKGNRPAILTYHDVGLNHKLCFNLFNLEDMQEITKHFVVCHVDAPGQQV GASQFPQGYQFPS
 MEQLATMLPSVVQHFQFKYVIGIGV GAGAYVLAKFALIFPDLVEGLVLMNIDPNGKGWIDWAATKLSGLT
 STLPTDVLSHLFSQEELVNNTLVQSYRQQISSVVNQANLQLFWNMYNSRRDLINRPGTV PNAKTLRCP
 VMLVVGDNAPAEDGVVECN SKLDPTTTTFLKMADSGGLPQVTQPGKLTEAFKYFLQGMGYMPSASMTRLA
 RSRTASLTSASSVDGSRPQPCTHSDSSEGMGQVNHTMEVSC

TRTRPLEQKLISEEDLAANDILDYKDDDDKV

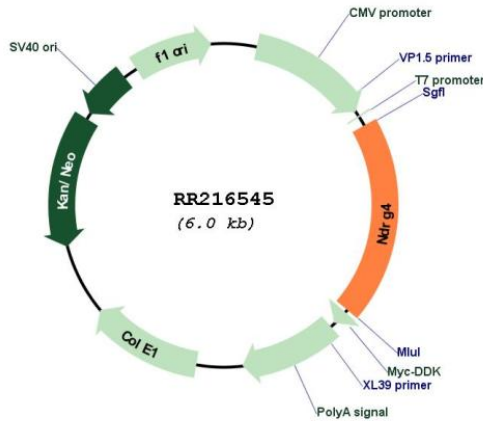
Restriction Sites:

SgfI-MluI

Cloning Scheme:



Plasmid Map:



ACCN: NM_001271092

ORF Size:	1173 bp
OTI Disclaimer:	The molecular sequence of this clone aligns with the gene accession number as a point of reference only. However, individual transcript sequences of the same gene can differ through naturally occurring variations (e.g. polymorphisms), each with its own valid existence. This clone is substantially in agreement with the reference, but a complete review of all prevailing variants is recommended prior to use. More info
OTI Annotation:	This clone was engineered to express the complete ORF with an expression tag. Expression varies depending on the nature of the gene.
Components:	The ORF clone is ion-exchange column purified and shipped in a 2D barcoded Matrix tube containing 10ug of transfection-ready, dried plasmid DNA (reconstitute with 100 ul of water).
Reconstitution Method:	<ol style="list-style-type: none">1. Centrifuge at 5,000xg for 5min.2. Carefully open the tube and add 100ul of sterile water to dissolve the DNA.3. Close the tube and incubate for 10 minutes at room temperature.4. Briefly vortex the tube and then do a quick spin (less than 5000xg) to concentrate the liquid at the bottom.5. Store the suspended plasmid at -20°C. The DNA is stable for at least one year from date of shipping when stored at -20°C.
RefSeq:	NM_001271092.1 , NP_001258021.1
RefSeq Size:	2885 bp
RefSeq ORF:	1176 bp
Locus ID:	64457
Cytogenetics:	19p13
MW:	43 kDa