

Product datasheet for **RR216535**

NdrG4 (NM_001271093) Rat Tagged ORF Clone

Product data:

Product Type: Expression Plasmids
Product Name: NdrG4 (NM_001271093) Rat Tagged ORF Clone
Tag: Myc-DDK
Symbol: NdrG4
Synonyms: Bdm1; Ndr4; smap8
Vector: pCMV6-Entry (PS100001)
E. coli Selection: Kanamycin (25 ug/mL)
Cell Selection: Neomycin
ORF Nucleotide Sequence: >RR216535 representing NM_001271093
Red=Cloning site Blue=ORF Green=Tags(s)

TTTTGTAATACGACTCACTATAGGGCGCCGGAATTCGTCGACTGGATCCGGTACCGAGGAGATCTGCC
GCC**CGGATCGCC**

ATGGCGGGGCTGCAGGAGCTGCGATTTCTGAGGAGAAGCCCTTCTCCGGGGCCAGGATGCCACCGAGC
TGGATAACCCCGATGCCTTCTCTCAGTTGTGGACACGGACTGGAAGGAACATGACATTGAGACGCCTTA
TGGCCTCTGCATGTGGTGATCCGGGGCTCTCCAAAGGGAACCGCCAGCCATCCTTACCTACCACGAT
GTGGGTCTCAATCACAAGCTGTGCTTCAACACCCTGTTCAACTTGGAGGACATGCAGGAGATCACCAAC
ACTTCGTGGTGTGCCATGTGGATGCCCTGGGCAGCAGGTGGGAGCGTCACAGTTCCTCAGGGATACCA
GTTCCCTCCATGGAGCAGCTGGCGACCATGCTCCCGAGTGTGGTACAGCACTTTGGATTCAAGTACGTG
ATTGGCATCGGAGTGGGGCCGGAGCGTATGTGCTCGCCAAGTTGCACTCATCTTCCCTGATTTGGTGG
AGGGGCTGGTGTGATGAACATTGACCCCAATGGCAAAGGCTGGATTGATTGGGCTGCCACGAAGCTCTC
CGGCTTGACCAGCACTTTGCCAGATACTGTACTCTCCATCTCTCAGCCAGGAGGAGCTGGTGAACAAC
ACGGAGCTGGTGCAGAGTACCGGCAGCAGATCTCGAGCGTGGTGAACCAGGCCAACCTTCAGCTCTTCT
GGAACATGTACAATAGCCGCAGAGATCTTGACATTAACCGGCTGGGACAGTGCCCAATGCCAAGACACT
CCGCTGCCAGTGATGCTGGTGGTGGTGAACAATGCACCTGTGAGGACGGGGTGGTTGAGTGAACCTCC
AAACTGGACCCAACCACTACAACCTTCTGAAGATGGCAGACTCTGGTGGTCTTCTCAGGTGACCCAGC
CAGGGAAGCTGACTGAGGCCTTCAAATACTTCTGCAGGGCATGGGCTACATTGCACACTTGAAGGACCG
AAGGCTCAGTGGAGGAGCAGTGCCTCAGCCAGCATGACCCGCTTGCAGCGCTCTCGTACCAGCTCCCTC
ACCAGCGCAGTTCTGTGGATGGTAGCCGCCCTCAGCCCTGCACCACTCAGACAGCAGTGGGGGATGG
GCCAGGTCAACCACCATGGAGGTGCTCTGC

ACGCGTACGCGGCCGCTCGAGCAGAACTCATCTCAGAAGAGGATCTGGCAGCAAATGATATCTGGATT
ACAAGGATGACGACGATAAGGTTTAA



[View online »](#)

Protein Sequence: >RR216535 representing NM_001271093
 Red=Cloning site Green=Tags(s)

MAGLQELRFPEEKPLLRGQDATELDNPD AFLSVVDTDWKEHDIETPYGLLHV VIRGSPKGNRPAILTYHD
 VGLN HKLCFN TLFN LEDMQEITKHFV VCHVDAPGQQV GASQFPQGYQFPSMEQLATMLPSV VQHFGFKYV
 IGIVGAGAYVLAKFALIFPD LVEGLVLMNIDP NGKGWIDWAATKLSGLTSTLPD TVLSHLFSQEELVNN
 TELVQSYRQQISSVVNQANLQLFWNMYNSRRDLINRPGTVPN AKTLRCPVMLVVDNAPAEDGVVECNS
 KLDPTTTTFLKMADSGGLPQVTQPGKLTEAFKYFLQGMGYIAHLKDRRLSGGAVPSASMTLARSRTASL
 TSASSVDGSRPQPCTHSDSSEGMGQVNHTMEVSC

TRTRPLEQKLISEEDLAANDILDYKDDDDKV

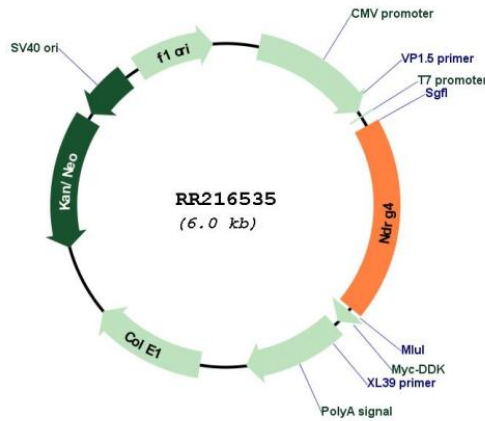
Restriction Sites:

SgfI-MluI

Cloning Scheme:



Plasmid Map:



ACCN: NM_001271093

ORF Size:	1152 bp
OTI Disclaimer:	The molecular sequence of this clone aligns with the gene accession number as a point of reference only. However, individual transcript sequences of the same gene can differ through naturally occurring variations (e.g. polymorphisms), each with its own valid existence. This clone is substantially in agreement with the reference, but a complete review of all prevailing variants is recommended prior to use. More info
OTI Annotation:	This clone was engineered to express the complete ORF with an expression tag. Expression varies depending on the nature of the gene.
Components:	The ORF clone is ion-exchange column purified and shipped in a 2D barcoded Matrix tube containing 10ug of transfection-ready, dried plasmid DNA (reconstitute with 100 ul of water).
Reconstitution Method:	<ol style="list-style-type: none">1. Centrifuge at 5,000xg for 5min.2. Carefully open the tube and add 100ul of sterile water to dissolve the DNA.3. Close the tube and incubate for 10 minutes at room temperature.4. Briefly vortex the tube and then do a quick spin (less than 5000xg) to concentrate the liquid at the bottom.5. Store the suspended plasmid at -20°C. The DNA is stable for at least one year from date of shipping when stored at -20°C.
RefSeq:	NM_001271093.1 , NP_001258022.1
RefSeq Size:	2871 bp
RefSeq ORF:	1155 bp
Locus ID:	64457
Cytogenetics:	19p13
MW:	42.1 kDa