

Product datasheet for **RR216530**

Sphk1 (NM_001270807) Rat Tagged ORF Clone

Product data:

Product Type:	Expression Plasmids
Product Name:	Sphk1 (NM_001270807) Rat Tagged ORF Clone
Tag:	Myc-DDK
Symbol:	Sphk1
Mammalian Cell Selection:	Neomycin
Vector:	pCMV6-Entry (PS100001)
E. coli Selection:	Kanamycin (25 ug/mL)
ORF Nucleotide Sequence:	>RR216530 representing NM_001270807 Red=Cloning site Blue=ORF Green=Tags(s)

TTTTGTAATACGACTCACTATAGGGCGGCCGGAATTCGTCGACTGGATCCGGTACCGAGGAGATCTGCC
GCC**CGATCGCC**

ATGCAACCAGCAGACTGTCCCCGGGGACTGCTCCACGGCCATGCAGAGTGTGGTGTCTGAACCCC
GGGGTGGCAAGGGCAAGGCTCTGAAGCTTTTCAGAGCCGTGTGCGGCCCTTCTGGAGGAGGCTGAGGT
ATCCTTTAAACTGATGCTCACCGAACGGCAGAACCATGCCAGGGAGCTGGTGTGTGCAGAAGAAGTGGT
CACTGGGATGCCTTGGCGGTCAATGTCCGGTGACGGTCTGATGCACGAGGTGGTGAATGGCTAATGGAAC
GACCTGACTGGGAGAGTGCCATCCAGAAACCCCTATGTAGCCTCCCTGGAGGCTCTGGCAATGCGCTGGC
AGCTTCTTTGAACACTATGCTGGGCACGAGCAGGTCACTAATGAAGATCTCTGATCAACTGCACACTG
CTGTTATGCTGCCGGCAGCTGTACCCATGAATCTGCTGTCCCTGCACACCGCTTCCGGACGGCAACTCT
ATTCTGTTCTCAGTCTGTCTGGGGTTTCGTTGCTGACGTGGACTTGGAGAGTGAGAAATACAGGAGCTT
GGGGGAGATTCGTTTCACGGTGGGAACCTTTTTTCGCCTAGCAAGCCTGCGCATTACCAAGGCCAACTG
GCCTACCTTCTGTAGGGAAGGCTGCCTCTAAGATACCTGCTTCTCACTGGCACAGAAGGGCCCTGCCA
ACACATACCTCGTTCCTCTGGAGGAGCCAGTGCCACCTCATTGGACTGTGGTCCAGAGCAGGACTTCGT
TCTGGTGTGGTGTCTTACACCCACCTGAGCACAGAGATGTTTGCAGACCCATGGCCGCTGCGAG
GCTGGTGTATGCATCTGTTCTATATACGTGCGGGGGTGTCAAGGGCCATGCTGCTGCGCCTCTTCTGG
CCATGCAGAAGGGCAAGCATATGGACCTCGACTGCCCGTACTTGGTTCATGTGCCAGTGGTTGCCTCCG
CCTGGAACCCAGGAACAGAGGGGAGTGTCTTCTGTGGACGGGGAGCTGATGGTGTGTGAAGCTGTGCAG
GGCCAAGTGCACCCAACTACCTTTGGATGGTCTCTGGTAGCAGTGACTCCCCGTCCGGCCGGGACTCCC
AGCGGAGGCCACCTCCAGAAGAACCAATA

ACGCGTACGCGGCCGCTCGAGCAGAACTCATCTCAGAAGAGGATCTGGCAGCAATGATATCCTGGATT
ACAAGGATGACGACGATAAGGTTTAA



[View online »](#)

Protein Sequence: >RR216530 representing NM_001270807
 Red=Cloning site Green=Tags(s)

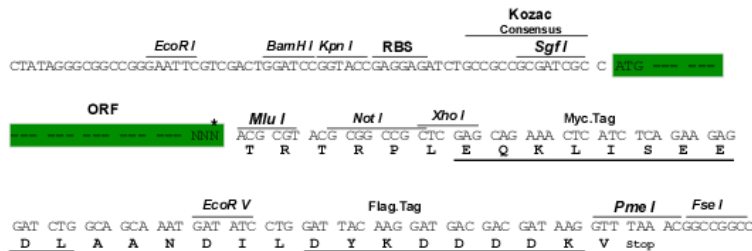
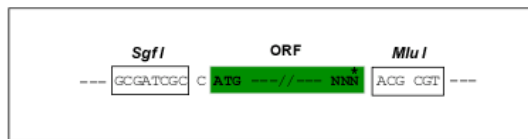
MQPADCPRGLLPRPCRVLVLLNPRGGKALKLFQSRVRPLLEEAEVSFKMLLTERQNHARELVCAEELG
 HWDALAVMSGDGLMHEVVNGLMERPDWESAIQKPLCSLPGGSGNALAASLNYYAGHEQVTNEDLLINCTL
 LLCCRQLSPMNLSSLHTASGRQLYSVLSLWGFVADVDLESEKYRSLGEIRFTVGTFFRLASLRIYQGQL
 AYLPGKAASKIPASSLAQKGPANTYLVPLEEPVPPHWTVVPEQDFVLVLLHHTLSTEMFAAPMGRCE
 AGVMHLFYIRAGVSRAMLLRLFLAMQKKGKHMDDLDCPYLVHVPVAFRLEPRNQGVF SVDGELMVCEAVQ
 GQVHPNYLWMVSGSSDSPSGRDSQRRPPPEEPI

TRTRPLEQKLISEEDLAANDILDYKDDDDKV

Restriction Sites: SgfI-MluI

Cloning Scheme:

Cloning sites used for ORF Shuttling:



* The last codon before the Stop codon of the ORF

ACCN: NM_001270807

ORF Size: 1149 bp

OTI Disclaimer: The molecular sequence of this clone aligns with the gene accession number as a point of reference only. However, individual transcript sequences of the same gene can differ through naturally occurring variations (e.g. polymorphisms), each with its own valid existence. This clone is substantially in agreement with the reference, but a complete review of all prevailing variants is recommended prior to use. [More info](#)

OTI Annotation: This clone was engineered to express the complete ORF with an expression tag. Expression varies depending on the nature of the gene.

Components: The ORF clone is ion-exchange column purified and shipped in a 2D barcoded Matrix tube containing 10ug of transfection-ready, dried plasmid DNA (reconstitute with 100 ul of water).

Reconstitution Method:

1. Centrifuge at 5,000xg for 5min.
2. Carefully open the tube and add 100ul of sterile water to dissolve the DNA.
3. Close the tube and incubate for 10 minutes at room temperature.
4. Briefly vortex the tube and then do a quick spin (less than 5000xg) to concentrate the liquid at the bottom.
5. Store the suspended plasmid at -20°C. The DNA is stable for at least one year from date of shipping when stored at -20°C.

RefSeq: [NM_001270807.1](#), [NP_001257736.1](#)

RefSeq Size: 1929 bp

RefSeq ORF: 1152 bp

Locus ID: 170897

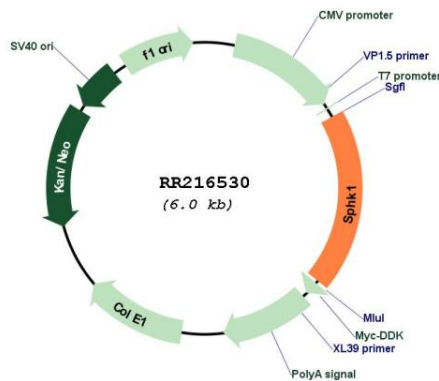
UniProt ID: [Q91V26](#)

Cytogenetics: 10q32.1-q32.2

MW: 42.4 kDa

Gene Summary: catalyzes the conversion of sphingosine to sphingosine 1 phosphate, which plays a role in cell proliferation and differentiation [RGD, Feb 2006]

Product images:



Circular map for RR216530