

## Product datasheet for **RR216529**

### Mapk9 (NM\_001270545) Rat Tagged ORF Clone

#### Product data:

|                          |  |
|--------------------------|--|
| Product Type:            | Expression Plasmids  |
| Product Name:            | Mapk9 (NM_001270545) Rat Tagged ORF Clone                                      |
| Tag:                     | Myc-DDK  |
| Symbol:                  | Mapk9  |
| Synonyms:                | SAPK   |
| Vector:                  | pCMV6-Entry (PS100001)   |
| E. coli Selection:       | Kanamycin (25 ug/mL)   |
| Cell Selection:          | Neomycin   |
| ORF Nucleotide Sequence: | >RR216529 representing NM_001270545<br>Red=Cloning site Blue=ORF Green=Tags(s) |

TTTTGTAATACGACTCACTATAGGGCGCCGGAATTCGTCGACTGGATCCGGTACCGAGGAGATCTGCC  
GCC**CGGATCGCC**

ATGAGTGACAGTAAAAGCGATGGCCAGTTTTACAGTGTGCAAGTGGCAGACTCAACTTTCACTGTTCTAA  
AACGTTACCAGCAGTTGAAACCAATTGGCTCTGGAGCCCAAGGAATTGTTGTGCTGCTTTTGATACAGT  
TCTTGGAAATAAATGTTGCTGTCAAGAAGTTAAGTCGTCCTTTTCAGAACCAAACGCATGCAAAGAGAGCC  
TACCGTGAACCTTGCTCCTAAAGTGTGTCAATCATAAAAATATAATTAGCTTGTAAATGTGTTACAC  
CACAAAAACGCTAGAAGAATCCAAGATGTGTACTTGTTATGGAGTTAATGGACGCTAACTTATGTCA  
GGTTATTCATATGGAGCTGGACCATGAAAGAATGTCATACCTCCTCTACCAGATGCTTTGTGGCATTAAAG  
CACCTGCATTCAGCTGGCATAATTCATAGGGATTTGAAGCCTAGCAACATTGTAGTAAAAATCAGACTGTA  
CTCTCAAGATCCTTGACTTTGGCCTGGCACGGACAGCCTGTACCAACTTTATGATGACTCCCTATGTGGT  
AACTCGTACTATCGGGCTCCAGAAGTCATCCTGGGCATGGGCTACAAGGAGAATGTTGATATCTGGTCA  
GTGGGTTGCATCATGGGAGAGCTGGTGAAGGTTGTGTGATATTCCAAGTACTGACCATTGATCAAT  
GGAATAAAGTTATTGAACAGCTAGGAACACCATCCGCAGAGTTCATGAAGAAACTTCAGCCAAGTAAAG  
GAATTATGTGAAAACAGACCAAAGTACCCTGGAATCAAATTTGAAGAGCTCTTTCCAGATTGGATATTT  
CCGTGAGAATCCGAACGAGACAAAATAAAAACAAGTCAAGCCAGAGATCTGTTATCGAAAATGTTAGTGA  
TTGATCCGGACAAGCGGATCTCTGTGGACGAAGCCTTGCGCCACCCGTATATTACTGTTTGGTATGACCC  
CGCTGAAGCAGAAGCGCCACCACCTCAAATTTATGATGCCAGTTGGAAGAAAGAGAGCATGCGATTGAA  
GAGTGGAAAGAATAATTTACAAAGAAGTATGGACTGGGAAGAAAGAAGCAAGAATGGGGTGAAGACC  
AGCCTTCAGCACAGATGCAGCAG

**ACGCGT**ACGCGGCCGCTCGAGCAGAAACTCATCTCAGAAGAGGATCTGGCAGCAAATGATATCCTGGATT  
ACAAGGATGACGACGATAAGGTTTAA



**Protein Sequence:** >RR216529 representing NM\_001270545  
 Red=Cloning site Green=Tags(s)

MSDSKSDGQFYSVQVADSTFTVLKRYQLKPIGSGAQQIVCAAFDTVLGINVAVKKLSRPFQNTAKRA  
 YRELVLLKCVNHKNIISLLNVFTPQKLEEFQDVYLVMEMLDANLCQVIHMELDHERMSYLLYQMLCGIK  
 HLHSAGIIHRDLKPSNIVVKSDC TLKILDFGLARTACTNFMTPYVVTRYRAPEVILGMGYKENVDIWS  
 VGCIMGELVKGCVIFQGTDHIDQWNKVIEQLGTPSAEFMKKLQPTVRNYVENRPKYPGIKFEELFPDWIF  
 PSESERDKIKTSQARDLLSKMLVIDPDKRISVDEALRHPYITVWYDPAEAEAPPPQIYDAQLEEREHAIE  
 EWKELIYKEVMDWEERSKNGVKDQPSAQMQQ

TRTRPLEQKLISEEDLAANDILDYKDDDDKV

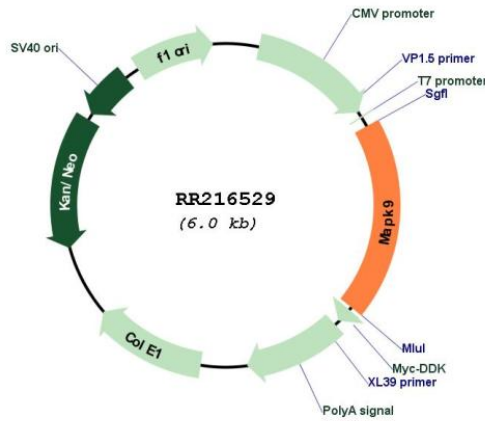
**Restriction Sites:**

SgfI-MluI

**Cloning Scheme:**



**Plasmid Map:**



**ACCN:** NM\_001270545

|                               |   |
|-------------------------------|---|
| <b>ORF Size:</b>              | 1143 bp   |
| <b>OTI Disclaimer:</b>        | The molecular sequence of this clone aligns with the gene accession number as a point of reference only. However, individual transcript sequences of the same gene can differ through naturally occurring variations (e.g. polymorphisms), each with its own valid existence. This clone is substantially in agreement with the reference, but a complete review of all prevailing variants is recommended prior to use. <a href="#">More info</a>  |
| <b>OTI Annotation:</b>        | This clone was engineered to express the complete ORF with an expression tag. Expression varies depending on the nature of the gene.  |
| <b>Components:</b>            | The ORF clone is ion-exchange column purified and shipped in a 2D barcoded Matrix tube containing 10ug of transfection-ready, dried plasmid DNA (reconstitute with 100 ul of water).  |
| <b>Reconstitution Method:</b> | <ol style="list-style-type: none"><li>1. Centrifuge at 5,000xg for 5min.</li><li>2. Carefully open the tube and add 100ul of sterile water to dissolve the DNA.</li><li>3. Close the tube and incubate for 10 minutes at room temperature.</li><li>4. Briefly vortex the tube and then do a quick spin (less than 5000xg) to concentrate the liquid at the bottom.</li><li>5. Store the suspended plasmid at -20°C. The DNA is stable for at least one year from date of shipping when stored at -20°C.</li></ol>   |
| <b>RefSeq:</b>                | <a href="#">NM_001270545.1</a> , <a href="#">NP_001257474.1</a>   |
| <b>RefSeq Size:</b>           | 3716 bp   |
| <b>RefSeq ORF:</b>            | 1146 bp   |
| <b>Locus ID:</b>              | 50658   |
| <b>Cytogenetics:</b>          | 10q21   |
| <b>MW:</b>                    | 43.9 kDa  |
| <b>Gene Summary:</b>          | The protein encoded by this gene is a member of the MAP kinase family. MAP kinases are multifunctional proteins. They are involved in a wide variety of cellular processes such as growth, proliferation, differentiation, transcription regulation, and development. They function in stress responses, apoptosis, inflammation and transformation. For example, this kinase plays a dominant role in mediating proliferation of lung cancer and prostate cancer cells, and in regulation of osmotic stress-induced tight junction disruption. Several alternatively spliced transcript variants encoding distinct isoforms have been reported. [provided by RefSeq, Jul 2012] |