

## Product datasheet for **RR216505**

### **NdrG2 (NM\_001270862) Rat Tagged ORF Clone**

#### Product data:

**Product Type:** Expression Plasmids  
**Product Name:** NdrG2 (NM\_001270862) Rat Tagged ORF Clone  
**Tag:** Myc-DDK  
**Symbol:** NdrG2  
**Vector:** pCMV6-Entry (PS100001)  
**E. coli Selection:** Kanamycin (25 ug/mL)  
**Cell Selection:** Neomycin  
**ORF Nucleotide Sequence:** >RR216505 representing NM\_001270862  
**Red=Cloning site Blue=ORF Green=Tags(s)**

TTTTGTAATACGACTCACTATAGGGCGGCCGGGAATTCGTCGACTGGATCCGGTACCGAGGAGATCTGCC  
GCC**GCGATCGCC**

ATGGCAGAGCTTCAGGAGGTGCAGATCACTGAGGAGAAGCCACTGTTGCCAGGACAGACGCCTGAGGCTG  
CCAAGGAGGCTGAGTTAGCTGCCGAATCCTCCTGGACCAGGGACAGACTCATTCTGTGGAGACACCTTA  
TGGCTCCGTCACCTTTACCGTGTATGGCACCCCAACCGTCCAGCGATATTCACCTACCATGAT  
GTAGGACTCAACTATAAATCTTGCTTCCAGCCACTGTTTCAGTTCGGGGATATGCAAGAGATCATACAGA  
ACTTCGTGCGGGTCCATGTGGATGCCCTGGAATGGAAGAGGGGGCACCTGTGTTTCCTCTGGGGTACCA  
GTACCCATCTCTGGACCAGCTTGCAGACATGATTCCTTGCATCCTGCAGTACTTAAATTTCTCTACGATA  
ATTGGAGTTGGCGTTGGAGCTGGAGCATACATTCTGTACGATACGCTCTGAACCACCGGACACCGTTG  
AAGGTCTTGTTCATCAACATTGATCCCAACGCCAAGGGCTGGATGGATTGGCAGCCACAAGTTAAC  
CGGCCTTACGTCTCCATTCCGGAGATGATTCTTGGGCACCTTTTCAGCCAGGAAGAGCTTTCTGGAAAT  
TCTGAATTGATACAGAAGTATAGAAGTCTCATCACACGCGCCCAACCTGGAGAACATCGAACTGTATT  
GGAACAGTTACAACAACCGCCGAGACCTGAACTTTGAGCGAGGTGGTGGATGACCCTCAAGTGCCCGT  
GATGCTGGTGGTAGGAGACCAAGCACCTCATGAAGATGCCGTGGTGAATGTAATTCAAAACCTGGACCC  
ACACAGACCTCATTCTCAAGATGGCGGACTCTGGAGGTGAGCCGAGCTGACTCAGCCAGGCAAGCTGA  
CAGAAGCTTTCAAGTACTTCGTGCAAGGCATGGGCTACATGGCCTCATCCTGTATGACTCGCCTGTCTCG  
GTCTCGCACAGCATCTCTGACCAGTGCGGCATCCATCGATGGCAGTCGGTCCCGATCCCGCACCTGTGCG  
CAGAGTAGCGAGTCTGGGACTCTCCCTTCTGGACCCCGGGGCACACCATGGAAGTCTCCTGT

**ACGCGT**ACGCGGGCCGCTCGAGCAGAACTCATCTCAGAAGAGGATCTGGCAGCAAATGATATCCTGGATT  
ACAAGGATGACGACGATAAAGTTTAA



[View online »](#)

**Protein Sequence:** >RR216505 representing NM\_001270862  
 Red=Cloning site Green=Tags(s)

MAELQEVQITEEKPLLPQGTPEAAKEAELARILLDQGQTHSVETPYGSVTFVYGTGPKPKRPAIFTYHD  
 VGLNYSKSCFQPLFQFGDMQEIIQNFRVHVHDAPGMEEGAPVFPLGYQYPSLDQLADMIPCILQYLNFS  
 TIGVGVGAGAYILSRALNHPDTEGLVLEINIDPNAKGWMDWAHKLTLTSSIPMILGHLFSQEELSGN  
 SELIQKYRSLITHAPNLENIELYWNSYNNRRDLNFERGGEMTLKCPVMLVVGDDQAPHEDAVVECNSKLD  
 P TQT SFLKMADSGGQPLTOPGKLTEAFKYFVQGMGYMASSCMTRLRSRRTASLTAASIDGSRSRRTLS  
 QSSESGTLPSGPPGHTMEVSC

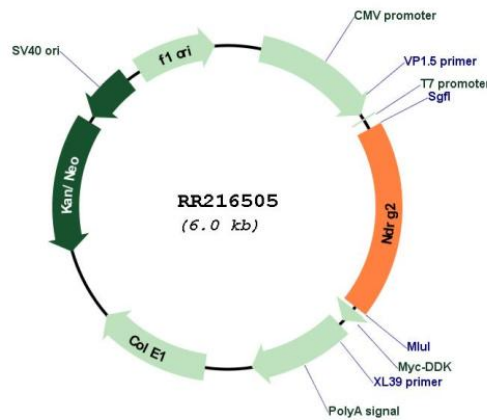
TRTRPLEQKLISEEDLAANDILDYKDDDDKV

**Restriction Sites:** SgfI-MluI

**Cloning Scheme:**



**Plasmid Map:**



**ACCN:** NM\_001270862

<b>ORF Size:</b>	1113 bp
<b>OTI Disclaimer:</b>	The molecular sequence of this clone aligns with the gene accession number as a point of reference only. However, individual transcript sequences of the same gene can differ through naturally occurring variations (e.g. polymorphisms), each with its own valid existence. This clone is substantially in agreement with the reference, but a complete review of all prevailing variants is recommended prior to use. <a href="#">More info</a>
<b>OTI Annotation:</b>	This clone was engineered to express the complete ORF with an expression tag. Expression varies depending on the nature of the gene.
<b>Components:</b>	The ORF clone is ion-exchange column purified and shipped in a 2D barcoded Matrix tube containing 10ug of transfection-ready, dried plasmid DNA (reconstitute with 100 ul of water).
<b>Reconstitution Method:</b>	<ol style="list-style-type: none"><li>1. Centrifuge at 5,000xg for 5min.</li><li>2. Carefully open the tube and add 100ul of sterile water to dissolve the DNA.</li><li>3. Close the tube and incubate for 10 minutes at room temperature.</li><li>4. Briefly vortex the tube and then do a quick spin (less than 5000xg) to concentrate the liquid at the bottom.</li><li>5. Store the suspended plasmid at -20°C. The DNA is stable for at least one year from date of shipping when stored at -20°C.</li></ol>
<b>RefSeq:</b>	<a href="#">NM_001270862.1</a> , <a href="#">NP_001257791.1</a>
<b>RefSeq Size:</b>	2042 bp
<b>RefSeq ORF:</b>	1116 bp
<b>Locus ID:</b>	171114
<b>UniProt ID:</b>	<a href="#">Q8VBU2</a>
<b>Cytogenetics:</b>	15p14
<b>MW:</b>	40.8 kDa
<b>Gene Summary:</b>	may play a significant role in mineralocorticoid signaling [RGD, Feb 2006]