

## Product datasheet for **RR216462**

### NdrG2 (NM\_001270864) Rat Tagged ORF Clone

#### Product data:

**Product Type:** Expression Plasmids  
**Product Name:** NdrG2 (NM\_001270864) Rat Tagged ORF Clone  
**Tag:** Myc-DDK  
**Symbol:** NdrG2  
**Vector:** pCMV6-Entry (PS100001)  
**E. coli Selection:** Kanamycin (25 ug/mL)  
**Cell Selection:** Neomycin  
**ORF Nucleotide Sequence:** >RR216462 representing NM\_001270864  
Red=Cloning site Blue=ORF Green=Tags(s)

TTTTGTAATACGACTCACTATAGGGCGGCCGGAATTCGTCGACTGGATCCGGTACCGAGGAGATCTGCC  
GCCCGATCGCC

ATGGCAGAGCTTCAGGAGGTGCAGATCACTGAGGAGAAGCCACTGTTGCCAGGACAGACGCCTGAGGCTG  
CCAAGACTCATTCTGTGGAGACACCTTATGGCTCCGTCACCTTTACCGTGTATGGCACCCCCAAACCCAA  
ACGTCCAGCGATATTCACCTACCATGATGTAGGACTCAACTATAAATCTTGCTTCCAGCCACTGTTTCAG  
TTCGGGGATATGCAAGAGATCATACAGAACTTCGTGCGGGTCCATGTGGATGCCCTGGAATGGAAGAGG  
GGGCACCTGTGTTTCTCTGGGGTACCAGTACCCATCTCTGGACCAGCTTGCAGACATGATTCTTGCAT  
CCTGCAGTACTTAAATTTCTCTACGATAATTGGAGTTGGCGTTGGAGCTGGAGCATACTTCTGTACCGA  
TACGCTCTGAACCACCCGGACACCGTTGAAGGTCTTGTCTCATCAACATTGATCCCAACGCCAAGGGCT  
GGATGGATTGGGAGCCACAAGTTAACCGGCCTTACGTCTTCCATTCCGGAGATGATTCTTGGGCACCT  
TTTCAGCCAGGAAGAGCTTTCTGGAATTTCTGAATTGATACAGAAGTATAGAAGTCTCATCACACACCGG  
CCCAACCTGGAGAACATCGAACTGTATTGGAACAGTTACAACAACCGCCGAGACCTGAACCTTGGAGCG  
GTGGTGAAGATGACCTCAAGTGCCTGATGCTGGTGGTGGAGACCAAGCACCTCATGAAGATGCCGT  
GGTGAATGTAATTCAAACCTGGACCCACACAGACCTCATTCCCAAGATGGCGGACTCTGGAGGTCAG  
CCGAGCTGACTCAGCCAGGCAAGCTGACAGAAGCTTCAAGTACTTCGTGCAAGGCATGGGCTACATGG  
CCTCATCTGTATGACTCGCCTGTCTCGGTCTCGCACAGCATCTCTGACCAGTGGCGCATCCATCGATGG  
CAGTCGGTCCCGATCCCGCACCTGTGCGCAGAGTAGCGAGTCTGGGACTCTCCCTTCTGGACCCCGGGG  
CACACCATGGAAGTCTCCTGT

ACGCGTACGCGGCCGCTCGAGCAGAACTCATCTCAGAAGAGGATCTGGCAGCAAATGATATCCTGGATT  
ACAAGGATGACGACGATAAGGTTTAA



[View online »](#)

**Protein Sequence:** >RR216462 representing NM\_001270864  
 Red=Cloning site Green=Tags(s)

MAELQEVQITEEKPLLPQGTPEAAKTHSVETPYGSVTFVYGTGPKKRP AIFTYHDVGLNYKSCFQPLFQ  
 FGD MQEIIQN FVRVHVDAPGMEEGAPVFPLGYQYPSLDQLADMIPCILQYLNFS TIIGVGVGAGAYILSR  
 YALNHPD TVEGLVLINIDPNAGWMDWAHKL TGLTSSIPEMILGHLSQEELSGNSELIQKYRSLITHA  
 PNLENIELYWNSYNNRRDLNFERGEMTLKCPVMLVVG DQAPHEDAVVECN SKLDPTQTSFLKMADSGGQ  
 PQLTQPGLTEAFKYFVQGMGYMASSCMTRL SRRTASL TSAASIDGSR SRRTL SQSSESGTLPSGPPG  
 HTMEVSC

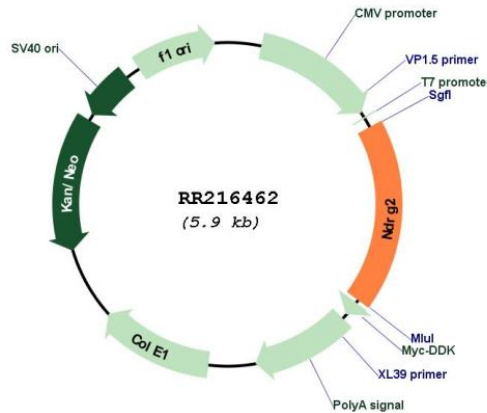
TRTRPLEQKLISEEDLAANDILDYKDDDDKV

**Restriction Sites:** SgfI-MluI

**Cloning Scheme:**



**Plasmid Map:**



**ACCN:** NM\_001270864

<b>ORF Size:</b>	1071 bp
<b>OTI Disclaimer:</b>	The molecular sequence of this clone aligns with the gene accession number as a point of reference only. However, individual transcript sequences of the same gene can differ through naturally occurring variations (e.g. polymorphisms), each with its own valid existence. This clone is substantially in agreement with the reference, but a complete review of all prevailing variants is recommended prior to use. <a href="#">More info</a>
<b>OTI Annotation:</b>	This clone was engineered to express the complete ORF with an expression tag. Expression varies depending on the nature of the gene.
<b>Components:</b>	The ORF clone is ion-exchange column purified and shipped in a 2D barcoded Matrix tube containing 10ug of transfection-ready, dried plasmid DNA (reconstitute with 100 ul of water).
<b>Reconstitution Method:</b>	<ol style="list-style-type: none"><li>1. Centrifuge at 5,000xg for 5min.</li><li>2. Carefully open the tube and add 100ul of sterile water to dissolve the DNA.</li><li>3. Close the tube and incubate for 10 minutes at room temperature.</li><li>4. Briefly vortex the tube and then do a quick spin (less than 5000xg) to concentrate the liquid at the bottom.</li><li>5. Store the suspended plasmid at -20°C. The DNA is stable for at least one year from date of shipping when stored at -20°C.</li></ol>
<b>RefSeq:</b>	<a href="#">NM_001270864.1</a> , <a href="#">NP_001257793.1</a>
<b>RefSeq Size:</b>	1982 bp
<b>RefSeq ORF:</b>	1074 bp
<b>Locus ID:</b>	171114
<b>UniProt ID:</b>	<a href="#">Q8VBU2</a>
<b>Cytogenetics:</b>	15p14
<b>MW:</b>	39.3 kDa
<b>Gene Summary:</b>	may play a significant role in mineralocorticoid signaling [RGD, Feb 2006]