

Product datasheet for **RR216438**

Gbx2 (NM_053708) Rat Tagged ORF Clone

Product data:

Product Type:	Expression Plasmids
Product Name:	Gbx2 (NM_053708) Rat Tagged ORF Clone
Tag:	Myc-DDK
Symbol:	Gbx2
Vector:	pCMV6-Entry (PS100001)
E. coli Selection:	Kanamycin (25 ug/mL)
Cell Selection:	Neomycin
ORF Nucleotide Sequence:	>RR216438 representing NM_053708 Red=Cloning site Blue=ORF Green=Tags(s)

TTTTGTAATACGACTCACTATAGGGCGGCCGGAATTCGTCGACTGGATCCGGTACCGAGGAGATCTGCC
GCC**CGATCGCC**

ATGAGCGCAGCGTCCCGCGTCGCTGATGATGATGCAGCGCCCGCTGGGGAGTAGTACCGCCTTCAGCA
TAGACTCGCTGATCGGCAGCCCGCCGAGCCAGTCCCGGCATTCGTCTACACCGGCTACCCCATGTT
TATGCCCTACCGCCGGTGGTGTGCTGCCGCCACCGCCCGCCGCTCCCGCGCTGCCCCAGGCAGCGTA
CAGCCCGCGCTGCCGCCCGCGCACCTCACACCAGATCCCGAGTTGCCACCGGCTTCTGCTCCAGCC
TGGCGCAGGGCATGGCGCTCACCTCCACTCTCATGGCCACGCTGCCCGGGGCTTCTCTGCGTCGCCCA
GCACCAAGAGGGCGCCGCGCCGCAAGTTCGCTCCGAGCCGCTGCCTGGAGGGGCAACTTCGACAAA
TCCGAGGCCTCAAGCCGATACGGAGGACGGCAAAGCCTTCTTGGCAAGGAGGCTCGCTGCTCGCCT
TCTCTGCGCCGAAGCGGTGCAAGCGTCGCTCGTCGGGGCTGCCGAGGGCAAGGAAAGACGAGTCAA
GGTGAAGATGACCCGAAGGGCAAGGAGGAGAGCTTCTCTGGAGAGCGATGTGGATTACAGCTCAGAT
GACAATTTGCCTGGCCAGACTGCTCATAAGGAAGAAGACCCCGCCACGCACTGGAGGAGACCCCGCAGA
GCGGCGGTGCGCAGGTAGCACACGTCCACAGCAAGAACCAGGGCGGGGACTGCCTTTACCAGCGA
GCAGCTGCTGGAGCTGGAGAAGGAATCCACTGCAAAAAGTACCTCTCCCTGACCGAGCGCTCACAGATC
GCCCATGCCCTCAAACCTAGCGAGGTGCAAGTAAATCTGGTTCAGAACCCGCCGGCCAAAGTGGAAAC
GTGTCAAGGCAGGCAACGCCAATCCAAGACGGGGAGCCCTCTCGGAACCCCAAGATCGTAGTCCCAT
CCCTGTCCATGTCAGCAGGTTTCGCTATTCGAAGTCAACACCAGCAGCTGGAGCAGGCCCGACCC

ACGCGTACGCGGGCGCTCGAGCAGAACTCATCTCAGAAGAGGATCTGGCAGCAAATGATATCCTGGATT
ACAAGGATGACGACGATAAGGTTTAA



[View online »](#)

Protein Sequence: >RR216438 representing NM_053708
 Red=Cloning site Green=Tags(s)

MSAAFPPSLMMMQRPLGSSTAFSIDSLIGSPPQSPGHFVYTGYPMFMPYRPVVLPPPPPPPPALPQAAL
 QPALPPAHPHHQIPSLPTGFCSSLAQGMALTSTLMATLPGGFASAPQHQEAARAFAPQLPGGGNFDK
 SEALQADTEDGKAFLAKEGSLAFSAEAVQASLVGAVRGQKDESKVEDDPKGGKEESFLESVDVYSSD
 DNLPGQTAHKEEDPGHALEETPQSGGAAGSTTSTGKNRRRRRTAFTSEQLLELEKEFHCKKYLSTERSQI
 AHALKLSEVQVKIWFQNRRAKWKRVKAGNANSKTGEPNRPKIIVVPIPVHVSRFAIRSQHQLEQARP

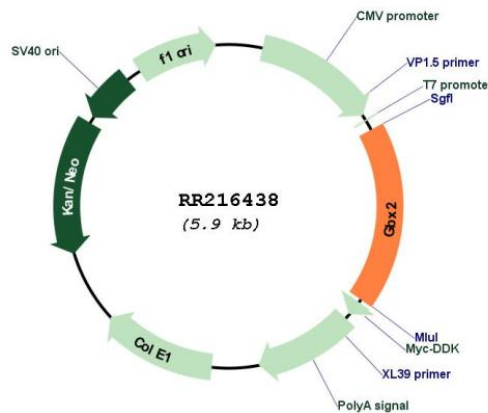
TRTRPLEQKLISEEDLAANDILDYKDDDDKV

Restriction Sites: SgfI-MluI

Cloning Scheme:



Plasmid Map:



ACCN: NM_053708

ORF Size:	1044 bp
OTI Disclaimer:	The molecular sequence of this clone aligns with the gene accession number as a point of reference only. However, individual transcript sequences of the same gene can differ through naturally occurring variations (e.g. polymorphisms), each with its own valid existence. This clone is substantially in agreement with the reference, but a complete review of all prevailing variants is recommended prior to use. More info
OTI Annotation:	This clone was engineered to express the complete ORF with an expression tag. Expression varies depending on the nature of the gene.
Components:	The ORF clone is ion-exchange column purified and shipped in a 2D barcoded Matrix tube containing 10ug of transfection-ready, dried plasmid DNA (reconstitute with 100 ul of water).
Reconstitution Method:	<ol style="list-style-type: none">1. Centrifuge at 5,000xg for 5min.2. Carefully open the tube and add 100ul of sterile water to dissolve the DNA.3. Close the tube and incubate for 10 minutes at room temperature.4. Briefly vortex the tube and then do a quick spin (less than 5000xg) to concentrate the liquid at the bottom.5. Store the suspended plasmid at -20°C. The DNA is stable for at least one year from date of shipping when stored at -20°C.
RefSeq:	NM_053708.2 , NP_446160.1
RefSeq Size:	1548 bp
RefSeq ORF:	1047 bp
Locus ID:	114500
Cytogenetics:	9q36
MW:	37.4 kDa