

Product datasheet for **RR216419**

Slamf7 (NM_001191550) Rat Tagged ORF Clone

Product data:

Product Type: Expression Plasmids
Product Name: Slamf7 (NM_001191550) Rat Tagged ORF Clone
Tag: Myc-DDK
Symbol: Slamf7
Synonyms: RGD1560190
Mammalian Cell Selection: Neomycin
Vector: pCMV6-Entry (PS100001)
E. coli Selection: Kanamycin (25 ug/mL)
ORF Nucleotide Sequence: >RR216419 representing NM_001191550
 Red=Cloning site Blue=ORF Green=Tags(s)

TTTTGTAATACGACTCACTATAGGGCGGCCGGAATTCGTCGACTGGATCCGGTACCGAGGAGATCTGCC
 GCC**CGATCGCC**

ATGGCTCGTTTCTCGACACATCATCTTTACCTCTGTCCTCTGCCAGCTAACAGTCACAGCAGCTTCTG
 GAACGCCAAAGGAGGTGGCCGGTGCCCTTGATGGATCTGTGACATTCACTCTGAATACTACTGAAGTAA
 AGTTGACAGTGTTGTATGGACCTCAAGACACTCTTTCTGCCATAATAAATAAAAAATGGTACCATCAA
 TCACAAAGTTATGAAGAAAGGATAGTCTTTTTAGATAGACTCCATGAAGCTCAGCCAGCTGAAGAAGA
 ATGACTCTGGAGACTACCGTGCAGAGATTCACATTGCGTCAAATTCACTTTCATCTCCCTTCATGCAGGA
 GTACGTGCTGCATGTCCATGAGCACCTGTCAAGGCCCAAGGTCAACACAGATTGCGAAAGCAGCAAGGAC
 GGCACCTGCATCTTAAATCTGACATGTTCCGTGGAACGGGGAGGAGAGAATGTGACATACAGCTGGAAAG
 CTGTGGGACAGACAGTCGATGAGTTTCATGACAGTGCCAACTCTCCATCTCCTGGAGACTGGGAGAGAA
 AGACAAGACCATAATCTGCACAGCCAGGAATCCAGTCAGCAGCAGTTCCTCAACCCCACTCCTCGCCAG
 AAGCTCTGTAAGATGCTGCCAAGGACCTAAATTCACCCAGGGTCCTCAAATACATTCTGTGCGTCACAC
 TAGTGCTCGTCTGTTCTGTATCCTGCTGGTGACTATTCTTTTTAGTGGATACCGAAAGGAAAAGGCTT
 TGAGGAAGACAAGAAGAGAGTGGACGGCCACCAGGAAATGTCCAACCTCTGCCCTCACTTGGAGAACACA
 GACTATGACACAATCCCTTACACAGAAAAACGAGACCAGAAGAAGATGCCCAAACACACTTTATTCCA
 CTGTGCAGATCCCCAAAGTGGATGCAGGGTCAAATCCTTTGGAGCTTACATGATGATACCACATAGCAG
 GATGCCAGATACGGAGCTTCAAGGCTTACGTCTCTCTGCCAGGTTT

ACGCGTACGCGGCCGCTCGAGCAGAAACTCATCTCAGAAGAGGATCTGGCAGCAAATGATATCCTGGATT
 ACAAGGATGACGACGATAAGGTTTAA



[View online »](#)

Protein Sequence: >RR216419 representing NM_001191550
Red=Cloning site Green=Tags(s)

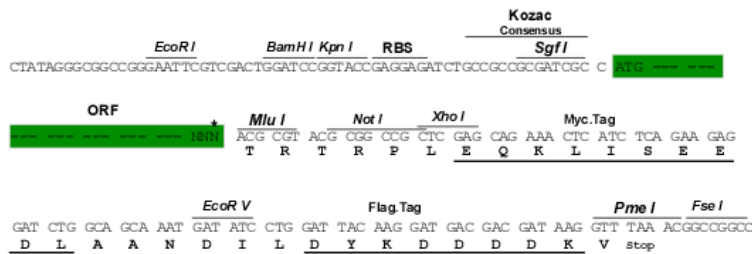
MARFSTHIIFTSVLCQLTVTAASGTPKEVAGALDGSVTFTLNTTEVKVDSVVWTFKTLFLAIINKNGTIK
 SQSYEERIVFLDRHSMKLSQLKKNDSGDYRAEIHASNSLSSPFMQEYVLHVHEHLSRPKVNTDSQSSKD
 GTCILNLTCsverggenVTYSWKAVGQTVDEFHDSANLSISWRLGEKDKTIICTARNPVSSSSSTPLLAQ
 KLCKDAAKDLNSPRVLKYILCVTLVLLVLCILLVTILFRWIPKGGFEEDKKRVDGHQEMSNCPHLENT
 DYDTIPYTEKTRPEEDAPNTLYSTVQIPKVDAGSKSFGAYMMIPHSRMPDTELQGLRLSARF

TRTRPLEQKLISEEDLAANDILDYKDDDDKV

Restriction Sites: SgfI-MluI

Cloning Scheme:

Cloning sites used for ORF Shuttling:



* The last codon before the Stop codon of the ORF

ACCN: NM_001191550

ORF Size: 1026 bp

OTI Disclaimer: Due to the inherent nature of this plasmid, standard methods to replicate additional amounts of DNA in E. coli are highly likely to result in mutations and/or rearrangements. Therefore, OriGene does not guarantee the capability to replicate this plasmid DNA. Additional amounts of DNA can be purchased from OriGene with batch-specific, full-sequence verification at a reduced cost. Please contact our customer care team at custsupport@origene.com or by calling 301.340.3188 option 3 for pricing and delivery.

The molecular sequence of this clone aligns with the gene accession number as a point of reference only. However, individual transcript sequences of the same gene can differ through naturally occurring variations (e.g. polymorphisms), each with its own valid existence. This clone is substantially in agreement with the reference, but a complete review of all prevailing variants is recommended prior to use. [More info](#)

OTI Annotation: This clone was engineered to express the complete ORF with an expression tag. Expression varies depending on the nature of the gene.

Components: The ORF clone is ion-exchange column purified and shipped in a 2D barcoded Matrix tube containing 10ug of transfection-ready, dried plasmid DNA (reconstitute with 100 ul of water).

Reconstitution Method:

1. Centrifuge at 5,000xg for 5min.
2. Carefully open the tube and add 100ul of sterile water to dissolve the DNA.
3. Close the tube and incubate for 10 minutes at room temperature.
4. Briefly vortex the tube and then do a quick spin (less than 5000xg) to concentrate the liquid at the bottom.
5. Store the suspended plasmid at -20°C. The DNA is stable for at least one year from date of shipping when stored at -20°C.

RefSeq: NM_001191550.1, NP_001178479.1

RefSeq Size: 1029 bp

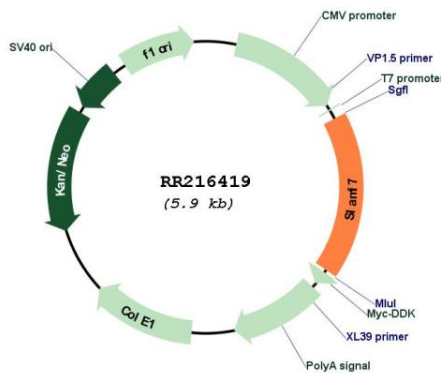
RefSeq ORF: 1029 bp

Locus ID: 364049

Cytogenetics: 13q24

MW: 38.2 kDa

Product images:



Circular map for RR216419