

Product datasheet for **RR216341**

Mageb4 (NM_001177683) Rat Tagged ORF Clone

Product data:

Product Type: Expression Plasmids
Product Name: Mageb4 (NM_001177683) Rat Tagged ORF Clone
Tag: Myc-DDK
Symbol: Mageb4
Synonyms: RGD1561997
Mammalian Cell Selection: Neomycin
Vector: pCMV6-Entry (PS100001)
E. coli Selection: Kanamycin (25 ug/mL)
ORF Nucleotide Sequence: >RR216341 representing NM_001177683
Red=Cloning site Blue=ORF Green=Tags(s)

TTTTGTAATACGACTCACTATAGGGCGGCCGGAATTCGTCGACTGGATCCGGTACCGAGGAGATCTGCC
GCC**CGCATCGCC**

ATGCCTAGGGGTCAAAGAGTAAGAACCCTCCCGTGCAAACGACAGCAGGCACGCAGGGAGGTCCCAG
AAGTTCAGCCCACTGCAGAGAAAGCAGGGTCTTCTGTTGACGAGAGCGTTGGCTCCAGCTTCCCTGATGG
TTCTGCTCCTCAGGGTGTAAAACCCCTGGATCTTTGGTGCAGGTGTCTCCTGCGCAGGCTCTGGTATA
GGTGTAGGAATGCTGCTGGTTTTGCTGATCAGAAAAGTTCAGATGGCACCCAGGCAGGGCTTCTGTTC
AGCACACACTTAAAGATCCTATCATGAGGAAGGCTAGTGTGCTGATAGAATTCCTGCTAGATAAATTTAA
GATGAAAGAAGCAGTTACAAAGAGTGAAATGCTGGCAGTAGTCAACAAGAAGTATAAGGAACATTTCTCT
GAGATCCTCCGGAGAACTTCTGCACGCCTAGAGTTAGTCTTTGGTCTTGAATTGAAGGAAATAGATGCCA
GCACTCAATCCTATTTGCTGGTGGGCAAACCTGGGTCTTTCCACTGAGGGAAGTTTGGAGTAGTAATGGGG
GTTGCCAAGACAGGTCTCCTGATGTCCATCCTAGGTGTGATCTTCATGAAGGGTAACCGTGCCACTGTG
CAAGAGGTCTGGCAATTTCTGAATGGAGTGGGGTATATGTTGGGAAGAAGCACTTAATCTTTGGAGAGC
CTGAGGCATTTATAACAGATCTAGTGCAGGAAAATTACCTGGCGTACCGCCAGGTACCTAGCAGTGATCC
CCCAAGCTATGAGTTCCTGTGGGACCCAGAGCCCATGCTGAAACCACCAAGATGAAAGTCTGGAAGTT
TTAGCTAAGGTCAATGGCACTGTCCCTAGTGCCTCCCTAATCTCTATCAGTTGGCTCTTAGAGATCAGG
CAGAGGGTACCAAGAAGAAGAGTTC AAGGCAAGGCTGT

ACGCGTACGCGGCCGCTCGAGCAGAAACTCATCTCAGAAGAGGATCTGGCAGCAAATGATATCCTGGATT
ACAAGGATGACGACGATAAGGTTTAA



[View online »](#)

Protein Sequence: >RR216341 representing NM_001177683
Red=Cloning site Green=Tags(s)

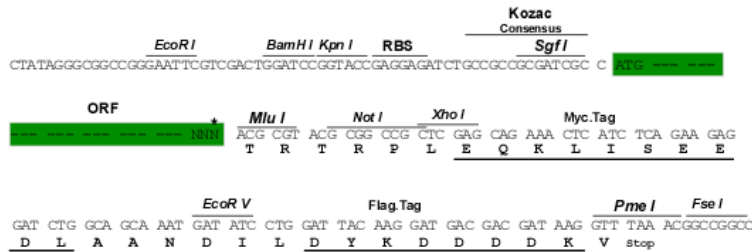
MPRGQKSKNRSRAKRQQARREVPEVQPTAEKAGSSVDES VGSSFPDGSAPQGVKTPGSFGAGVSCAGSGI
 GVRNAAGFADQKSSDGTQAGASVQHTLKDPI MRKASVLI EFLLDKFKMKEAVTKSEMLAVVNKYYKEHFS
 EILRRTSARLELVFGLELKEIDASTQSYLLVGKLG LSTEGSLSSNWGLPKTGLLMSILGVIFMKGNRATV
 QEVWQFLNGVGVYVGKHLIFGEPEAFITDLVQENYLA YRQVPSSDPPSYEFLWGPRAHAETTKMKVLEV
 LAKVNGTVP SAFPNLYQLALRDQAEGTKKKSSRQGC

TRTRPLEQKLISEEDLAANDILDYKDDDDKV

Restriction Sites: SgfI-MluI

Cloning Scheme:

Cloning sites used for ORF Shuttling:



* The last codon before the Stop codon of the ORF

ACCN: NM_001177683

ORF Size: 948 bp

OTI Disclaimer: The molecular sequence of this clone aligns with the gene accession number as a point of reference only. However, individual transcript sequences of the same gene can differ through naturally occurring variations (e.g. polymorphisms), each with its own valid existence. This clone is substantially in agreement with the reference, but a complete review of all prevailing variants is recommended prior to use. [More info](#)

OTI Annotation: This clone was engineered to express the complete ORF with an expression tag. Expression varies depending on the nature of the gene.

Components: The ORF clone is ion-exchange column purified and shipped in a 2D barcoded Matrix tube containing 10ug of transfection-ready, dried plasmid DNA (reconstitute with 100 ul of water).

Reconstitution Method:

1. Centrifuge at 5,000xg for 5min.
2. Carefully open the tube and add 100ul of sterile water to dissolve the DNA.
3. Close the tube and incubate for 10 minutes at room temperature.
4. Briefly vortex the tube and then do a quick spin (less than 5000xg) to concentrate the liquid at the bottom.
5. Store the suspended plasmid at -20°C. The DNA is stable for at least one year from date of shipping when stored at -20°C.

RefSeq: [NM_001177683.1](#), [NP_001171154.1](#)

RefSeq Size: 1606 bp

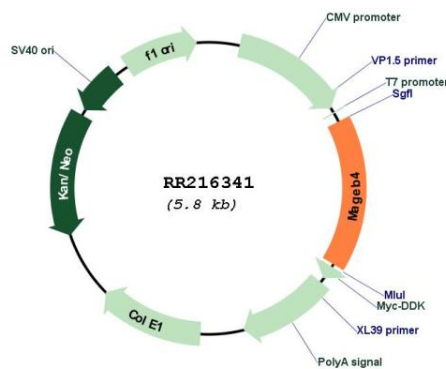
RefSeq ORF: 951 bp

Locus ID: 317271

Cytogenetics: Xq22

MW: 34.3 kDa

Product images:



Circular map for RR216341