

Product datasheet for **RR216319**

Apoe (NM_001270681) Rat Tagged ORF Clone

Product data:

Product Type: Expression Plasmids
Product Name: Apoe (NM_001270681) Rat Tagged ORF Clone
Tag: Myc-DDK
Symbol: Apoe
Synonyms: APOEA
Vector: pCMV6-Entry (PS100001)
E. coli Selection: Kanamycin (25 ug/mL)
Cell Selection: Neomycin
ORF Nucleotide Sequence: >RR216319 representing NM_001270681
Red=Cloning site Blue=ORF Green=Tags(s)

CTATAGGGCGGCCGGAATTCTGTCGACTGGATCCGGTACCGAGGAGATCTGCCGCCGCGATCGCC**GGCGC**
GCCC

ATGAAGGCTCTGTGGCCCTGCTGTTGGTCCCATTGCTGACAGGATGCCTGGCCGAGGGAGAGCTGGAGG
TGACAGATCAGCTCCAGGGCAAAGCGACCAACCCTGGGAGCAGGCCCTGAACCGCTTCTGGGATTACCT
GCGCTGGGTGCAGACGCTTTCTGACCAGGTCCAGGAAGAGCTGCAGAGCTCCAAGTACACAGGAACTG
ACGGTACTGATGGAGGACACTATGACGGAAGTAAAGGCATACAAAAAGGAGCTGGAGGAACAGCTGGGCC
CAGTGGCGGAGGAGACACGGGCCAGGCTGGCTAAAGAGGTGCAGGCGGCACAGGCCCGTCTGGGAGCTGA
CATGGAGGATCTACGCAACCGACTCGGGCAGTACCGCAACGAGGTAAACACCATGCTGGGCCAGAGCACA
GAGGAGCTGCGGTGCGCCTCTCCACACACCTGCGCAAGATGCGCAAGCGCCTGATGCGGGATGCGGATG
ATCTGCAGAAGCGCCTGGCGGTGTACAAGGCCGGGGCACAGGAGGGCGCCGAGCGCGGTGTGAGTGCTAT
CCGTGAGCGCCTGGGGCCACTGGTGGAGCAGGGTCGTAGCGCACAGCCAACCTAGGCGCTGGCGCCGCC
CAGCCCCTGCGGATCGCGCCAGGCTTTGAGTGACCGCATCCGAGGGCGGCTGGAGGAAGTGGCAACC
AGGCCCGAGACCGCCTAGAGGAGGTGCGTGAGCAGATGGAGGAGGTGCGCTCCAAGATGGAGGAGCAGAC
CCAGCAGATACGCTGCAGGCCGAGATCTTCCAGGCCCGCATCAAGGGCTGGTTCGAGCCGCTAGTGAA
GACATGCAGCGCCAGTGGCAAACCTAATGGAGAAGATACAGGCCTCTGTGGCTACCAACTCCATTGCCT
CCACCACAGTGCCCTGGAGAATCAA

ACGCGTACGCGGCCGCTCGAGCAGAAACTCATCTCAGAAGAGGATCTGGCAGCAAATGATATCCTGGATT
ACAAGGATGACGACGATAAGGTTTAA



[View online »](#)

Protein Sequence: >RR216319 representing NM_001270681
 Red=Cloning site Green=Tags(s)

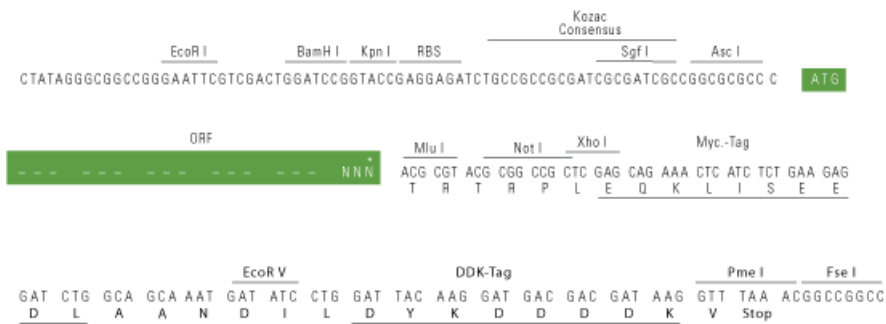
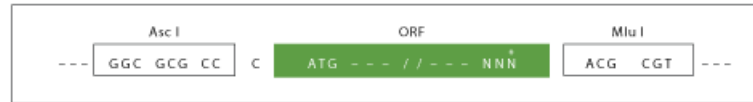
MKALWALLLVPLLTGCLAEGELEVTDQLPGQSDQPWEQALNRFWDYLRWVQTLSDQVQEELQSSQVTQEL
 TVLMEDTMTEVKAYKKELEEQLGPVAEETRARLAKEVQAAQARLGADMEDLRNRLGQYRNEVNTMLGQST
 EELRSRLSTHLRKMRLMRDADDLQKRLAVYKAGAQAERGVS AIRERLGPLVEQGRQRTANLGAGAA
 QPLRDRAQALSDRIRGRLEEVGNQARDRLEEVRQMEEVRSKMEEQTQQIRLQAEIFQARIKGGWFEPLVE
 DMQRQWANLMEKIQASVATNSIASTTVPLENQ

TRTRPLEQKLISEEDLAANDILDYKDDDDDKV

Restriction Sites: AscI-MluI

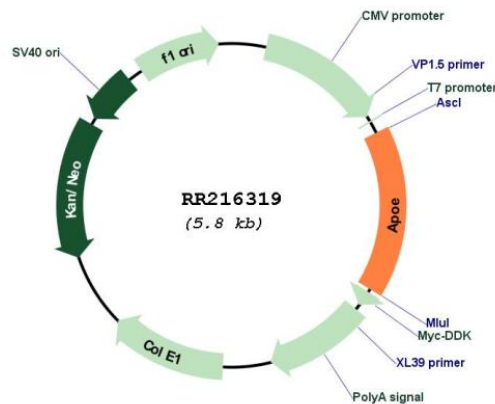
Cloning Scheme:

Cloning sites used for ORF Shuttling:



* The last codon before the Stop codon of the ORF

Plasmid Map:



ACCN: NM_001270681

ORF Size: 936 bp

OTI Disclaimer:	The molecular sequence of this clone aligns with the gene accession number as a point of reference only. However, individual transcript sequences of the same gene can differ through naturally occurring variations (e.g. polymorphisms), each with its own valid existence. This clone is substantially in agreement with the reference, but a complete review of all prevailing variants is recommended prior to use. More info
OTI Annotation:	This clone was engineered to express the complete ORF with an expression tag. Expression varies depending on the nature of the gene.
Components:	The ORF clone is ion-exchange column purified and shipped in a 2D barcoded Matrix tube containing 10ug of transfection-ready, dried plasmid DNA (reconstitute with 100 ul of water).
Reconstitution Method:	<ol style="list-style-type: none"> 1. Centrifuge at 5,000xg for 5min. 2. Carefully open the tube and add 100ul of sterile water to dissolve the DNA. 3. Close the tube and incubate for 10 minutes at room temperature. 4. Briefly vortex the tube and then do a quick spin (less than 5000xg) to concentrate the liquid at the bottom. 5. Store the suspended plasmid at -20°C. The DNA is stable for at least one year from date of shipping when stored at -20°C.
RefSeq:	NM_001270681.1 , NP_001257610.1
RefSeq Size:	1212 bp
RefSeq ORF:	939 bp
Locus ID:	25728
UniProt ID:	P02650
Cytogenetics:	1q21
MW:	35.8 kDa
Gene Summary:	plays a role in plasma lipoprotein transport [RGD, Feb 2006]