

Product datasheet for **RR216302**

Abhd11 (NM_001271180) Rat Tagged ORF Clone

Product data:

Product Type: Expression Plasmids
Product Name: Abhd11 (NM_001271180) Rat Tagged ORF Clone
Tag: Myc-DDK
Symbol: Abhd11
Synonyms: Abhd11l1; Wbscr21
Vector: pCMV6-Entry (PS100001)
E. coli Selection: Kanamycin (25 ug/mL)
Cell Selection: Neomycin
ORF Nucleotide Sequence: >RR216302 representing NM_001271180
Red=Cloning site Blue=ORF Green=Tags(s)

TTTGTAAATACGACTCACTATAGGGCGCCGGAAATTCGTCGACTGGATCCGGTACCGAGGAGATCTGCC
GCC**GCGATCGCC**

ATGTTCTGCTGGGCGGAGCTTGGAGGGTCCCCGTGGGACAATCGGTGCCTCCTCTCCAGGAGTTCGG
CGGTTCTGTACGTTTCAGTAGCAGCCGAGTAGTGGCCAAGGAAACGCTGATCCGAGGCCGCTGCCGCT
GTCCTATAATCTTCTAGATGGAGACGCGACACTCCAGCCATCGTCCTTTGCATGGACTCTTCGGCAGC
AAAAGCAACTTCAACTCCCTCGCCAAGGCGTTGGTTCAGAGGACCGGCAGGAGGGTCTGACAGTGGATG
CTCGGAATCATGGTGACAGTCCCCACAGTCCAGATGCAAGCTATGAGGCCATGAGTCAGGACCTCCAGGG
CCTCCTCCCCAGCTGGGCTGGTGCCAGTGTCTCGTTGGCCACAGCATGGGAGGAAAGACAGCCATG
CTACTGGCACTGCAGAGGCCAGATGTTGTGGAACGACTGGTTGTCGTAGACATAAGCCAGCAGGAACCA
CACCGGATCATACCTCGGAAACTTCATAGCAGCCATGAAGGCCGTTGATATCCAGAGAACATACCGCA
CTCCCGGCCCCGAAAACCTGGCGGATGAGCAGCTTAGCTCGGTTGTCAAGGAAGCGAGCGTTCGGCAGTTC
CTGCTCACTAACCTGGTGGAGGTGAATGGGCGCTTCTCCTGGAGAGTGAAGTGGATGCCCTAGCTCAGC
AGTTGGACAAGATTTTGACCTTCCACAGCAACTGAATCCTACCGGGGTCAACTCTTTCTGCTTGG
TGGAAATTCTCCCTACGTACCACCCAGCCACCCTCAGCGATTAGCGGGCTCTTCCCTCAAACCCAGATT
CAGACTGTGCTAATGCTGGCCACTGGTCCACAGCGACAACCCCAAGACTTCATGGATGCTGTATCA
GCTTCTTGCT

ACGCGTACGCGGCCGCTCGAGCAGAAACTCATCTCAGAAGAGGATCTGGCAGCAATGATATCCTGGATT
ACAAGGATGACGACGATAAGGTTTAA



[View online »](#)

Protein Sequence: >RR216302 representing NM_001271180
 Red=Cloning site Green=Tags(s)

MFCWARAWRVPRGTIGASSPRSSAVPVTFSSSRSSGQGNADPRPLPLSYNLLDGDATLPAIVLLHGLFGS
 KSNFNSLAKALVQRTGRRVLTVDARNHGDSHPSPDASYEAMSQDLQGLLPQLGLVPSVLVGHSMGGKTAM
 LLALQRPDVVERLVVVDISPAGTTPGSYLGNFIAAMKAVDIPENIPHSRARKLADEQLSSVVKEASVRQF
 LLTNLVEVNGRFSWRVNLDALAQQLDKILTFPQQLESYPGSTLFLLLGGNSPYVPPSHHSAIRRLFPQTQI
 QTVPNAGHWVHSDKPKQDFMDAVISFLA

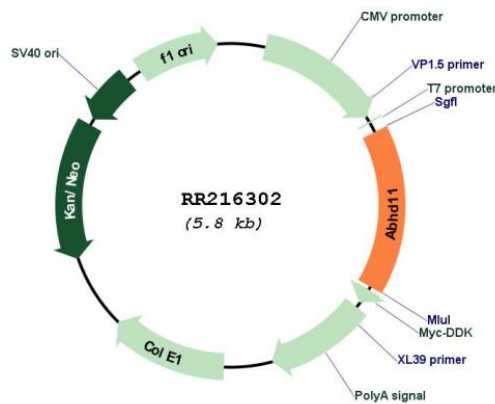
TRTRPLEQKLISEEDLAANDILDYKDDDDKV

Restriction Sites: SgfI-MluI

Cloning Scheme:



Plasmid Map:



ACCN: NM_001271180

ORF Size: 921 bp

OTI Disclaimer:	The molecular sequence of this clone aligns with the gene accession number as a point of reference only. However, individual transcript sequences of the same gene can differ through naturally occurring variations (e.g. polymorphisms), each with its own valid existence. This clone is substantially in agreement with the reference, but a complete review of all prevailing variants is recommended prior to use. More info
OTI Annotation:	This clone was engineered to express the complete ORF with an expression tag. Expression varies depending on the nature of the gene.
Components:	The ORF clone is ion-exchange column purified and shipped in a 2D barcoded Matrix tube containing 10ug of transfection-ready, dried plasmid DNA (reconstitute with 100 ul of water).
Reconstitution Method:	<ol style="list-style-type: none">1. Centrifuge at 5,000xg for 5min.2. Carefully open the tube and add 100ul of sterile water to dissolve the DNA.3. Close the tube and incubate for 10 minutes at room temperature.4. Briefly vortex the tube and then do a quick spin (less than 5000xg) to concentrate the liquid at the bottom.5. Store the suspended plasmid at -20°C. The DNA is stable for at least one year from date of shipping when stored at -20°C.
RefSeq:	NM_001271180.1 , NP_001258109.1
RefSeq Size:	1151 bp
RefSeq ORF:	924 bp
Locus ID:	360831
Cytogenetics:	12q12
MW:	33.2 kDa