

Product datasheet for **RR216258**

Nat1 (NM_001037316) Rat Tagged ORF Clone

Product data:

Product Type: Expression Plasmids
 Product Name: Nat1 (NM_001037316) Rat Tagged ORF Clone
 Tag: Myc-DDK
 Symbol: Nat1
 Synonyms: Nat
 Vector: pCMV6-Entry (PS100001)
 E. coli Selection: Kanamycin (25 ug/mL)
 Cell Selection: Neomycin
 ORF Nucleotide Sequence: >RR216258 representing NM_001037316
 Red=Cloning site Blue=ORF Green=Tags(s)

TTTTGTAATACGACTCACTATAGGGCGCCGGAATTCGTCGACTGGATCCGGTACCGAGGAGATCTGCC
 GCC**CGGATCGCC**

ATGGACATCGAAGCATACTTCGAAAGGATTGGTTACAAGAAGCTCAGTGAATAAGTTGGACTTGGCCACAT
 TAACTGAAGTTCTTCAACACCAGATGCGAGCAGTTCCTTTGAGAATCTTAGTATGCACTGTGGAGAAGC
 CATGTGTCTGGGCTTAGAGGCCACTTTTGACCACATAGTAAGGAAAAAGCGGGTGGTGTCTCCAG
 GTTAATCATCTGCTGACTGGGCTCTGACCAAAATGGGTTTTGAAACCACAATGTTGGGAGGATATGTTT
 ACATAACTCCAGTCAACAAATATAGCAGTGAAATGGTCCACCTTCTAGTACAAGTGACCATCAGTGACAG
 GAACTACATTGTGGATTCTGCCTATGGAAGCTCCTACCAGATGTGGGAGCCTCTGGAATTAACCTCAGGG
 AAGGATCAGCCTCAGGTGCCTGCCATCTTTCGTTTGACAGAAGAGAATGGAACCTGGTACTTGGACCAA
 TCAGAAGAGAGCAGGATGTTCCAAACCAAGAGTTTGTTAACTCGGACCTCCTTGAAGAGCAAATATCG
 AAAAATCTATTCCTTTACTCTTGAGCCCCGCACTATTGAGGATTTGAATATGTGAATACCTACCTTCAG
 ACATCGCCAGCCTCTGTGTTTGAAGCACATCGTTCCTTGCAGACCTCAGAAGGGGTTTGTGTT
 TAATTGGTCCACCCTTACAAGTAGGAGATTCAGTTATAAGGACAATGTAGATCTGGTTGAGTTTAAGAG
 TCTGACTGAGGAAGAAATAGAAGATGACTGAAAACCAACATTTGGCATTCTTTGGAGAAAAAGTTTGTG
 CCCAAACATGGCGAACTCGTTTTTACTATT

ACGCGTACGCGGCCGCTCGAGCAGAAACTCATCTCAGAAGAGGATCTGGCAGCAAATGATATCCTGGATT
 ACAAGGATGACGACGATAAGGTTTAA



[View online »](#)

Protein Sequence: >RR216258 representing NM_001037316
 Red=Cloning site Green=Tags(s)

MDIEAYFERIGYKNSVNKLDLATL TEVLQHQMRVAVPFENLSMHCGEAMCLGLEATFDHIVRKKRGGWCLQ
 VNHLLYWALTKMGFETTMLGGYVYITPVNKYSSEMVHLLVQVTISDRNYIVDSAYGSSYQMWEPLELTSG
 KDQPQVPAIFRLTEENGTWYLDQIRREQDVPNQEFVNSDLLEKSKYRKIYSFTLEPRTIEDFEYVNTYLQ
 TSPASVVFVSTSFCSLQTSEGVCLIGSTLTSRRFSYKDNVDLVEFKSLTEEEIEDVLKTTFGISLEKKFV
 PKHGELVFVTI

TRTRPLEQKLISEEDLAANDILDYKDDDDKV

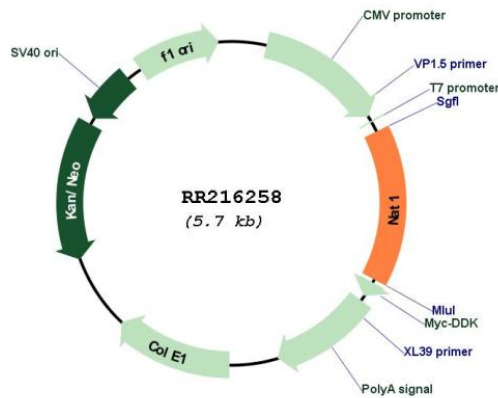
Restriction Sites:

Sgfl-MluI

Cloning Scheme:



Plasmid Map:



ACCN: NM_001037316

ORF Size: 870 bp

OTI Disclaimer:	The molecular sequence of this clone aligns with the gene accession number as a point of reference only. However, individual transcript sequences of the same gene can differ through naturally occurring variations (e.g. polymorphisms), each with its own valid existence. This clone is substantially in agreement with the reference, but a complete review of all prevailing variants is recommended prior to use. More info
OTI Annotation:	This clone was engineered to express the complete ORF with an expression tag. Expression varies depending on the nature of the gene.
Components:	The ORF clone is ion-exchange column purified and shipped in a 2D barcoded Matrix tube containing 10ug of transfection-ready, dried plasmid DNA (reconstitute with 100 ul of water).
Reconstitution Method:	<ol style="list-style-type: none">1. Centrifuge at 5,000xg for 5min.2. Carefully open the tube and add 100ul of sterile water to dissolve the DNA.3. Close the tube and incubate for 10 minutes at room temperature.4. Briefly vortex the tube and then do a quick spin (less than 5000xg) to concentrate the liquid at the bottom.5. Store the suspended plasmid at -20°C. The DNA is stable for at least one year from date of shipping when stored at -20°C.
RefSeq:	NM_001037316.1 , NP_001032393.1
RefSeq Size:	1741 bp
RefSeq ORF:	873 bp
Locus ID:	116631
UniProt ID:	P50297
Cytogenetics:	16p14
MW:	33.4 kDa
Gene Summary:	enzyme which acetylates both arylamines and arylalkylamines [RGD, Feb 2006]