

Product datasheet for **RR216252**

Ldb3 (NM_001277158) Rat Tagged ORF Clone

Product data:

Product Type: Expression Plasmids
Product Name: Ldb3 (NM_001277158) Rat Tagged ORF Clone
Tag: Myc-DDK
Symbol: Ldb3
Synonyms: RGD1564875; ZASP
Vector: pCMV6-Entry (PS100001)
E. coli Selection: Kanamycin (25 ug/mL)
Cell Selection: Neomycin
ORF Nucleotide Sequence: >RR216252 representing NM_001277158
Red=Cloning site Blue=ORF Green=Tags(s)

TTTTGTAATACGACTCACTATAGGGCGGCCGGAATTCGTCGACTGGATCCGGTACCGAGGAGATCTGCC
GCC**GCGATCGCC**

ATGTCTTACAGTGTGACTCTGACTGGGCCTGGGCCCTGGGGCTTCCGTCTGCAGGGAGGCAAGGACTTCA
ATATGCCCCTCACTATCTCCCGGATCACCCAGGCAGCAAGGCGGCCAGTCCCAGCTCAGTCAAGGAGA
TCTTGTGGTGGCCATTGATGGAGTCAACACAGACACCATGACCCACCTGGAGGCCAGAACAAGATCAAG
TCGGCCAGCTACAACCTGAGCCTCACTCTGCAGAAGTCCAAGCGTCTATCCCCATCTCCAGCAGCAC
CCCCTATCCAGTCCCATTGCCAGTGATCCCCACAAAAGGTGGTAGCCAATTCTCCAGCCAACGCCGA
CTACCAGGAACGCTTCAACCCAGTGTCTGAAGGACTCAGCCCTGTCCACCCACAAGCCCATGAGGTG
AAGGGCTTGGGAGGCAAAGCTACCATCATCCACGCTCAGTACAACACCCCAATCAGCATGTACTCTCAGG
ACGCCATCATGGACGCCATCGCTGGGCAGGCCAGGCCAGGGCAGTGACTTCAGTGGGGCGTCTCCGCT
GGCGAGCCTCCCTGTGAAAGACCTGGCGGTGGACAGCGCCTCTCCCGTGTACCAGGCTGTGATCAAACC
CAAAGCAAGCCAGAAGATGAGGCTGATGAGTGGGCCCGCGTCTCCAACCTGCAGTCTCGTTCCTTCC
GAATCTTGGCCAGATGACCGGGACAGAATACATGCAAGACCTGATGAGGAAGCTCTGCGAAGGTCAAG
GGAAAGGTTTGAACGGAACGTAACAGCCCTCGTTTTGCCAAGTTCGCAACTGGCACCATGGCCTTTCA
GCCCAAATCCTTAATGTTAAAGC

ACGCGTACGCGGCCGCTCGAGCAGAACTCATCTCAGAAGAGGATCTGGCAGCAAATGATATCCTGGATT
ACAAGGATGACGACGATAAGGTTTAA



[View online »](#)

Protein Sequence: >RR216252 representing NM_001277158
 Red=Cloning site Green=Tags(s)

MSYSVTLTGPWPWFRLQGGKDFNMPLTISRITPGSKAAQSQLSQGDLVVAIDGVNTDTMTHLEAQNKIK
 SASYNLSLTLQSKRPIPISTTAPPIQSPLPVIPHQKVVANSPANADYQERFNPSVLKDSALSTHKPIEV
 KGLGGKATIIHAQYNTPI SMYSQDAIMDAIAGQAQAQGSDFSGASPLASLPVKDLAVDSASPVYQAVIKT
 QSKPEDEAEWARRSSNLQSRFRILAQMTGTEYMQDPDEEALRRSRERFETERNSPRFAKLRNWHHGLS
 AQILNVKS

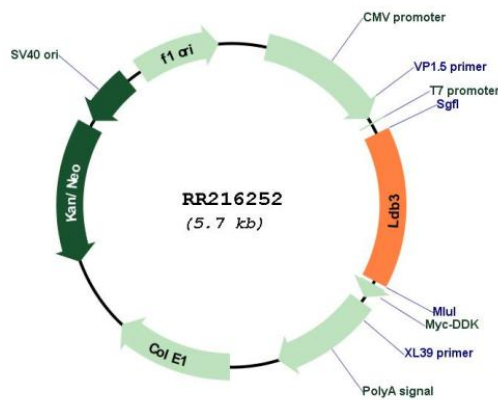
TRTRPLEQKLISEEDLAANDILDYKDDDDKV

Restriction Sites: SgfI-MluI

Cloning Scheme:



Plasmid Map:



ACCN: NM_001277158

ORF Size: 864 bp

OTI Disclaimer:	The molecular sequence of this clone aligns with the gene accession number as a point of reference only. However, individual transcript sequences of the same gene can differ through naturally occurring variations (e.g. polymorphisms), each with its own valid existence. This clone is substantially in agreement with the reference, but a complete review of all prevailing variants is recommended prior to use. More info
OTI Annotation:	This clone was engineered to express the complete ORF with an expression tag. Expression varies depending on the nature of the gene.
Components:	The ORF clone is ion-exchange column purified and shipped in a 2D barcoded Matrix tube containing 10ug of transfection-ready, dried plasmid DNA (reconstitute with 100 ul of water).
Reconstitution Method:	<ol style="list-style-type: none"> 1. Centrifuge at 5,000xg for 5min. 2. Carefully open the tube and add 100ul of sterile water to dissolve the DNA. 3. Close the tube and incubate for 10 minutes at room temperature. 4. Briefly vortex the tube and then do a quick spin (less than 5000xg) to concentrate the liquid at the bottom. 5. Store the suspended plasmid at -20°C. The DNA is stable for at least one year from date of shipping when stored at -20°C.
RefSeq:	<u>NM_001277158.1, NP_001264087.1</u>
RefSeq Size:	1461 bp
RefSeq ORF:	867 bp
Locus ID:	498587
Cytogenetics:	16p15
MW:	31.4 kDa