

Product datasheet for **RR216214**

Nkx2-2 (NM_001191904) Rat Tagged ORF Clone

Product data:

Product Type:	Expression Plasmids
Product Name:	Nkx2-2 (NM_001191904) Rat Tagged ORF Clone
Tag:	Myc-DDK
Symbol:	Nkx2-2
Vector:	pCMV6-Entry (PS100001)
E. coli Selection:	Kanamycin (25 ug/mL)
Cell Selection:	Neomycin
ORF Nucleotide Sequence:	>RR216214 representing NM_001191904 Red=Cloning site Blue=ORF Green=Tags(s)

TTTTGTAATACGACTCACTATAGGGCGGCCGGAATTCGTCGACTGGATCCGGTACCGAGGAGATCTGCC
GCC**CGATCGCC**

ATGTCGCTGACCAACACAAAGACGGGGTTTTTCAGTCAAGGACATCTTGGACCTTCCGGACACCAACGATG
AAGAAGGCTCGGTGGCCGAAGGGCCGAGGAGGAGAACGAAGGGCCGAGCCGGCCAAGAGGGCCGGCC
GCTAGGGCAGAGCGCCTTGATGCTGTGCAGAGCCTGCCCTTAAGAGTCTTTCTACGACAGCAGCGAC
AACCCCTACACTCGCTGGCTGGCCAGCACCAGGGCCTCCAATACTCCCTGCACGACTGGCGGCGAGCG
CTCCCCCAAGACTCGAGCTCCAAGTCCCAGAGCCCTCGGCTGACGAGTCACCGGACAATGACAAGGA
GACCCAGGGCGGCGGGGGACGCAGGCAAGAAGCGGAAGCGCCGAGTGCTCTTCTCCAAAGCGCAGACC
TACGAGCTGGAGCGGCGCTTCCGGCAGCAGCGGTACCTGTGGCGCCGAGCGGAGCACCTGGCCAGCC
TCATCCGCTCACGCCACGCAGGTCAAGATCTGGTTCCAAAACCATCGCTACAAGATGAAACGTGCCCG
GGCTGAGAAAGGTATGGAGGTGACGCTCTACCCTCGCCGCGCGTGGCAGTGCCGGTCTTGGTCAGG
GACGGCAAACCGTGCCACGCGCTCAAAGCCCAGGACCTGGCAGCTGCCACCTTCCAGGCAGGCATCCCCT
TTCCGCCTACAGCGCGCAGTCGCTGCAGCACATGCAATACAACGCCAGTACAGCTCGGCCAGCACCCC
CCAGTACCCGACAGCACACCCCTGGTCCAGGCCAGCAGTGGACTTGG

ACGCGTACGCGGCCGCTCGAGCAGAAACTCATCTCAGAAGAGGATCTGGCAGCAAATGATATCCTGGATT
ACAAGGATGACGACGATAAGGTTTAA



[View online »](#)

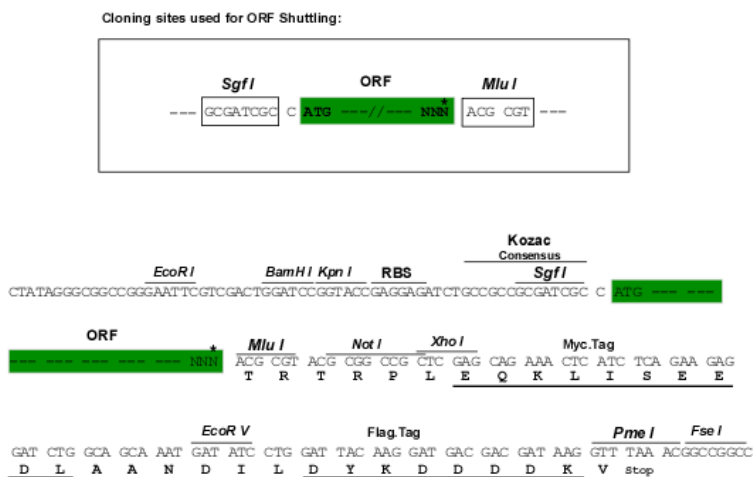
Protein Sequence: >RR216214 representing NM_001191904
Red=Cloning site Green=Tags(s)

MSLTNTKTGFSVKDILDLPDTNDEEGSVAEGPEEENEGPEPAKRAGPLGQSALDAVQSLPLKSPFYDSSD
 NPYTRWLASTEGLQYSLHGLAASAPPQDSSSKSPEPSADESPDNDKETQGGGDAGKKRKRRLVFSKAQT
 YELERRFRQRYLSAPEREHLASLIRLTPTQVKIWFQNHRYKMKRARAEEKGMEVTLPLSPRRVAVPVLVR
 DGKPCHALKAQDLAAATFQAGIPFSAYSAQSLQHMQYNAQYSSASTPQYPTAHLPLVQAQQWTW

TRTRPLEQKLISEEDLAANDILDYKDDDDKV

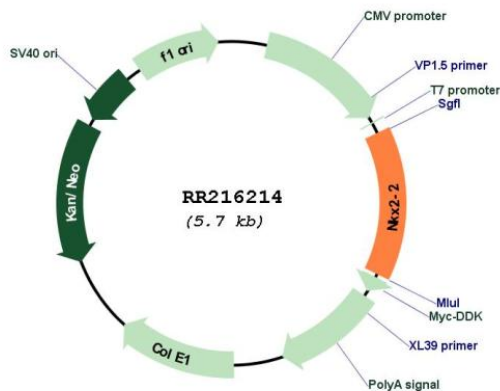
Restriction Sites: SgfI-MluI

Cloning Scheme:



* The last codon before the Stop codon of the ORF

Plasmid Map:



ACCN: NM_001191904

ORF Size: 819 bp

OTI Disclaimer:	The molecular sequence of this clone aligns with the gene accession number as a point of reference only. However, individual transcript sequences of the same gene can differ through naturally occurring variations (e.g. polymorphisms), each with its own valid existence. This clone is substantially in agreement with the reference, but a complete review of all prevailing variants is recommended prior to use. More info
OTI Annotation:	This clone was engineered to express the complete ORF with an expression tag. Expression varies depending on the nature of the gene.
Components:	The ORF clone is ion-exchange column purified and shipped in a 2D barcoded Matrix tube containing 10ug of transfection-ready, dried plasmid DNA (reconstitute with 100 ul of water).
Reconstitution Method:	<ol style="list-style-type: none">1. Centrifuge at 5,000xg for 5min.2. Carefully open the tube and add 100ul of sterile water to dissolve the DNA.3. Close the tube and incubate for 10 minutes at room temperature.4. Briefly vortex the tube and then do a quick spin (less than 5000xg) to concentrate the liquid at the bottom.5. Store the suspended plasmid at -20°C. The DNA is stable for at least one year from date of shipping when stored at -20°C.
RefSeq:	NM_001191904.1 , NP_001178833.1
RefSeq Size:	1393 bp
RefSeq ORF:	822 bp
Locus ID:	366214
Cytogenetics:	3q41
MW:	30.2 kDa