

## Product datasheet for **RR216182**

### Tnnt1 (NM\_001277260) Rat Tagged ORF Clone

#### Product data:

**Product Type:** Expression Plasmids  
**Product Name:** Tnnt1 (NM\_001277260) Rat Tagged ORF Clone  
**Tag:** Myc-DDK  
**Symbol:** Tnnt1  
**Synonyms:** Fang2; sTnT; tnTs  
**Vector:** pCMV6-Entry (PS100001)  
**E. coli Selection:** Kanamycin (25 ug/mL)  
**Cell Selection:** Neomycin  
**ORF Nucleotide Sequence:** >RR216182 representing NM\_001277260  
**Red**=Cloning site **Blue**=ORF **Green**=Tags(s)

TTTTGTAATACGACTCACTATAGGGCGCCGGAATTCGTCGACTGGATCCGGTACCGAGGAGATCTGCC  
GCC**CGGATCGCC**

ATGTCAGACACCGAAGAACAAGAATATGAGGAGGAACAGGCAGAAGATGAGGAAGCAGTGGAGGAAGAAG  
CCCCGAGGAGCCGGAGCCGGTGGCAGAGCGAGAAGAGCGCCCCAAACCCAGCCGTCCTGTGGTTCTCTCC  
TTTGATTCCTCCGAAGATTCCAGAAGGGGAGCGTGTGGACTTTGATGACATTCACCGGAAGCGCATGGAG  
AAAGACTTACTGGAGCTGCAGACGCTCATCGATGTGCACTTTGAGCAGCGAAAAAGGAAGAGGAGGAAC  
TCATTGCGCTAAAAGACCGTATTGAGAGGCGTCGCGCAGAGAGAGCTGAGCAACAGCGCTTCAGAACAGA  
AAAGGAGCGAGAACGCCAGGCCAAGCTGGCGGAGGAGAAGATGCGGAAGGAGGAGGAGGAGGCAAGAAG  
AGAGCAGAGGATGACGCCAAAAAGAAGAAGTTCTGTCCAACATGGGGGCTCATTTTGGGGGCTACCTGG  
TCAAGGCAGAACAGAAGCGTGGGAAGCGACAGACTGGTCGGGAGATGAACTCAGGATCCTGTCTGAGAG  
GAAAAAGCCCTTGAACATCGACTACATGGGGGAGGACCAGCTCCGGGAGAAGGCCAGGAGCTGTGAGAA  
TGGATCCACCAGCTGGAATCGGAGAAATTTGACCTGATGGAGAAATTGAAGCAACAGAAATATGAGATCA  
ATGTGCTGTACAACCGCATCAGTCATGCCAGAAATTCGAAAGGGGGCTGGGAAGGGTTCGAGTTGGAGG  
CCGCTGGAAG

**ACGCGT**ACGCGGCCGCTCGAGCAGAACTCATCTCAGAAGAGGATCTGGCAGCAAATGATATCCTGGATT  
ACAAGGATGACGACGATAAGGTTTAA



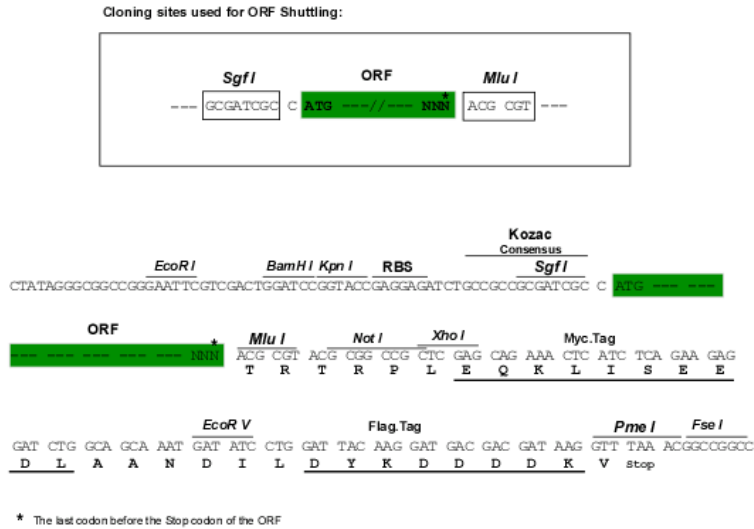
Protein Sequence: >RR216182 representing NM\_001277260  
 Red=Cloning site Green=Tags(s)

MSDTEEQEYEEEAQAEDEEAVEEEAPEEPEPVAEREERPKPSRPVVPPLIPPKIPEGERVDFDDIHRKRME  
 KDLELQTLIDVHFEQRKKEEELIALKDRIERRRAERAEQQRFRTEKERERQAKLAEEKMRKEEEEAKK  
 RAEDDAKKKKVL SNMGAHFGGYLVKAEQKRGKRQTGREMKLRILSERKKPLNIDYMGEDQLREKAQELSE  
 WIHQLESEKFDLMEKLRKQKYEINVL YNRISHAQKFRKGAGKGRVGGRWK

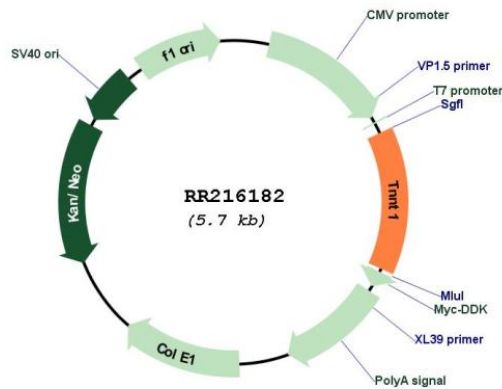
TRTRPLEQKLISEEDLAANDILDYKDDDDKV

Restriction Sites: SgfI-MluI

Cloning Scheme:



Plasmid Map:



ACCN: NM\_001277260  
 ORF Size: 780 bp

<b>OTI Disclaimer:</b>	The molecular sequence of this clone aligns with the gene accession number as a point of reference only. However, individual transcript sequences of the same gene can differ through naturally occurring variations (e.g. polymorphisms), each with its own valid existence. This clone is substantially in agreement with the reference, but a complete review of all prevailing variants is recommended prior to use. <a href="#">More info</a>
<b>OTI Annotation:</b>	This clone was engineered to express the complete ORF with an expression tag. Expression varies depending on the nature of the gene.
<b>Components:</b>	The ORF clone is ion-exchange column purified and shipped in a 2D barcoded Matrix tube containing 10ug of transfection-ready, dried plasmid DNA (reconstitute with 100 ul of water).
<b>Reconstitution Method:</b>	<ol style="list-style-type: none"><li>1. Centrifuge at 5,000xg for 5min.</li><li>2. Carefully open the tube and add 100ul of sterile water to dissolve the DNA.</li><li>3. Close the tube and incubate for 10 minutes at room temperature.</li><li>4. Briefly vortex the tube and then do a quick spin (less than 5000xg) to concentrate the liquid at the bottom.</li><li>5. Store the suspended plasmid at -20°C. The DNA is stable for at least one year from date of shipping when stored at -20°C.</li></ol>
<b>RefSeq:</b>	<a href="#">NM_001277260.1</a> , <a href="#">NP_001264189.1</a>
<b>RefSeq Size:</b>	941 bp
<b>RefSeq ORF:</b>	783 bp
<b>Locus ID:</b>	171409
<b>UniProt ID:</b>	<a href="#">Q7TNB2</a>
<b>Cytogenetics:</b>	1q12
<b>MW:</b>	31.1 kDa
<b>Gene Summary:</b>	human homolog plays a role in the calcium sensitivity of contraction in skeletal muscle [RGD, Feb 2006]