

## Product datasheet for **RR216152**

### **Bdnf (NM\_001270638) Rat Tagged ORF Clone**

#### Product data:

**Product Type:** Expression Plasmids  
**Product Name:** Bdnf (NM\_001270638) Rat Tagged ORF Clone  
**Tag:** Myc-DDK  
**Symbol:** Bdnf  
**Vector:** pCMV6-Entry (PS100001)  
**E. coli Selection:** Kanamycin (25 ug/mL)  
**Cell Selection:** Neomycin  
**ORF Nucleotide Sequence:** >RR216152 representing NM\_001270638  
Red=Cloning site Blue=ORF Green=Tags(s)

TTTTGTAATACGACTCACTATAGGGCGGCCGGAATTCGTCGACTGGATCCGGTACCGAGGAGATCTGCC  
GCC**CGATCGCC**

ATGACCATCCTTTTCCTTACTATGGTTATTTCACTTCGGTTGCATGAAGGCTGCGCCCATGAAAGAAG  
CAAACGTCACGACGACAAGGCAACTTGGCCTACCCAGCTGTGCGGACCCATGGGACTCTGGAGAGCGTGAA  
TGGGCCACGGCAGGTTTCGAGAGGTCTGACGACGACGTCCTGGCTGACACTTTTGAGCAGTGATCGAA  
GAGCTGCTGGATGAGGACGAGAAGGTTTCGGCCCAACGAAGAAAACCATAAGGACGCGGACTTGTACTT  
CCCGGGTATGCTCAGCAGTCAAGTGCCTTTGGAGCCTCCTCTGCTCTTTCTGCTGGAGGAATACAAAA  
TTACCTGGATGCCGAAACATGTCTATGAGGGTTCGGCGCCACTCCGACCCCGCCCGCGTGGGAGCTG  
AGCGTGTGTGACAGTATTAGCGAGTGGGTACAGCGGCAGATAAAAAGACTGCAGTGGACATGTCCGGT  
GGACGGTACAGTCTGGAGAAAGTCCCGGTATCAAAAGGCCAACTGAAGCAATATTTCTACGAGACCAA  
GTGTAATCCCATGGTTACACGAAGGAAGGCTGCAGGGGCATAGACAAAAGGCACTGGAATCGCAATGC  
CGAACTACCAATCGTATGTTCCGGCCCTTACTATGGATAGCAAAAAGAGAATTGGCTGGCGGTTTATAA  
GGATAGACTTCTGTGTATGTACTGACCATTAAGGGGAAGA

**ACGCGT**ACGCGGCCGCTCGAGCAGAAACTCATCTCAGAAGAGGATCTGGCAGCAAATGATATCCTGGATT  
ACAAGGATGACGACGATAAGGTTTAA

**Protein Sequence:** >RR216152 representing NM\_001270638  
Red=Cloning site Green=Tags(s)

MTILFLTMVISYFGCMKAAPMKEANVHGQGNLAYPAVRTHGTLESVNGPRAGSRGLTTTSLADTFEHVIE  
ELLDEDQKVRPNEENHKDADLYTSRVMLSSQVPLEPPLFLLEEYKNYLDAAANMSMRVRRHSDPARRGEL  
SVCDISSEWVTAADKKTAVDMSGGTVTVLEKVPVSKGQLKQFYETKCNPMGYTKEGCRGIDKRHWNSQC  
RTTQSYVRALTMDSKKRIGWRFIRIDTSCVCTLTIKGR

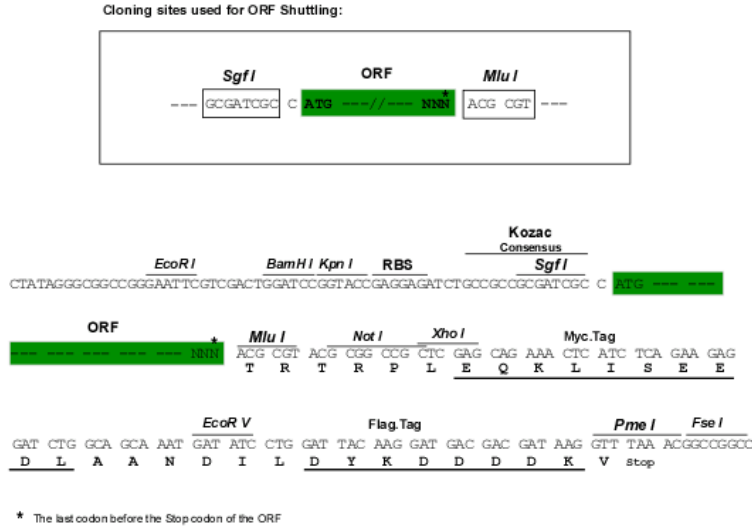
**TR**TRPLEQKLISEEDLAANDILDYKDDDDKV



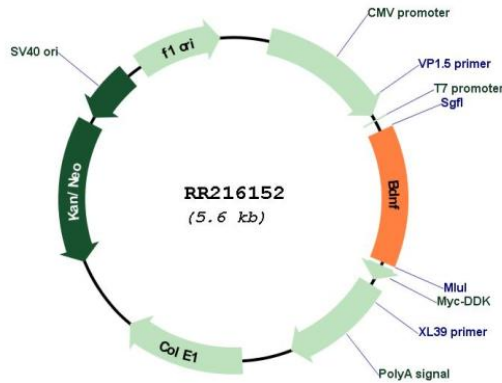
[View online »](#)

Restriction Sites: SgfI-MluI

Cloning Scheme:



Plasmid Map:



ACCN: NM\_001270638

ORF Size: 747 bp

OTI Disclaimer: The molecular sequence of this clone aligns with the gene accession number as a point of reference only. However, individual transcript sequences of the same gene can differ through naturally occurring variations (e.g. polymorphisms), each with its own valid existence. This clone is substantially in agreement with the reference, but a complete review of all prevailing variants is recommended prior to use. [More info](#)

OTI Annotation: This clone was engineered to express the complete ORF with an expression tag. Expression varies depending on the nature of the gene.

<b>Components:</b>	The ORF clone is ion-exchange column purified and shipped in a 2D barcoded Matrix tube containing 10ug of transfection-ready, dried plasmid DNA (reconstitute with 100 ul of water).
<b>Reconstitution Method:</b>	<ol style="list-style-type: none"><li>1. Centrifuge at 5,000xg for 5min.</li><li>2. Carefully open the tube and add 100ul of sterile water to dissolve the DNA.</li><li>3. Close the tube and incubate for 10 minutes at room temperature.</li><li>4. Briefly vortex the tube and then do a quick spin (less than 5000xg) to concentrate the liquid at the bottom.</li><li>5. Store the suspended plasmid at -20°C. The DNA is stable for at least one year from date of shipping when stored at -20°C.</li></ol>
<b>RefSeq:</b>	<u><a href="#">NM_001270638.1</a></u> , <u><a href="#">NP_001257567.1</a></u>
<b>RefSeq Size:</b>	3751 bp
<b>RefSeq ORF:</b>	750 bp
<b>Locus ID:</b>	24225
<b>UniProt ID:</b>	<u><a href="#">P23363</a></u>
<b>Cytogenetics:</b>	3q34
<b>MW:</b>	28.1 kDa
<b>Gene Summary:</b>	plays a role in the development of hippocampal long term potentiation; involved in regulation of synaptic plasticity [RGD, Feb 2006]