

Product datasheet for **RR216071**

Prrg1 (NM_001191888) Rat Tagged ORF Clone

Product data:

Product Type: Expression Plasmids
Product Name: Prrg1 (NM_001191888) Rat Tagged ORF Clone
Tag: Myc-DDK
Symbol: Prrg1
Synonyms: RGD1561320
Vector: pCMV6-Entry (PS100001)
E. coli Selection: Kanamycin (25 ug/mL)
Cell Selection: Neomycin
ORF Nucleotide Sequence: >RR216071 representing NM_001191888
Red=Cloning site Blue=ORF Green=Tags(s)

TTTTGTAATACGACTCACTATAGGGCGGCCGGAATTCGTCGACTGGATCCGGTACCGAGGAGATCTGCC
GCC**CGATCGCC**

ATGCATGTTTTCTCACGGGAGAAAAAGCAAACCTCAGTCCTAAAACGCTACCCAAGAGCAAATGGGCTTT
TTGAAGAAATAAGACAGGGCAACATCGAGCGTGAGTGACAGAGAAGAAGTCTGCACATATGAAGAAGCCAG
AGAGGCTTTTAAAATCATGAAAAACCAAGGAGTTTTGGAGCACCTACACAAAAGCACAAACAGGAGAA
ACCAACAGAGGAAGTACTGGTTTCAATTTTATCTTACTTTTCCACTAATCTTTGGCCTCTTCATTATTC
TCCTTGTCATTTTCTTAATCTGGAGATGCTTTCTAAGAAACAAAACCTCGGAGACAGACAGTGACTGAAAG
CCACATTCCTTTCCCTCAACATCTTAACATCATTACTCCACCTCCTCCACCAGATGAAGTCTTTGATAGC
AGTGGATTGTCTCCAGGGTTTTTGGAAATATGTTGTTGGGCGCTCAGATTCAGTTTCCACTCGCCTTTCCA
ACTGTGATCCCCACCGACATACGAGGAAGCCACTGGCCAGGTGAATCTGAGAAGGAGTGAACAGAAACC
TCATTTAGACCCACCACCAGAATATGAGGATATAGTCAACTCCAGTTCAGCCAGTGCCATCGCTATGGTG
CCTGTGGTCACCACCATCAA

ACGCGTACGCGGCCGCTCGAGCAGAAACTCATCTCAGAAGAGGATCTGGCAGCAAATGATATCCTGGATT
ACAAGGATGACGACGATAAGGTTTAA



Protein Sequence: >RR216071 representing NM_001191888
 Red=Cloning site Green=Tags(s)

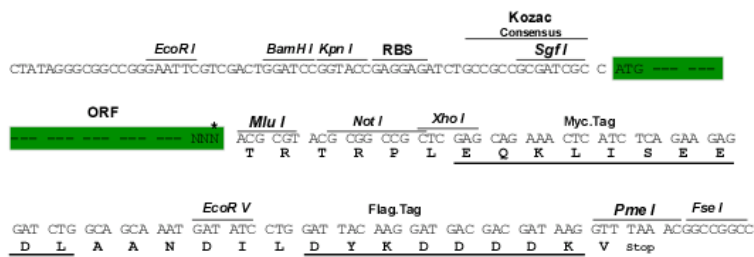
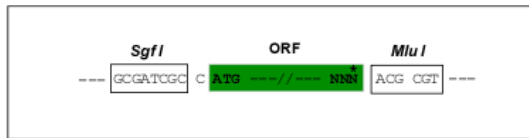
MHVFLTGEKANSVLKRYPRANGLFEEIRQGNIERECREEVCTYEEAREAFENHEKTKFWSYTYKAQQGE
 TNRGSDWFQFYLFPLIFGLFIILLVIFLIWRFCFLRNKTRRQTVTESHIPFPQHLNIITPPPPPDEVFDS
 SGLSPGFLEYVGRSDSVSTRLSNCDPPPTYEEATGQVNLRRSETEPHLDPPEYEDIVNSSASAIAMV
 PVVTTIK

TRTRPLEQKLISEEDLAANDILDYKDDDDKV

Restriction Sites: Sgfl-MluI

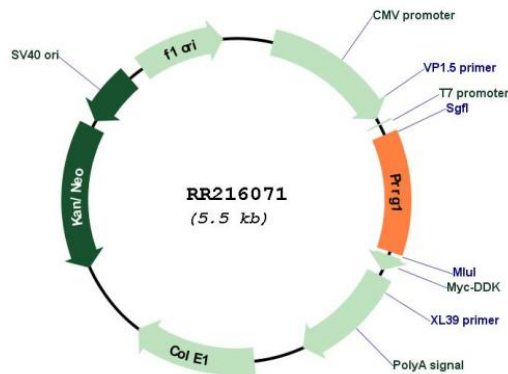
Cloning Scheme:

Cloning sites used for ORF Shuttling:



* The last codon before the Stop codon of the ORF

Plasmid Map:



ACCN: NM_001191888

ORF Size: 651 bp

OTI Disclaimer:	The molecular sequence of this clone aligns with the gene accession number as a point of reference only. However, individual transcript sequences of the same gene can differ through naturally occurring variations (e.g. polymorphisms), each with its own valid existence. This clone is substantially in agreement with the reference, but a complete review of all prevailing variants is recommended prior to use. More info
OTI Annotation:	This clone was engineered to express the complete ORF with an expression tag. Expression varies depending on the nature of the gene.
Components:	The ORF clone is ion-exchange column purified and shipped in a 2D barcoded Matrix tube containing 10ug of transfection-ready, dried plasmid DNA (reconstitute with 100 ul of water).
Reconstitution Method:	<ol style="list-style-type: none">1. Centrifuge at 5,000xg for 5min.2. Carefully open the tube and add 100ul of sterile water to dissolve the DNA.3. Close the tube and incubate for 10 minutes at room temperature.4. Briefly vortex the tube and then do a quick spin (less than 5000xg) to concentrate the liquid at the bottom.5. Store the suspended plasmid at -20°C. The DNA is stable for at least one year from date of shipping when stored at -20°C.
RefSeq:	NM_001191888.1 , NP_001178817.1
RefSeq Size:	1310 bp
RefSeq ORF:	654 bp
Locus ID:	363472
Cytogenetics:	Xq21
MW:	24.9 kDa