

Product datasheet for **RR216061**

Park7 (NM_001277249) Rat Tagged ORF Clone

Product data:

Product Type: Expression Plasmids
Product Name: Park7 (NM_001277249) Rat Tagged ORF Clone
Tag: Myc-DDK
Symbol: Park7
Synonyms: CAP1; DJ-1; Dj1; SP22
Vector: pCMV6-Entry (PS100001)
E. coli Selection: Kanamycin (25 ug/mL)
Cell Selection: Neomycin
ORF Nucleotide Sequence: >RR216061 representing NM_001277249
Red=Cloning site Blue=ORF Green=Tags(s)

TTTTGTAATACGACTCACTATAGGGCGGCCGGAATTCGTCGACTGGATCCGGTACCGAGGAGATCTGCC
GCC**CGATCGCC**

ATGGCATCCAAAAGAGCTCTGGTCATCCTAGCCAAAGGAGCAGAGGAGATGGAGACAGTGATTCTGTGG
ACATCATGCGGCGAGCTGGGATTAAGTCACCGTTGCAGGCTTGGCTGGGAAGGACCCCGTGCAGTGTAG
CCGTGATGTAGTATTTGTCCGGATACCACTCTGGAAGAAGCAAAAACACAGGGACCATACGATGTGGTT
GTTCTTCCAGGAGAAATCTGGGTGCACAGAATTATCTGAGTCGGCTTTGGTGAAGGAGATCCTCAAGG
AGCAGGAGAACAGGAAGGGCCTCATAGCTGCCATCTGTGCGGGTCTACGGCCCTGCTGGCTCACGAAGT
AGGCTTTGGATGCAAGGTTACATCGCACCCATTGGCTAAGGACAAAATGATGAACGGCAGCTGCTCGCAG
GACACAGAGAAATCAAGCTGGGCTGACCTGAAAATTCTCCTGGTGTGCGAGCGTTCGTAGCGCAGGCCCT
CTGGGGGAAGAAAAGTCTCAAGGATATTACAGCAAGCCCTCCATGCGACGGTACTGACCTGCCAGTCAA
GAGGAGCTGTGAAGTTACAGGGATAGCCAAACTGAAGGCCCGCTCTGCAGGAGGGGGTTCATGCTTG
ACACTGAGAGCC

ACGCGTACGCGGCCGCTCGAGCAGAAACTCATCTCAGAAGAGGATCTGGCAGCAAATGATATCCTGGATT
ACAAGGATGACGACGATAAGGTTTAA



[View online »](#)

Protein Sequence: >RR216061 representing NM_001277249
 Red=Cloning site Green=Tags(s)

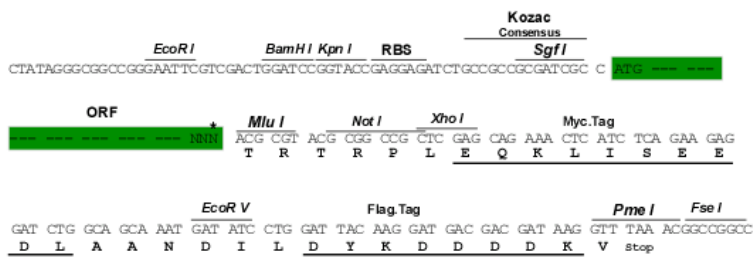
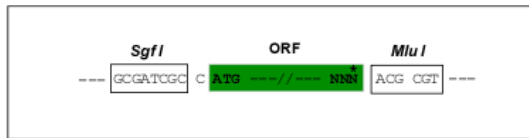
MASKRALVILAKGAEEMETVIPVDIMRRAGIKVTVAGLAGKDPVQCSRDVVICPDTSLLEEAKTQGPYDVV
 VLPGGNLGAQNLSESALVKEILKEQENRKGLIAAICAGPTALLAHEVFGGCKVTSHPLAKDKMMNGSCSQ
 DTEKSSWADLKTSSWCRAFVAQASGGRKVLKDITASPPCDGTDLPVKRSCEGYRDSQTLKARSAGGGSCSL
 TLRA

TRTRPLEQKLISEEDLAANDILDYKDDDDKV

Restriction Sites: Sgfl-MluI

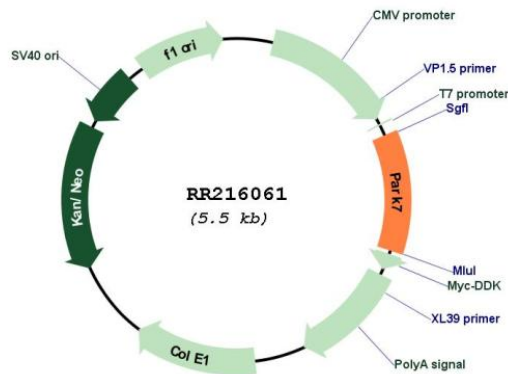
Cloning Scheme:

Cloning sites used for ORF Shuttling:



* The last codon before the Stop codon of the ORF

Plasmid Map:



ACCN: NM_001277249

ORF Size: 642 bp

OTI Disclaimer:	The molecular sequence of this clone aligns with the gene accession number as a point of reference only. However, individual transcript sequences of the same gene can differ through naturally occurring variations (e.g. polymorphisms), each with its own valid existence. This clone is substantially in agreement with the reference, but a complete review of all prevailing variants is recommended prior to use. More info
OTI Annotation:	This clone was engineered to express the complete ORF with an expression tag. Expression varies depending on the nature of the gene.
Components:	The ORF clone is ion-exchange column purified and shipped in a 2D barcoded Matrix tube containing 10ug of transfection-ready, dried plasmid DNA (reconstitute with 100 ul of water).
Reconstitution Method:	<ol style="list-style-type: none">1. Centrifuge at 5,000xg for 5min.2. Carefully open the tube and add 100ul of sterile water to dissolve the DNA.3. Close the tube and incubate for 10 minutes at room temperature.4. Briefly vortex the tube and then do a quick spin (less than 5000xg) to concentrate the liquid at the bottom.5. Store the suspended plasmid at -20°C. The DNA is stable for at least one year from date of shipping when stored at -20°C.
RefSeq:	NM_001277249.1 , NP_001264178.1
RefSeq Size:	1448 bp
RefSeq ORF:	645 bp
Locus ID:	117287
Cytogenetics:	5q36
MW:	22.5 kDa
Gene Summary:	displays a specific localization pattern to the anterior-ventral surface of the equatorial segment; may play a role in sperm-egg interactions and fertilization [RGD, Feb 2006]