

Product datasheet for **RR215986**

Dbp (NM_001289983) Rat Tagged ORF Clone

Product data:

Product Type: Expression Plasmids
Product Name: Dbp (NM_001289983) Rat Tagged ORF Clone
Tag: Myc-DDK
Symbol: Dbp
Vector: pCMV6-Entry (PS100001)
E. coli Selection: Kanamycin (25 ug/mL)
Cell Selection: Neomycin
ORF Nucleotide Sequence: >RR215986 representing NM_001289983
Red=Cloning site Blue=ORF Green=Tags(s)

TTTTGTAATACGACTCACTATAGGGCGGCCGGAATTCGTCGACTGGATCCGGTACCGAGGAGATCTGCC
GCC**GCGATCGCC**

ATGGCGCGGCTCTGAGCGACAGGACCCCGGGCCCTGCTGCTGGGTGGCCCGGCTGGGGCCCCCTG
GCGGGGAGCGCTGCTTGGGCTGAGGAGCCTTCTGCAGGAAACAGCAAGCCAAAGAACCGCCAGCTG
CTTGACCTTAGGGACACACCCAGTCTGTGGACCCAGACACCGTGGAGGTGCTAATGACCTTTGAACCT
GATCCGGCTGATCTTGCCCTGTCAAGCATTCCAGGCCATGAGACTTTTGACCCTCGGAGGACCGCTTCT
CAGAGGAGGAATTGAAGCCTCAGCCAATCATGAAGAAGGCAAGGAAAGTCCAGGTGCCCGAGGAACAGAA
GGATGAGAAGTACTGGAGCCGGAGGTACAAGAACAATGAAGCAGCCAAGAGGTGAGAGACGCAAGAAGA
CTCAAGGAGAACCAGATATCTGTGCGGGCAGCCTTCTGGAGAAGGAAAACGCCCTATTGCGGCAGGAGG
TGGTGGCTGTGCGGCAGGAGCTGTCCACTACCGTGTGTCTTACGCTACCAGGCCAACACGGGAC
ACTG

ACGCGTACGCGGCCGCTCGAGCAGAACTCATCTCAGAAGAGGATCTGGCAGCAAATGATATCTGGATT
ACAAGGATGACGACGATAAGGTTTAA

Protein Sequence: >RR215986 representing NM_001289983
Red=Cloning site Green=Tags(s)

MARPLSDRTPGPLLLGGPAGAPPGGALLGLRSLQGNPKPEASCLTSRDTPSPVDPDTVEVLMTFEP
DPADLALSSIPGHETFDPRRHRFSEEELKPQPIMKKARKVQVPEEQKDEKYWSRRYKNNEAKRSRDARR
LKENQISVRAAFLEKENALLRQEVVAVRQELSHYRAVLSRYQAQHGTL

TRTRPLEQKLISEEDLAANDILDYKDDDDKV

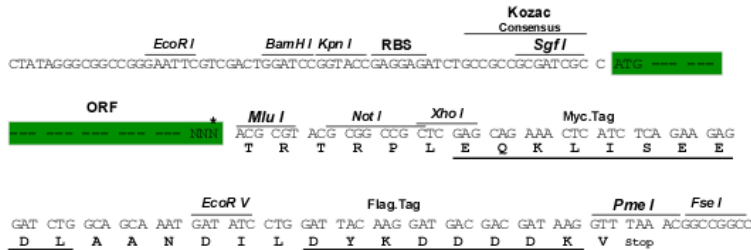
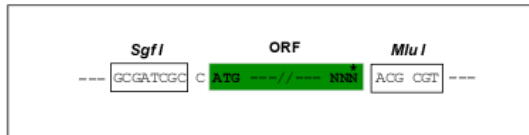
Restriction Sites: Sgfl-MluI



[View online »](#)

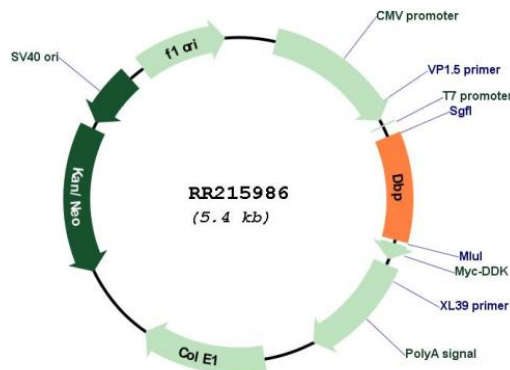
Cloning Scheme:

Cloning sites used for ORF Shutting:



* The last codon before the Stop codon of the ORF

Plasmid Map:



ACCN: NM_001289983

ORF Size: 564 bp

OTI Disclaimer: The molecular sequence of this clone aligns with the gene accession number as a point of reference only. However, individual transcript sequences of the same gene can differ through naturally occurring variations (e.g. polymorphisms), each with its own valid existence. This clone is substantially in agreement with the reference, but a complete review of all prevailing variants is recommended prior to use. [More info](#)

OTI Annotation: This clone was engineered to express the complete ORF with an expression tag. Expression varies depending on the nature of the gene.

Components:	The ORF clone is ion-exchange column purified and shipped in a 2D barcoded Matrix tube containing 10ug of transfection-ready, dried plasmid DNA (reconstitute with 100 ul of water).
Reconstitution Method:	<ol style="list-style-type: none">1. Centrifuge at 5,000xg for 5min.2. Carefully open the tube and add 100ul of sterile water to dissolve the DNA.3. Close the tube and incubate for 10 minutes at room temperature.4. Briefly vortex the tube and then do a quick spin (less than 5000xg) to concentrate the liquid at the bottom.5. Store the suspended plasmid at -20°C. The DNA is stable for at least one year from date of shipping when stored at -20°C.
RefSeq:	<u>NM_001289983.1, NP_001276912.1</u>
RefSeq Size:	1249 bp
RefSeq ORF:	567 bp
Locus ID:	24309
Cytogenetics:	1q22
MW:	21 kDa
Gene Summary:	The protein encoded by this gene is a member of the Par bZIP transcription factor family and binds to specific sequences in the promoters of several genes, such as albumin, Cyp2a4, and Cyp2a5. The encoded protein can bind DNA as a homo- or heterodimer and is involved in the regulation of some circadian rhythm genes. Three transcript variants encoding different isoforms have been found for this gene. [provided by RefSeq, Feb 2014]