

Product datasheet for **RR215970**

Igf2 (NM_001190162) Rat Tagged ORF Clone

Product data:

Product Type: Expression Plasmids
Product Name: Igf2 (NM_001190162) Rat Tagged ORF Clone
Tag: Myc-DDK
Symbol: Igf2
Synonyms: IGFII; RNIGF2
Vector: pCMV6-Entry (PS100001)
E. coli Selection: Kanamycin (25 ug/mL)
Cell Selection: Neomycin
ORF Nucleotide Sequence: >RR215970 representing NM_001190162
Red=Cloning site Blue=ORF Green=Tags(s)

TTTTGTAATACGACTCACTATAGGGCGCCGGAATTCGTCGACTGGATCCGGTACCGAGGAGATCTGCC
GCC**GCGATCGCC**

ATGGGGATCCCAGTGGGAAGTCGATGTTGGTGCTTCTCATCTCTTTGGCCTTCGCCTTGCTGCATCG
CTGCTTACCGCCCAGCGAGACTCTGTGCGGAGGGGAGCTTGTTGACACGCTTCAGTTTGTCTGTTCCGA
CCGCGGCTTCTACTTCAGCAGGCCCTCAAGCCGTGCCAACCGTCGCAGCCGTGGCATCGTGAAGAGTGC
TGCTTCCGCAGCTGCGACTTGGCCCTCCTGGAGACATACTGTGCCACCCCGCCAAGTCCGAGAGGGACG
TGCTACCTCTCAGGCCGTACTCCGGACGACTTCCCCAGATACCCCGTGGGCAAGTTCTTCAAATTCGA
CACCTGGAGACAGTCCGCGGGACGCTGCGCAGAGGCCTGCCTGCCCTCCTGCGTGCCCGCGGGGTGCG
ATGCTTGCCAAAGAGCTCGAAGCGTTCAGAGAGGCCAAGCGCCACCGTCCCCTGATCGTGTACCACCCA
AAGACCCCGCCACGGGGAGCCTCTTCGGAGATGTCCAGCAACCATCAG

ACGCGTACGCGGGCGCTCGAGCAGAACTCATCTCAGAAGAGGATCTGGCAGCAAATGATATCCTGGATT
ACAAGGATGACGACGATAAGGTTTAA

Protein Sequence: >RR215970 representing NM_001190162
Red=Cloning site Green=Tags(s)

MGIPVKGSMVLVLLISLAFALCCIAAYRPSETLCGGELVDTLQFVCSDRGFYFSRPSSRANRRSRGIVEEC
CFRSCDLALLETYCATPAKSERDVSTSQAVLPDDFPRYPVGGKFFKFDTWQTSAGRLRRGLPALLRARRGR
MLAKELEAFREAKRHRPLIVLPPKDPAHGGASSEMSNHQ

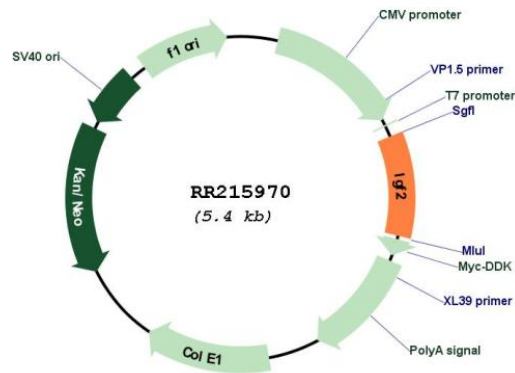
TRTRPLEQKLISEEDLAANDILDYKDDDDKV

Restriction Sites: SgfI-MluI



[View online »](#)

Cloning Scheme:

Plasmid Map:


ACCN: NM_001190162

ORF Size: 540 bp

OTI Disclaimer: The molecular sequence of this clone aligns with the gene accession number as a point of reference only. However, individual transcript sequences of the same gene can differ through naturally occurring variations (e.g. polymorphisms), each with its own valid existence. This clone is substantially in agreement with the reference, but a complete review of all prevailing variants is recommended prior to use. [More info](#)

OTI Annotation: This clone was engineered to express the complete ORF with an expression tag. Expression varies depending on the nature of the gene.

Components:	The ORF clone is ion-exchange column purified and shipped in a 2D barcoded Matrix tube containing 10ug of transfection-ready, dried plasmid DNA (reconstitute with 100 ul of water).
Reconstitution Method:	<ol style="list-style-type: none">1. Centrifuge at 5,000xg for 5min.2. Carefully open the tube and add 100ul of sterile water to dissolve the DNA.3. Close the tube and incubate for 10 minutes at room temperature.4. Briefly vortex the tube and then do a quick spin (less than 5000xg) to concentrate the liquid at the bottom.5. Store the suspended plasmid at -20°C. The DNA is stable for at least one year from date of shipping when stored at -20°C.
RefSeq:	<u>NM_001190162.1</u> , <u>NP_001177091.1</u>
RefSeq Size:	3519 bp
RefSeq ORF:	543 bp
Locus ID:	24483
UniProt ID:	<u>P01346</u>
Cytogenetics:	1q41
MW:	20.1 kDa
Gene Summary:	a mitogenic growth factor; may have a role in fetal development [RGD, Feb 2006]