

Product datasheet for **RR215886**

Zswim7 (NM_001163492) Rat Tagged ORF Clone

Product data:

Product Type: Expression Plasmids
Product Name: Zswim7 (NM_001163492) Rat Tagged ORF Clone
Tag: Myc-DDK
Symbol: Zswim7
Synonyms: RGD1310324
Vector: pCMV6-Entry (PS100001)
E. coli Selection: Kanamycin (25 ug/mL)
Cell Selection: Neomycin
ORF Nucleotide Sequence: >RR215886 representing NM_001163492
Red=Cloning site Blue=ORF Green=Tags(s)

TTTTGTAATACGACTCACTATAGGGCGGCCGGAATTCGTCGACTGGATCCGGTACCGAGGAGATCTGCC
GCC**CGGATCGCC**

**ATGGCGGTACGCTCCCGGAGGTCGTGGAGGAGCTCTGAGCGAGATAGCCGCCGCTGTGCGGGACAGCG
CGAGAATCCCGACGAGCTTCTTTATCGCTGAAGTTTGTGTTGGGTCATCAGCCATCCAAGCCTTGA
CCTAGTTGATCGAGAGTCAGTCACTTTAATCTCATCACCCAGCGGGAGGCGTGTACCAGGTGCTAGGG
AGTTCTGGCACAACGTACACGTGTCTGGCTTCTGCCACTACTGCTCGTCCCAGCATTCTCCTTCTCAG
TGTTAAGGAAGAGTGACAGCCTGCTGTGAAGCATCTTCTGGCAATTTATCTTAGTCAGTCTGAGGAA
CTGCCAGCAGCTCAGTGTGTCTGACAAGCAACTGACAGACCTGTTATTGATGGAGAGGACACAAGAAGCA**

**ACGCGTACGCGGCCGCTCGAGCAGAACTCATCTCAGAAGAGGATCTGGCAGCAAATGATATCCTGGATT
ACAAGGATGACGACGATAAGGTTTAA**

Protein Sequence: >RR215886 representing NM_001163492
Red=Cloning site Green=Tags(s)
MAVTLPEVVEELLSEIAAAVRDSARIPDELLL~~SLK~~FVFGSSAIQALDLVDRESVTLISSPSGRRVYQVLG
SSGTTYTCLASCHYCSPAFSFSVLRKSDSLCKHLLAIYLSQLLRNCQQLSVSDKQLTDL~~LL~~MERTQEA

TRTRPLEQKLISEEDLAANDILDYKDDDDKV

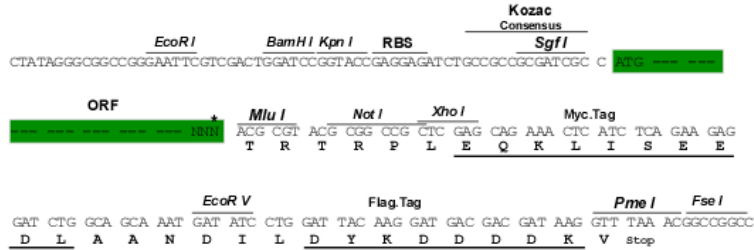
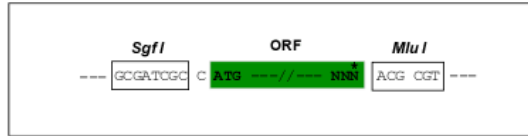
Restriction Sites: Sgfl-MluI



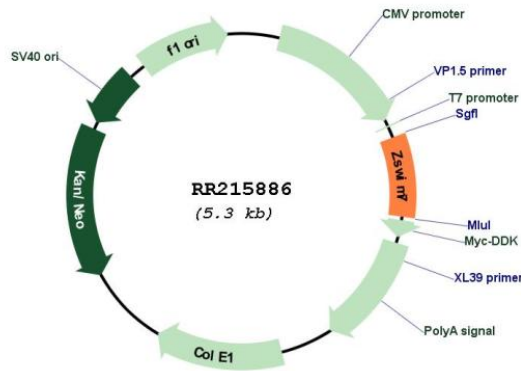
[View online »](#)

Cloning Scheme:

Cloning sites used for ORF Shuttling:



* The last codon before the Stop codon of the ORF

Plasmid Map:

ACCN:

NM_001163492

ORF Size:

420 bp

OTI Disclaimer:

The molecular sequence of this clone aligns with the gene accession number as a point of reference only. However, individual transcript sequences of the same gene can differ through naturally occurring variations (e.g. polymorphisms), each with its own valid existence. This clone is substantially in agreement with the reference, but a complete review of all prevailing variants is recommended prior to use. [More info](#)

OTI Annotation:	This clone was engineered to express the complete ORF with an expression tag. Expression varies depending on the nature of the gene.
Components:	The ORF clone is ion-exchange column purified and shipped in a 2D barcoded Matrix tube containing 10ug of transfection-ready, dried plasmid DNA (reconstitute with 100 ul of water).
Reconstitution Method:	<ol style="list-style-type: none">1. Centrifuge at 5,000xg for 5min.2. Carefully open the tube and add 100ul of sterile water to dissolve the DNA.3. Close the tube and incubate for 10 minutes at room temperature.4. Briefly vortex the tube and then do a quick spin (less than 5000xg) to concentrate the liquid at the bottom.5. Store the suspended plasmid at -20°C. The DNA is stable for at least one year from date of shipping when stored at -20°C.
RefSeq:	<u>NM_001163492.1</u> , <u>NP_001156964.1</u>
RefSeq Size:	718 bp
RefSeq ORF:	423 bp
Locus ID:	287388
Cytogenetics:	10q23
MW:	15.4 kDa