

Product datasheet for **RR215677**

Nod2 (NM_001106172) Rat Tagged ORF Clone

Product data:

Product Type:	Expression Plasmids
Product Name:	Nod2 (NM_001106172) Rat Tagged ORF Clone
Tag:	Myc-DDK
Symbol:	Nod2
Synonyms:	Card15
Mammalian Cell Selection:	Neomycin
Vector:	pCMV6-Entry (PS100001)
E. coli Selection:	Kanamycin (25 ug/mL)



[View online »](#)

ORF Nucleotide Sequence:

>RR215677 representing NM_001106172
 Red=Cloning site Blue=ORF Green=Tags(s)

TTTTGTAATACGACTCACTATAGGGCGGCCGGGAATTCGTCGACTGGATCCGGTACCGAGGAGATCTGCC
 GCC**CGGATCGCC**

ATGTGCTCACAGGAAGACTTCCAGGCCAGAGGAGCCAGCTGGTGGCACTGTTGGTCTCAGGGTCCCTGG
 AGGGCTTTGAGAGCATCTTAGACTGGCTGCTGTCTTGGATGTGCTCTCCAGGGAGGACTATGAGGGCCT
 CAGCCTCCCTGGGCAACCTCTCTCCATTCTGCCAGGCGTCTGCTGGACACAGTCTGCAACAAGGTGTT
 TGGGGCTGTCAGAAGCTCTTGAAGCTGTGAGGAGGCCAGGCCAACAGTACACCTTTGAACTGCAAG
 GGTGCTGGGACGTTCACTCCCTCATCCCAGAGACCTGCAGAGTACCCGGCCAGCAATTGTACGGAG
 GCTCTGCAGCCATGTAGAAGCCATATTGGAGCTGGCAAGGGATGAGGGGTTTCTGAGCCAGTACGAATGT
 GAGGAGATCAGGTTGCCAATCTTACATCATCCCAGAGGGCAAGAAGACTGCTTGATCTCGCCGAGTGA
 AGGCAATGGACTGGCCGCTTCTTCTACAGCACGTGAGGAAATACCAGCCTCACTGTCTCTGCCTTA
 CGAGGCTGCTGAGTGTGAGAAGTCACTGCTAAGCTGAGGACCATGGTGTGAGCTCAGTCTCGCTTCTCT
 AGTACTTACGATGGGTCGGAGAATCTTTGCCTGGAGGATATCTACACGGAGAACACCTTAGAGCTGCGGA
 CAGAGGTGGGCACAGCGGGGCCTTGCAGAAGAGCCCTGCCACCTGGGCTGGAGGAACCTTTGGAAC
 CCACGGCCACCTGAACAAAGACGCCGACACTATACTGGTGGTGGGCGAAGCGGGCAGCGCAAGAGCACC
 CTTCTGCAACGTTTGACTTGTGTGGGCATCAGGGCAGAACTCCGAGAGTTCTCTTCAATTTCCCAT
 TCAGCTGCCGGCAGCTGCAATGCATGACCAAACCTCTGTCCCTGAGGACACTGCTCTTGTAGCATTGCTG
 TTGGCCTGATGTCGGTCAGGATGACGCTTCCAGTTCTCCTTGACCATCCTGACCGTGTCTGTAAACC
 TTTGATGGCTGGATGAGTTCAAGTCCGGTTCACAGACCGGGAGCGCCACTGCTCTCCGCTCGACCCCA
 CGTCACTCCAGACTCTGCTTTTCAACCTTCTTTCAGGGAACTGCTGAAGAATGCCTGCAAGGTGAC
 CAGCCGTCAGACGCCGTGTCAGCGCTCCTCAGAAAGTTCGTCCGGACAGAGTGCCACCTTAAGGGCTTC
 TCCGAAGAGGGCATCAAACCTGTACCTGAGAAAGCACCACCGGAACCCGGGGTGGCAGACCGCCTATCC
 ACCTGATCCAAGCTACCTCAGCCCTGCACGGTTTGTGCCACCTCCCTGTCTTCTCATGGATGGTGTCCAG
 ATGTCACCGAGAGCTGTTGCTACAGAACAGGGGCTTCCCAACAACCAGCACGGACATGTACCTCTTGATC
 CTACAGCATTCTGCTGCACGCTCCCTCCGGACTCCTTCCCCTTGGTCTGGGACCTGGACTCCTCC
 AAAGCCGGCTCTCACCCCTCTGCACCTTGCCACCTGGCTCTCCAGGGCCTGGCCATGAGCTGCTATGT
 GTTCTCAGCCCAGCAGCTGCAGGCACACAGGTGGACTCTGAGGATATTTCTTGGTTTCTGGTACGC
 GCCCAAAGTGTGGTGCCCGGAGCAAGGCACCCCTGGAATTCTTGACATTACCTCCAGTGTCTTTTTTG
 CCGCGTTCTACTTGGCTGTGAGTGTGACACATCGGCGGCTCTCTCAAGCACCTTTCAGCTGCGGCCG
 GCCGGCAACTCACTGCTGCTAAGGCTGCTGCCAACCTGTGTATCCAGGGCTCCAGAGTCAAGGGCGGC
 CAAGCAGCTCTGCTGAGAAGGCTGAGCCGCACAACCTGCAGATCACAGCAGCCTTCTAGCGGGTCTGT
 TGTCCCAGCAGCATCGGGACCTGTTGGCTGCATGCCAGGTCCTGAGAGGGTGTGCTCCAGCGTCAGGC
 CCGTGCCCGCTCTGCCTGGCACACAGCCTCCGGGAGCACTTCCATTCCATCCCGCCGGCCGTGCCCGT
 GAGACCAAGAGCATGCATGCTATGCCCGGCTTCAATTTGGTCAATCCGGAGCCTGTACGAGATGCAGGAG
 TGCAGTTGGCCCGGAGGCTGTCCGTGCTTGGACATTGGCACCTGAAGTTGACGTTTTGCAGGGTGG
 CCCTGCAGAGTGGCTGCCCTGGCTTTGTGCTGCAGCATCTGCAGCGCCTGTGGCCCTGCAGTTGGAC
 CACAACCTCCGTTGGCGATGTCGGAGTGAACAGCTGCTGCCATGCCTCGGCGTCTGCACAGCTCTGACT
 TGCAGATAAACAACATCTCCGATCGAGGTGCCCGCACGCTGGTTGAGTGTGCTCTTCGCTGTGAACAGT
 GCAGAAGCTAGCTCTCTTCAACAACAACCTCACTGATGGCTGTGCCTCCTCCGTGGCCAAGCTCCTTGCA
 CACAAGCAGAACTTCTATCTCTGAGGGTGGGGAACAATCACATCACTGCTGCTGGGGCTGAGGTGCTGG
 CCCAGGGACTCAAGAGCAACACCTCCCTGCAGTTCCTGGGTTCTGGGGCAACAGTGTAGGTGATAAGGG
 CTCCCAAGCCCTGGTGAAGTTGTGGCTGATCACCAGAGGCTAAAGTGGCTCAGCCTGGTAGGAAACAAC
 ATTGGCAGCGTGGGTGCCACGCCCTAGCCCTGATGCTGGAGAAGAACAAGTCACTAGAGGAGCTC

ACGCGTACGCGGCCGCTCGAGCAGAACTCATCTCAGAAGAGGATCTGGCAGCAAATGATATCCTGGATT
 ACAAGGATGACGACGATAAGGTTTAA

Protein Sequence: >RR215677 representing NM_001106172
 Red=Cloning site Green=Tags(s)

MCSQEDFQAQRSQLVALLVSGSLEGFESILDWLLSWDVL SREDYEGLSLPGQPLSHSARRLLD TVCNKGV
 WGCQKLFEAVQEAQANSHTFELQGCWDVHSLHPTRDLQSHRPAIVRRLCSHVEAILELARDEGFLSQYEC
 EEIRLPIFTSSQRARRLLDLAAVKANGLAAFLLQHVRLPASLSLPYEAACQKF TAKLRMVAQSRLF
 STYDGSENLCLEDIYENTLELRTEVGTAGALQKSPATLGLEELFGTHGHLNKDADTILV VGEAGSGKST
 LLQRLHLLWASGQNFREFLFIFPFSCRQLQCMTKPLSLRTLLEFHCCWPDVGVQDDVFQFLLDHPDRVLLT
 FDGLDEFKFRFTDRERHCSPLDPTSVQTLLENLLQGNLLKNACKVLT SRPDAVSALLRK FVRTECHLKGF
 SEEGIKLYLRKHHREPGVADRLIHLIQATSALHGLCHLPVFSWVMSRCHRELLLQNRGFPTTSTDMYLLI
 LQHFLHASPDPFPLGLGPGLLQSRLSTLLHLGHLALQGLAMSCYVFAQQLQAAQV DSEDISLGFVLR
 AQSVPVPGSKAPLEFLHITFCFFAAFYLAVSADTSAASLKHLFSCGRPGNSLLRLLPNL CIQGSRVKGG
 QAALLQKAEPHNLQITAAFLAGLLSQQHRDLLAACQVPERVLLQRQARARSCLAHSLREHFHSIPPAVPG
 ETKSMHAMPGF IWLIRSLYEMQEVQLAREAVRRLDIGHLKLTFCRVGPAECAALAFVLQHLQRPVALQLD
 HNSVGDVGVEQLLPCLGVCTALYLRDNNISDRGARTLVECALRCEQLQKLALFNNKLT DGCASSVAKLLA
 HKQNFLSLRVGNNHITAAGAEVLAQGLKSNTSLQFLGFWGNVSGDKGSQALAEV VADHQRLKWL SLVGN
 IGSVGAHALALMLEKNKSLEEL

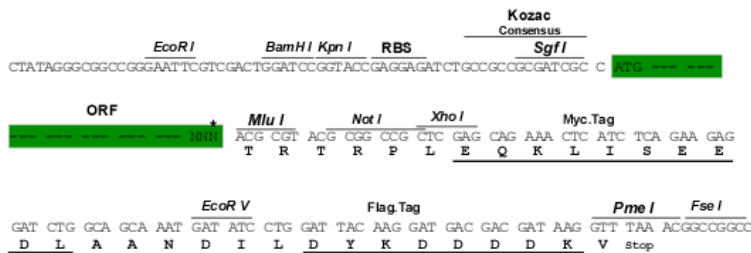
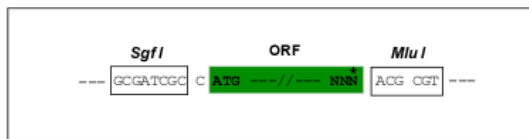
TRTRPLEQKLISEEDLAANDILDYKDDDDKV

Chromatograms: https://cdn.origene.com/chromatograms/ja3398_e07.zip

Restriction Sites: SgfI-MluI

Cloning Scheme:

Cloning sites used for ORF Shuttling:



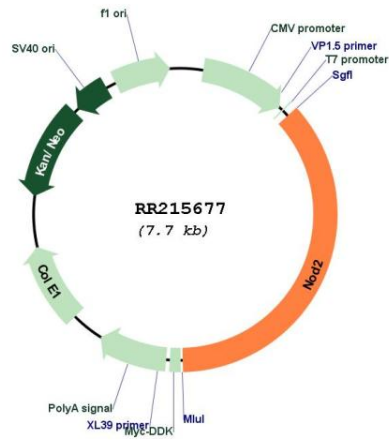
* The last codon before the Stop codon of the ORF

ACCN: NM_001106172

ORF Size: 2796 bp

OTI Disclaimer:	<p>Due to the inherent nature of this plasmid, standard methods to replicate additional amounts of DNA in E. coli are highly likely to result in mutations and/or rearrangements. Therefore, OriGene does not guarantee the capability to replicate this plasmid DNA. Additional amounts of DNA can be purchased from OriGene with batch-specific, full-sequence verification at a reduced cost. Please contact our customer care team at custsupport@origene.com or by calling 301.340.3188 option 3 for pricing and delivery.</p> <p>The molecular sequence of this clone aligns with the gene accession number as a point of reference only. However, individual transcript sequences of the same gene can differ through naturally occurring variations (e.g. polymorphisms), each with its own valid existence. This clone is substantially in agreement with the reference, but a complete review of all prevailing variants is recommended prior to use. More info</p>
OTI Annotation:	This clone was engineered to express the complete ORF with an expression tag. Expression varies depending on the nature of the gene.
Components:	The ORF clone is ion-exchange column purified and shipped in a 2D barcoded Matrix tube containing 10ug of transfection-ready, dried plasmid DNA (reconstitute with 100 ul of water).
Reconstitution Method:	<ol style="list-style-type: none"> 1. Centrifuge at 5,000xg for 5min. 2. Carefully open the tube and add 100ul of sterile water to dissolve the DNA. 3. Close the tube and incubate for 10 minutes at room temperature. 4. Briefly vortex the tube and then do a quick spin (less than 5000xg) to concentrate the liquid at the bottom. 5. Store the suspended plasmid at -20°C. The DNA is stable for at least one year from date of shipping when stored at -20°C.
RefSeq:	<u>NM_001106172.1, NP_001099642.1</u>
RefSeq Size:	3625 bp
RefSeq ORF:	2799 bp
Locus ID:	291912
Cytogenetics:	19p11
MW:	103.4 kDa

Product images:



Circular map for RR215677