

Product datasheet for **RR215675**

Snip1 (NM_001014069) Rat Tagged ORF Clone

Product data:

Product Type: Expression Plasmids
Product Name: Snip1 (NM_001014069) Rat Tagged ORF Clone
Tag: Myc-DDK
Symbol: Snip1
Mammalian Cell Selection: Neomycin
Vector: pCMV6-Entry (PS100001)
E. coli Selection: Kanamycin (25 ug/mL)
ORF Nucleotide Sequence: >RR215675 representing NM_001014069
Red=Cloning site Blue=ORF Green=Tags(s)

TTTTGTAATACGACTCACTATAGGGCGGCCGGGAATTCGTCGACTGGATCCGGTACCGAGGAGATCTGCC
GCC**CGATCGCC**

ATGAAAGCGGGGAAGAGCGAGCGGGAGCGAAGCAGCCGGCGGCACACCGGTGAGCGACGCTTTGGCGA
CCGTAGTAGTGAAGCAGGAACGTCTAAGCCCCGAACCCGTCGCACACCGCCGACCTGACGCTCCAGCCGC
TAGCCCCCCCCCGCCCGCGAGTCGGGCTCGGCTGGTCACCGCGGGAGCCGAGCCCGGGGAGCGAGC
CGGTCCCAGCCAAAAAGAAAGCAAGTCTCCGGCAGAAGAAGCAAGTCTCCTCGGACTAAGAGAAGCC
GGAGTCCCCTACTCCACGGTCAAAGTGAAGCAGGAACGGGAGGACCATCCACGGAGAGGACGAGAGGA
TAGGCAGCACCGGAGTTATCAGAACAGGAGCACAGGAGAGCACGGAACAGCGAGCGAGATCGGCACCGG
GGCCATGCCCGCCAAAGGAGGAGCTCTGATGAGAGGCCTGTGAGTGGGCAGGGTCCGGATAGAGACAGCC
AGATCCTGCAGGCCAGGAAGAAGAGAGGGACTTTAATAATGCCAGGCGCCGGGAGCACC GCCAGCAGAA
TGAGAGTGCTGGCGCTGAGGCTCAGGAGGTGATCCCTCGCCCTGCTGGTAACAAGAAACAAAGAGGTGCCT
GTTAAAGAAAACCAAGCTTTGAACTTTCTGGGCACTTCTTGAGGACACTAATACCTTCCGGGGTGTGG
TCATTAATAACAGTGAGCCCCAGAACCCGCATCCCCAAAAACGGTGGCGTCTCTACCCCTTTAAAAA
TGATGAGGTGCTCCAGTCATGTACATCCATCGGCAGAGTGCGTACCTGCTGGGAGACATCGCCGCATC
GCGGACATTCCTATCGACCATCCCTCTTGCTCAAAGCAACATGCAGTCTTCCAGTACCGGCTTGTGGAGT
ACACCCGTGCTGATGGGACGGTTGGTCGGAGGGTGAAGCCCTACATCATTGACCTTGGCTCAGGCAACGG
AACATTCTTGAACAACAAGCGTATTGAGCCACAGAGATACTATGAACTGAAAGAAAAAGATGTACTTAAA
TTTGGGTTCAGCAGCAGAGAATATGTCTTGCTTCATGAGTCTTCAGACACCTCTGAACTTGACAGGAAGG
AAGATGAAGATGAGGAGGAGGAGGAGGAAATGGTGTCTGACAGCAGC

ACGCGTACGCGGCCGCTCGAGCAGAACTCATCTCAGAAGAGGATCTGGCAGCAAATGATATCCTGGATT
ACAAGGATGACGACGATAAGGTTTAA



[View online »](#)

Protein Sequence: >RR215675 representing NM_001014069
 Red=Cloning site Green=Tags(s)

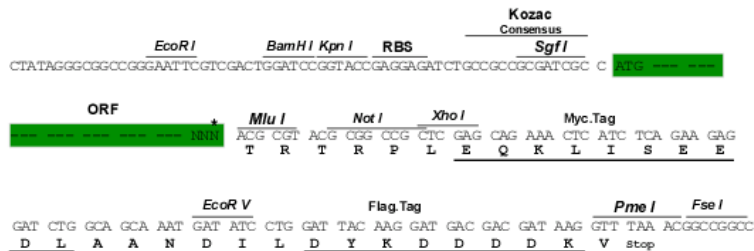
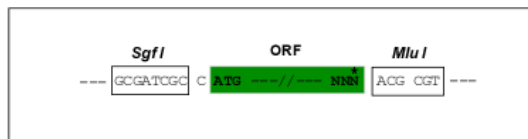
MKAGKSERERSSRRRHRSGDALATVVVKQERLSPEPVAHRRPDAPAAAPPPAAESGSAGHRGSRARGAS
 RSPAKKSKSSGRRSKSPRTKRSRSPHYSTVKVKQEREDHPRRGREDRQHRELSEQEHRARNSEDRHR
 GHARQRSSDERPVSGQGRDRDSQILQAQEEERDFNNARRREHRQNESAGAEAEQEVIPRAGNKNKEVP
 VKEKPSFELSGALLEDNTFRGVVVIKYSEPPEARIPKKRWRLYPFKNDEVLVPMYIHRQSAAYLLGRHRI
 ADIPIDHPSCSKQHAFVQYRLVEYTRADGTVGRRVKPYIIDLGSNGTFLNNKRIEQRYVELKEKDVLK
 FGFSSREYVLLHESSDTSELDRKEDEEEEEEMVSDSS

TRTRPLEQKLISEEDLAANDILDYKDDDDKV

Restriction Sites: SgfI-MluI

Cloning Scheme:

Cloning sites used for ORF Shuttling:



* The last codon before the Stop codon of the ORF

ACCN: NM_001014069

ORF Size: 1167 bp

OTI Disclaimer: The molecular sequence of this clone aligns with the gene accession number as a point of reference only. However, individual transcript sequences of the same gene can differ through naturally occurring variations (e.g. polymorphisms), each with its own valid existence. This clone is substantially in agreement with the reference, but a complete review of all prevailing variants is recommended prior to use. [More info](#)

OTI Annotation: This clone was engineered to express the complete ORF with an expression tag. Expression varies depending on the nature of the gene.

Components: The ORF clone is ion-exchange column purified and shipped in a 2D barcoded Matrix tube containing 10ug of transfection-ready, dried plasmid DNA (reconstitute with 100 ul of water).

Reconstitution Method:

1. Centrifuge at 5,000xg for 5min.
2. Carefully open the tube and add 100ul of sterile water to dissolve the DNA.
3. Close the tube and incubate for 10 minutes at room temperature.
4. Briefly vortex the tube and then do a quick spin (less than 5000xg) to concentrate the liquid at the bottom.
5. Store the suspended plasmid at -20°C. The DNA is stable for at least one year from date of shipping when stored at -20°C.

RefSeq: [NM_001014069.1](#), [NP_001014091.1](#)

RefSeq Size: 2338 bp

RefSeq ORF: 1170 bp

Locus ID: 313588

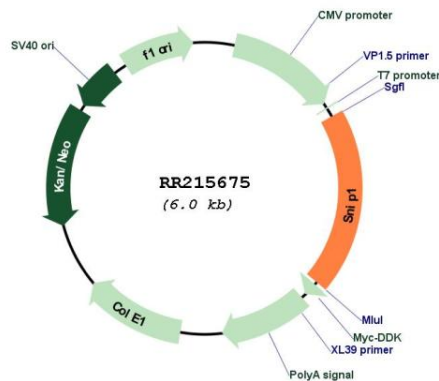
UniProt ID: [Q5M9G6](#)

Cytogenetics: 15p14

MW: 44.9 kDa

Gene Summary: Required for pre-mRNA splicing as component of the spliceosome. Down-regulates NF-kappa-B signaling by competing with RELA for CREBBP/EP300 binding. Involved in the microRNA (miRNA) biogenesis. May be involved in cyclin-D1/CCND1 mRNA stability through the SNARP complex which associates with both the 3'end of the CCND1 gene and its mRNA. [UniProtKB/Swiss-Prot Function]

Product images:



Circular map for RR215675