

Product datasheet for **RR215659**

H6pd (NM_001106698) Rat Tagged ORF Clone

Product data:

Product Type:	Expression Plasmids
Product Name:	H6pd (NM_001106698) Rat Tagged ORF Clone
Tag:	Myc-DDK
Symbol:	H6pd
Synonyms:	H6pdh
Mammalian Cell Selection:	Neomycin
Vector:	pCMV6-Entry (PS100001)
E. coli Selection:	Kanamycin (25 ug/mL)



[View online »](#)

ORF Nucleotide Sequence:

>RR215659 representing NM_001106698
 Red=Cloning site Blue=ORF Green=Tags(s)

TTTTGTAATACGACTCACTATAGGGCGGCCGGAATTCGTCGACTGGATCCGGTACCGAGGAGATCTGCC
 GCC**CGATCGCC**

ATGAAGTGCACAGGCATTTGGAAGATGCTCGTGGCAGCCGTGTGCTTGGCCCTTCTGGGCTGCCTGCAGG
 CACAGGAATTCAGGGGACATGTTTCCATAATCCTACTAGGAGCAACCGGGACCTAGCTAAAAAGTACCT
 GTGGCAGGGACTGTTCCAGCTATACCTGGATGAGGCTGGGAAGGGCCACAGTTTCCAGCTTCCACGGGGCC
 GCCCTGACAGCCCCCAGCAAGGCCAGAAGCTCATGGATAAGGCTTTGGAATCCCTCTCCTGCCCAAGG
 ACCTGGTACCCAGTGCCTGCGATGAACTCAAGGCTCAGTTTCTGCAGCTGAGCCAGTACCGCAACTGAA
 GACAGTGGAGGACTATCAGACTCTCAACAAGGACATCGAGACCCAGGTCCAGCAGGATGGGCTCTGGGAG
 GCCGGCAGGGTCTTCTACTTCTCCGTGCCGCCGTTCCGCTACGCCGACATTGCCCGTAACATCAACAGCA
 GCTGCCGACCACCCAGGCGCTGGCTACGGGTGTTTTTAAAAACCCTTCGGCCATGACCACCTCTC
 AGCCCAGCAGCTGGCTTCAAGACTTGAAGCTTTTTCCAGGAAGAGGAGATGTACCGTGTAGATCATTAC
 CTGGGCAAGCAGGCGGTGGCTCAGATCTGCCCTTCCGAGATCAGAACCAGCAAGGCTTGGATGGCTCT
 GGAACAGGCACCAGTGGAGCGGGTGAATCATCTTGAAGGAGACCGTGGATGCAGGAGTTCGGGCCAG
 TTTCTACGAGGAGTATGGCGTCATCCGAGACACGCTGCAGAACCACCTGACTGAGATCCTCACGCTGGT
 GCCATGGAAGTGGCCCAAAACATCAGCAGCTCAGCCGCGGTGCTCCAGCACAAGTCCAGGCCTTCCAGG
 CCCTGCGGGGGCTGCAGAAGAGCAACGCCATCCTGGGCCAGTACCAGGCCTATAGTGGGCAGGTGCGCCA
 AGAGCTGCAGAAGCCAGACGGTTTCCAGAGCCTGACGCCAACCTTCGCAGGTGTCCTTGTCCACATCGAC
 AACCTGCGCTGGGAGGGCGTCCCTTTCATCCTGATGTCTGGCAAGGCCTTGGACGAGAGAGTGGGCTATG
 TTCGGATCTTGTTAAGAATCGGGCGTACTGCACCCAGGGCGAGAGACTGGGTCCCGAACGGAGCCG
 GTGCCTGCCACGACAGATTGTCTTCTACATTGGACACGGTGAGCTGGGCCACCCTGCCATCCTGGTCAGC
 AAGAACCTGTTCAGCCCTCTCTACCCGCTCAGAGCTGGAAGGGGGTGCAGGACCAGCCTGGGCTCCACC
 TCTTTGGCCGCCACTGTCCGATTAATGCTATAGGCCGTCGCGGAGCAAGATGCCTACTCCACGCT
 CCTGTCCACATCTTCCACTGCCCAAGGAGTCTTTCATCACCACAGAGAACCTTGGCCCTCTGGGTC
 TTCTGGACCCCGTTGCTGGACAGCCTGTCTTTGAAGTCCACGCTGTACCCAGGAGGCGCGGAGAACG
 ACCATCTGCTAGACTTCGAGTTTAGCGGGGTGAGCTGACCTTCTCCAGCAGCAGCTAGAGGTGCTGAT
 GCCAGAAGTGGGTCAGTGCCAAAGCCAGCGACTTCCAGGTCTTAGGGCCAGTATAGAAAGAGCCCA
 CTGATTACTGCCTGGCCAGAGGAGCTGATCTCCAAGCTGGCCAATGACATCGAAGCCGCCAGTGCAGG
 CGTAAGGCGCTTCGGCAAGTCCACCTGGCACTGTCCAGGGGTTTCGAGCCCATAGCGCTTTCACGCA
 GCTGGCCACGGGGCATTACAGCTTCCCCTGGGCCTACACGCACCTCTGGCTGGTGCATGAGCGTTGTGTC
 CCTCTGTGAGATCCAGACTCCAACCTCCAGGGTCTGCAGGCTCATCTGCTGCAGCACGTCAGGGTGCCT
 ACTACAATATCCACCCATGCCGGTGCACCTGCACCAGCGGCTCTGTGCTGAGGAGGACCAGGGGGCTCA
 GACCTATGCCAGCGAGATCTCAGCCCTGGTGGCCAACAGCAGCTTTGACCTGGTGTGCTAGGCATGGGC
 ACCGATGGGCACACGGCTTCTCTGTTCCACAGTACCCAGGGGGCTGGATGGTGACCAGTTGGTGGTGC
 TCACGGAGAGCCCATTCAGGCCACCAACGCATGAGCCTCAGCCTGCCCTCATCAACCGGGCCAAAGAA
 GGTAGCTGTCTGGTTCATGGGAAGGACAAAACGTGAGATCACCACGCTGGTGAGCCGCGTGGGCCATGAG
 CCAAGAAGTGGCCATCTCGGGTGTGGTGCCTTTCTGGACAGCTGGTTTGGTACATGGACTATGAGG
 CCTTCTGGGA

ACGCGTACGCGGCCGCTCGAGCAGAACTCATCTCAGAAGAGGATCTGGCAGCAATGATATCCTGGATT
 ACAAGGATGACGACGATAAGGTTTAA

Protein Sequence: >RR215659 representing NM_001106698
Red=Cloning site Green=Tags(s)

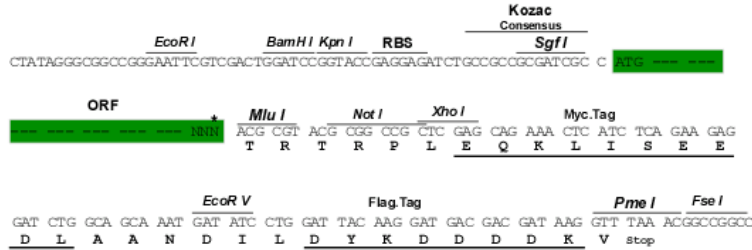
MKCTGIWKMLVAAVCLALLGCLQAQEFRGHVSIILLGATGDLAKKYLWQGLFQLYLDEAGKGHSFSFHGA
ALTAPQQGQKMDKALESLSCKDLVPSRCDELKAQFLQLSQYRQLKTVEDYQTLNKDIETQVQQDGLWE
AGRVFYFSVPPFAYADIARNINSSCRPHPGAWLRVVFKEKPFQHDHLSAQQLASELGSFFQEEEMYRVDHY
LGKQAVAQILPFRDQNRKALDGLWNRHHVERVEIILKETVDAGGRASFYEEYGVIRDTLQNHLEILTIV
AMELPPNISSSAAVLQHKLQAFQALRGLQKSNAILGQYQAYSGQVRQELQKPDGFQSLTPTFAGVLVHID
NLRWEGVPPFILMSGKALDERVGYVRILFKNRAYCTQGERHWVPERSRCLPQQIVFYIGHGELGHPAILVS
KNLKFPSLPAQSWKGVQDQPLHLFGRPLSDYYAYRPVREQDAYSTLLSHIFHCRKESFITNLLASWV
FWTPLDLSLFEVPRLYPGGAENDHLLDFEFSGGQLTFSQQQLEVLMPELGSVPKPSDFQVLRQYRKSP
LITAWPEELISKLANDIEAAAVQAVRRFGKHLALSGGSSPIALFQQLATGHYSFPWAYTHLWLDERCV
PLSDPDSNFQGLQAHLLQHVRVPYNIHPMPVHLHQRCAEEDQGAQTYASEISALVANSSFDLVLLGMG
TDGHTASLFPQSPRGLDGDQLVVLTESPFRPHQRMSLSLPLINRAKKVAVLVMGRTKREITTLVSRVGHE
PKKWPISGVVPLSGQLVWYMDYEAFLG

TRTRPLEQKLISEEDLAANDILDYKDDDDKV

Restriction Sites: Sgfl-MluI

Cloning Scheme:

Cloning sites used for ORF Shuttling:



* The last codon before the Stop codon of the ORF

ACCN: NM_001106698

ORF Size: 2391 bp

OTI Disclaimer: The molecular sequence of this clone aligns with the gene accession number as a point of reference only. However, individual transcript sequences of the same gene can differ through naturally occurring variations (e.g. polymorphisms), each with its own valid existence. This clone is substantially in agreement with the reference, but a complete review of all prevailing variants is recommended prior to use. [More info](#)
OTI Annotation: This clone was engineered to express the complete ORF with an expression tag. Expression varies depending on the nature of the gene.

Components: The ORF clone is ion-exchange column purified and shipped in a 2D barcoded Matrix tube containing 10ug of transfection-ready, dried plasmid DNA (reconstitute with 100 ul of water).

Reconstitution Method:

1. Centrifuge at 5,000xg for 5min.
2. Carefully open the tube and add 100ul of sterile water to dissolve the DNA.
3. Close the tube and incubate for 10 minutes at room temperature.
4. Briefly vortex the tube and then do a quick spin (less than 5000xg) to concentrate the liquid at the bottom.
5. Store the suspended plasmid at -20°C. The DNA is stable for at least one year from date of shipping when stored at -20°C.

RefSeq: [NM_001106698.1](#), [NP_001100168.1](#)

RefSeq Size: 4724 bp

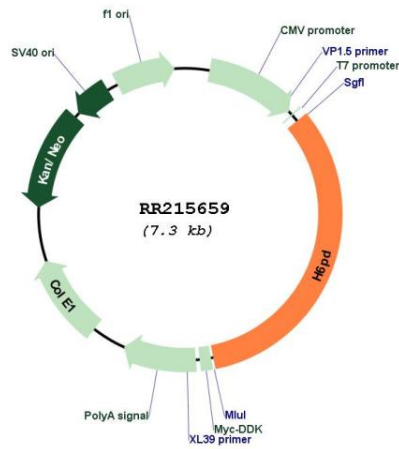
RefSeq ORF: 2394 bp

Locus ID: 298655

Cytogenetics: 5q36

MW: 89.8 kDa

Product images:



Circular map for RR215659