

Product datasheet for **RR215650**

Wdpcp (NM_001127537) Rat Tagged ORF Clone

Product data:

Product Type:	Expression Plasmids
Product Name:	Wdpcp (NM_001127537) Rat Tagged ORF Clone
Tag:	Myc-DDK
Symbol:	Wdpcp
Synonyms:	RGD1309501
Mammalian Cell Selection:	Neomycin
Vector:	pCMV6-Entry (PS100001)
E. coli Selection:	Kanamycin (25 ug/mL)



[View online »](#)

ORF Nucleotide Sequence:

>RR215650 representing NM_001127537
 Red=Cloning site Blue=ORF Green=Tags(s)

TTTTGTAATACGACTCACTATAGGGCGGCCGGGAATTCGTCGACTGGATCCGGTACCGAGGAGATCTGCC
 GCC**CGGATCGCC**

ATGTCCTTCTGCTTGACTGAACTGCACCTGTGGTCTCTGAAAAGCACCTTACACATTGCGGATAGAGACA
 TCGGCGTCTACCAGTACTATGACAAGAAAGATCTACCAGTATCAGCAGCAGAGCATGGTAACTTAGAAGA
 AAAACAAAGGCTGGCAGAATCACGAGATTATCCTTGGACACTCAAAAATAGACGCCCAGAAAACTTCGA
 GATTCAGTCAAAGAGTTGGAGAACTGATGACAACAGTCAGTGTGTGCTGTGCCAATGGAAGAGCAAAC
 ACATCTGTGAGCTCCTCTTTGGTTCAGGTGTGCTGGTGTCCCTAAGCCTTCTGGGCCTCAGCTGGAGAA
 AGTGGTGATTGACAGGAGCCTGGTGGGGAAGCTCATCTCAGACACCATCAGTGTGCTCTCCTTACAGAC
 AGTTTCATCATCTTATCATTCTGGCACAAAACAAATTATGTTTTATTCAATTTGCAAAGAAGATGGATT
 CTCTTGATGTAACAAGAGGTTGGAAAAGCTCTCAGCCTTGATTATAAGATTTCTACCATGACATACC
 TGGCCCAGCCACCAGGACAGTAGATCGTCACTTAGCCATCAACTCAGGATCTAGCTGTTTGTCTGG
 TGGCCTCTGCTCAGCGATGATGCTTGGCCTTGGACTCCGATCGCTTCTGAGAAGGACAGAGCCAATATGC
 TGCTCCTGGGCTTTACTCAAGGAGGATTGGAGGTCCTGAGCTCTGTTTCGACAGAATGGAATCCTCTGGA
 TGTTCACTTTGGCACCAGACAACCTTATCAGGTGTTACAGTGGAGTGTCTCCTCAGTGTAGACCAGGAG
 CCCATGGCTGACAGCTGTATCTACGAGTCTGTCCGGAACAACTCCATTGCGTGTGAGTACTAGAATAC
 CACTAAGTCAAAGGCCATCAGCTGTGTAAGAATTCTACGGAAGACAACTGATTGTGGGCTGTGAAGA
 CTCGTCCGTAATTCTCTATGAAGCTCACCGTGGAGTACTCTCTGGCCCAGGCTGAACTTATGCCTTCA
 TTAATAAGCTGCCACCAAGTGGTGCCATTCTGCTGGTGGCAGCAACCAAGGGGAATTACAAGTTTTTG
 ACATTGCTGTCCCCTATCAACATCCAGCTCTTGGCAGAAGATTGCTTACCAAAGGAGACTCTGCAATT
 CAATAAATTCTTTGATTTTTCCAGCAGTCTTGTTCAATGTCAGTGGATAGCTCCTCCATTGTTTTCCAG
 AAGCCTAAGAGAGGAGAAATCTGTGATCTCCTCTCCTCAGGTTCAACAGAGGACCTTTGGGTGTGCTGT
 TGTTTTAACTTGGTGTCTCAGGCGAGGGCAGCTGGGCCTGGTGGACCTTATCTCCAGTACATTCACTG
 TGATGAGGTGTACGAGGCCGTACGCGTCTGAGCAGCATGAACTGGGACACCCTGGGGCAGCAGTGTCTC
 ATCAGCATGAGCACCATTGTGAACCATCTTCTCAGACAGAGGCTCACTCCGGAGAGGGAAGCACAGCTTG
 AGGCAAGCCTTGGAACCTTCTATGCTCCAGCGAGACCGCTTCTGGATACTCACTGTTCTGGCATAACAGAG
 CCCGTTGGCACGTACGCCAGGAGGCTCTCCACCACTTGCTCAGGTACCAGAGATTTGAAAAGGCCTTT
 CTTCTAGCGGTTGACATTGGAGCTCGTGACCTGTTTATGATATTCATTACCTTGCCTGGATATGGGTG
 AGCTGGCACTGGCTGAAGTGGCAAGAAGAAGGGCAGATGACATTGATGTCGAGTCAAGTGTGCTCTGGAGT
 CGAACTCCTGGGACCCTTGGACAGAAGAGACATGCTGAATGAAGGTTTTGCCGGCTCAGCTTTAACACT
 GAAGGAGGAAACCCATTTCCAGACCTTCTTCTCCAGTGGTTCAACACCAAGCATACTATTCAACAGA
 AAATACCAATGGCCCTTCAAACAGACGGGCAATTGAAAGAAAGAATGAGGTGATGGAGGAGACAGAGGA
 GGAAGAGG
 GGAGAACTGAGGGAAGACCACAGGAGACAGGACTGAAGATGTTGGTCTCTCAGAATGGTTCACCTTTG
 GTTTGGTG

ACGCGTACGCGGCCGCTCGAGCAGAACTCATCTCAGAAGAGGATCTGGCAGCAAATGATATCCTGGATT
 ACAAGGATGACGACGATAAGGTTTAA

Protein Sequence: >RR215650 representing NM_001127537
 Red=Cloning site Green=Tags(s)

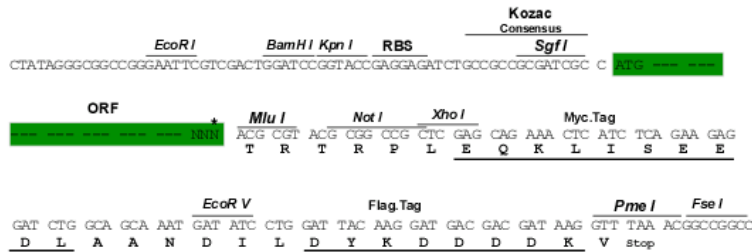
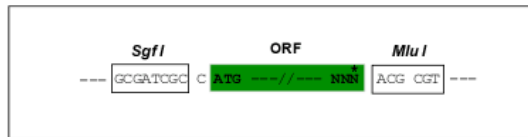
MSFCLTELHLWLSKSTLHIADRIDIGVYQYYDKKDLPVSAAEHGNLEEKQRLAESRDYPWTLKNRRPEKLR
 DSLKELEELMQNSQCVLQWKSKHICQLLFGSGVLVSLSLSGPQLEKVVIDRSLVGKLI SDTISDALLTD
 SFIIISFLAQNKLCFIQFAKKMDSL DVNKRLEKLSALDYKISYHDIPGPATRTVDRHLAINSTQDLAVCW
 WPLLSDDAWPWTPIASEKDRANMLLLGFTQGGLEVLSSVRTEWNPLDVHFGTRQPYQVFTVECSFSVDQE
 PMADSC IYESVRNKLHCVSVTRIPLRSKAISCKNSTEDKLI VGCEDSSVILYE AHRGVTL LAQAELMPS
 LISCHPSGAILLVGSNQGELQVFDIALSPINIQLLAEDCLPKETLQFNKFFDFSSSLVHMQWIAPPIVFQ
 KPKRGEICDLLFLRFNRGPLGVLLFKLGVLRGQLGLVDLIFQYIHCDEVYEAVSVLSSMNWDTLGGQCF
 ISMSTIVNHLLRQRLTPEREAQLEASLGTIFYAPARPLD TTVLAYRDPVGT YARRLFHLLRYRFEKAF
 LLAVDIGARDLFMDIHYLALDMGELALAEVARRRADDIDVESVCSGV ELLGPLDRRMLNEGFAGSALTP
 EGGNPFDLLPSSGSTPKHTIQQKIPNGPSNRRAIERKNEVMEETEEEEEEEEAACTDSSVATTWDAE
 GELREDHRRQDTE DVGSLRMVHFGLV

TRTRPLEQKLI SEEDLAANDILDYKDDDDKV

Restriction Sites: SgfI-MluI

Cloning Scheme:

Cloning sites used for ORF Shuttling:



* The last codon before the Stop codon of the ORF

ACCN: NM_001127537

ORF Size: 2178 bp

OTI Disclaimer: The molecular sequence of this clone aligns with the gene accession number as a point of reference only. However, individual transcript sequences of the same gene can differ through naturally occurring variations (e.g. polymorphisms), each with its own valid existence. This clone is substantially in agreement with the reference, but a complete review of all prevailing variants is recommended prior to use. [More info](#)

OTI Annotation: This clone was engineered to express the complete ORF with an expression tag. Expression varies depending on the nature of the gene.

Components: The ORF clone is ion-exchange column purified and shipped in a 2D barcoded Matrix tube containing 10ug of transfection-ready, dried plasmid DNA (reconstitute with 100 ul of water).

Reconstitution Method:

1. Centrifuge at 5,000xg for 5min.
2. Carefully open the tube and add 100ul of sterile water to dissolve the DNA.
3. Close the tube and incubate for 10 minutes at room temperature.
4. Briefly vortex the tube and then do a quick spin (less than 5000xg) to concentrate the liquid at the bottom.
5. Store the suspended plasmid at -20°C. The DNA is stable for at least one year from date of shipping when stored at -20°C.

RefSeq: [NM_001127537.1](#), [NP_001121009.1](#)

RefSeq Size: 2646 bp

RefSeq ORF: 2181 bp

Locus ID: 305552

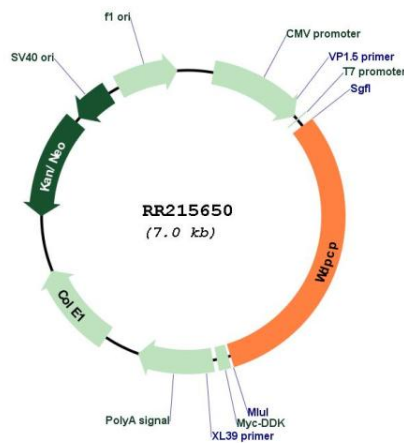
UniProt ID: [B1WC10](#)

Cytogenetics: 14q22

MW: 81.9 kDa

Gene Summary: Probable effector of the planar cell polarity signaling pathway which regulates the septin cytoskeleton in both ciliogenesis and collective cell movements. Together with FUZ and WDPCP proposed to function as core component of the CPLANE (ciliogenesis and planar polarity effectors) complex involved in the recruitment of peripheral IFT-A proteins to basal bodies (By similarity).[UniProtKB/Swiss-Prot Function]

Product images:



Circular map for RR215650