

## Product datasheet for **RR215639**

### **PPP2R3B (NM\_001139492) Rat Tagged ORF Clone**

#### **Product data:**

Product Type:	Expression Plasmids
Product Name:	PPP2R3B (NM_001139492) Rat Tagged ORF Clone
Tag:	Myc-DDK
Symbol:	PPP2R3B
Vector:	pCMV6-Entry (PS100001)
E. coli Selection:	Kanamycin (25 ug/mL)
Cell Selection:	Neomycin



[View online »](#)

**ORF Nucleotide Sequence:**

>RR215639 representing NM\_001139492  
 Red=Cloning site Blue=ORF Green=Tags(s)

TTTTGTAATACGACTCACTATAGGGCGGCCGGGAATTCGTCGACTGGATCCGGTACCGAGGAGATCTGCC  
 GCCCGGATCGCC

ATGGCGCCCCGAAGCCGCCCGCTCGCCGCTCCGGCCTTGCCGTCAGATGAAGTTGACGAGCTCTTCC  
 TGCGCTGGCTCAGCGATCCCGGCACACAACCGCACTGCGAGCAGGACTGCGGCCATCCAAGGACTGC  
 GGTGATCCTCGACCACACAGTGACCCCCAACCCCGCCACGCCCCCTCGATTCCGCCACCAAAGCCATTGCT  
 GCTCCAGCCAAAATTGCTCCGCCGACCCCGCGGTGACCCCCAACCCCGCCGCAATTGCCTCTTCCACCG  
 CCATTACTAAATTTCCGCCCTACGAAAAAGGAACAGGCACAGAGCGGTCCCTCCAGAGGAGAGGAGCC  
 TGGGCCGAAGGCCCACTCCAGGCCGAGGAATCCCGCCTTCTACTCCCGCGCGGGCGCCCGGACAG  
 GGACCCGATGTGGACGACGTAATCGCGGATGTGGAGCGCGCATTGCGCAGGCTGCCGAGCGGGAGGGCGG  
 GGCTGCAGGATATGGCGTTGTTGCCAAGGCCGCTGCTGCCACTCTACTGGAAGGCCCACTGTTCTCT  
 TGCTGCAGGAGGTGGAGCACAGGGCGGCTTTGTGAGCGCACGTGACATCATAGGCCTGTGGAAGCCGATC  
 CTGCTGACCTGCCATGACGAAGCAGCCGCTTCGAACGCTCCTTGGTGGACCAGGGGACGGTGGCTCA  
 GCCCAGAGGACCTTGACCCCTCGTGCAGGATGTTGCGGACTCACATCCTGCGCTGAGCTTCTGCGGGA  
 GGCAGAGCCGCTCCGCCGGGATTATGTCACCACGGTGACACAGCGTGTGTTCTACGCTGTGAACCGGTCT  
 TGGTCTGGCGGATCTCTTGCCAGGAGATTAGACGAAGCTGCTTCTGCGAGGCCGTGCCAGCTGGAGG  
 CGGAACCAACCCCGGCCGTCACACCATCATTCTTCTCTATCCCCACTTTTGCCTATTGTCAGCAA  
 ATTTCAGGCCCTGGATGCTGATGGCGACGGCTGATTGATAGGCACGACCTCCGGCGCATGCGGATGGC  
 GCCATCTCCTTAGGATGATCGACAGGATCTTCTCAGGCGCAGTGACCCGAGCACGGCCATCCCCGAGG  
 GTGGGAAGATGGGGCTCGCGACTTCGTGTGTTCTGCTGTCGGAGGAGGACAAGACCACGCCACCCAG  
 CACTGAGTACTGGTTCGCTGCATGGACCTGGATGGGGACGGCGTCCTTCCGCCCCAGAGCTCAGCTTC  
 TTCTACAGGAACAGGCGCAGAACCTGGCAGCCCGGGGGCGGAGCCTCCGCCCTTCGCTGACCTCACCC  
 GGCAGGCCCTTGACTTGGTGCAGCCACGCTGCCCTGGCCAGATCACGCTGGGCGACCTGAAGCGCTGCGG  
 CCTGGCGGGGAGTTCTTTGATGCCTTTTTCAATGCTGACAAAATCCTGGAGCACGAACGGCGGGAGCCA  
 GCGGGGCTGTGAGGGCCCCGGATGCCGACCCACCCTCTCCGACTGGGATAGGTTGCTGCAGCGGAGT  
 ACGACTTCTGCTTGTGAGGAGGCACAGGATGATGACGCGTGGGAGGAGGGTCTGAGTCCCCGCCAG  
 CTCCCCGATCCCTACGACTTCGAGATGACACCCTAGATCCGCTG

AGCGGACCGACGCGTACGCGCCGCTCGAGCAGAACTCATCTCAGAAGAGGATCTGGCAGCAAATGATATCC  
 TGGATTACAAGGATGACGACGATAAGGTTTAA

**Protein Sequence:**

>RR215639 representing NM\_001139492  
 Red=Cloning site Green=Tags(s)

MAPRPPPSPLRPCLQMKVDELFLRWLSDPGTQRALRAGLRRIQGPAVILDHTVTPNPATALDSATKAI  
 APAKIAPPDPAVTPNPAIASSTAITKFSASRKRNRHRAVPPRGEPEGKAPLPGRGIPAFYFPRGRPGQ  
 GPDVDDVIADVERAFARLPSGRAGLQDMGVVAKACCCPLYWKAPLFLAAGGGAQGGFVSARDIIGLWKPI  
 LLTCHDEAARFERLLGGPGDGLSPEDLAPLVQDVADSHPLSFLREAEPLRRDYVTTVTRVFYAVNRS  
 WSGRISQEIIRSCFLQAVSQLEAEPNPGRATPSFFSYPHFCVIVSKFQALDADGDGLIDRHDLRRHADG  
 AISSRMIDRIFSGAVTRARPSPEGGKMLADFWVFLSEEDKTTPTSTEYWFRCMDLDGDGVLSAPELSF  
 FYEEQAQNLAAARGAEPFADLTRQALDLVQPRCPGQITLGDLCRCGLAGEFFDAFFNADKFLHERREP  
 AGPVRAPDADPTLSDWDRFAAEYDFLLAAEAQDDAWEEGSESPSSPDYDFADDTLDPL

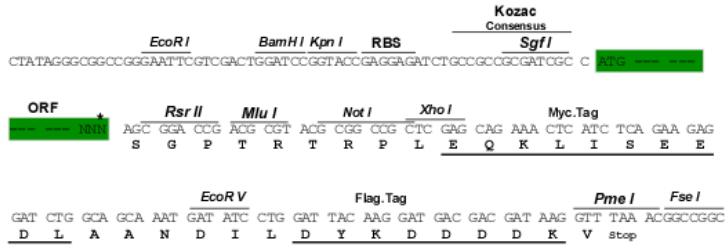
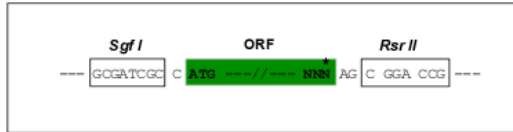
SGPTRTRPLEQKLISEEDLAANDILDYKDDDDKV

**Restriction Sites:**

Sgfl-RsrII

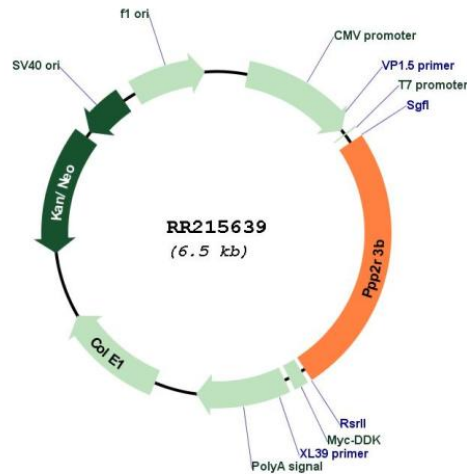
Cloning Scheme:

Cloning sites used for ORF Shuttling:



\* The last codon before the Stop codon of the ORF

Plasmid Map:



ACCN: NM\_001139492

ORF Size: 1656 bp

OTI Disclaimer: The molecular sequence of this clone aligns with the gene accession number as a point of reference only. However, individual transcript sequences of the same gene can differ through naturally occurring variations (e.g. polymorphisms), each with its own valid existence. This clone is substantially in agreement with the reference, but a complete review of all prevailing variants is recommended prior to use. [More info](#)

OTI Annotation: This clone was engineered to express the complete ORF with an expression tag. Expression varies depending on the nature of the gene.

Components: The ORF clone is ion-exchange column purified and shipped in a 2D barcoded Matrix tube containing 10ug of transfection-ready, dried plasmid DNA (reconstitute with 100 ul of water).

**Reconstitution Method:**

1. Centrifuge at 5,000xg for 5min.
2. Carefully open the tube and add 100ul of sterile water to dissolve the DNA.
3. Close the tube and incubate for 10 minutes at room temperature.
4. Briefly vortex the tube and then do a quick spin (less than 5000xg) to concentrate the liquid at the bottom.
5. Store the suspended plasmid at -20°C. The DNA is stable for at least one year from date of shipping when stored at -20°C.

**RefSeq:** [NM\\_001139492.1](#), [NP\\_001132964.1](#)

**RefSeq Size:** 2311 bp

**RefSeq ORF:** 1659 bp

**Locus ID:** 682033

**Cytogenetics:** 14p22

**MW:** 60.1 kDa