

Product datasheet for **RR215619**

Jph4 (NM_001003711) Rat Tagged ORF Clone

Product data:

Product Type:	Expression Plasmids
Product Name:	Jph4 (NM_001003711) Rat Tagged ORF Clone
Tag:	Myc-DDK
Symbol:	Jph4
Vector:	pCMV6-Entry (PS100001)
E. coli Selection:	Kanamycin (25 ug/mL)
Cell Selection:	Neomycin



[View online »](#)

ORF Nucleotide Sequence:

>RR215619 representing NM_001003711
 Red=Cloning site Blue=ORF Green=Tags(s)

TTTTGTAATACGACTCACTATAGGGCGGCCGGGAATTCGTCGACTGGATCCGGTACCGAGGAGATCTGCC
 GCC**CGGATCGCC**

ATGCATGTCCCCCTGGGGCGCAAGTTGCACTTTGACGACGGGGGCTGCTACGTGGGGGGCTGGGAGGCGG
 GCGGGGCACATGGCTACGGCGTGTGACACGGGGCCCGCGCCAGGGAGAGTACAGCGGCTGCTGGGCTCA
 CGGCTTCGAGTCGCTGGGTGTCTTCACGGGGCCCGCGGACACAGTTACCAGGGCCACTGCGAGCAGGGC
 AAGCGCAAGGGCTGGGCGTGGAGCGCAAGAGCCGCTGGACCTACCGCGGCGAGTGGCTGGGCGGGCTGA
 AGGGGCGCAGCGGCGTGTGGGAGAGCGTGTCCGGCCTGCGCTACGCCGGGCTCTGGAAGGACGGCTTCCA
 GGACGGCTACGGCACCGAGACCTACTCCGATGGAGGCACCTACCAAGGCCAGTGGCAAGCCGGAAAAACGC
 CATGGCTACGGGTACGCCAGAGTGTACCTACCACAGCGCGCCTTCTGCGCTACCCCGCCGACCT
 CCCTGGACTCCGGCCACAGCGACCCCGACGCCCTCCACCCCTACCCCTACCAGGAGATGAAGGAGG
 CAGCCCTGCCTCCGGCTCCAGAGCGGGTTCGTAAGCGCAGCGAGTGGTACTGGCGGGCCAGGGGACGCCGATGGGGCGTCTTCC
 CGTAAGCGCACCCAGCAGCAGGTGGATTCTTCCGCCGTTCACTGCTGCTCAGCGGGCTCCGGGGCTGGTG
 GGCGCCGAGCTCCCTGGGCAGCAAGAGGGGATCACTACGAAGCGAGGTGAGCAGCGAAGTGGGCAGTAC
 AGGACCCCGGGCTCCGAGGCCAGCGGGCCCTATCCCAGCGCCACCTGCCCTCATCGAGGGCTCTGCC
 ACTGAGGTGTACGCCGTGAGTGGCGTGGCGACCCGGCGCAGTGGCTACGGAGTGAGCCAGAGATCCAACG
 GGCTGCGCTATGAAGGCGAGTGGCTGGGCAACCGACCGGCACGGATACGGGCGCACCCCGGGCCGATGG
 CTCCCGTGAAGGAGGGCAAGTACAAGCGCAACCGGCTGGTACACGGGGGACGTGTCCGAGCCTCTGCCT
 CTGGCCCTTAGACGGGGCAAAGTCAAGGAGAAAGTGGACAGGGCTGTGAAAGTGCCTCGAGCTGAGTGA
 GTGTGCCCGCCAGCGCCAGGAAATGCTGCTGCCAGGGCAGCAGACGCCCTCTCAAAGCAGTGGCAGC
 CAGCAGCGTCCGGGAGAAGGCCCTGGAGGCGCGCGGATGGCCAAGCTGATAGCCAGGATCTACAACCC
 ATGTTAGAGGCCCCAGGCCGAGACCCCGACAGGATTCTGGAGTTCTGACACAGAGCCTTTGGATGAGG
 ACAGCCCCGGGTATACGAGAATGGACTGACCCCTCAGAGGGATCTCCGGAAGTCCCAGCAGCCTCTGC
 TTCCTCCACCAACCTTGGCGGGCCCTCCCTGCCGGAGCCACTGCCTCCCGAGGGAAGTGGGGCCCC
 TTCTCCAGTCTAAAGCTTGGCCTGAGGAGTGGGGGGTCTGTTGAGCAGGCAGAGGAAGTGGCTGGCT
 ATGAGGCTGAGGATGAGGCTGGGATGCAGGTCAGGACCGAGAGATGGTCCCCACTTCTCGGAGGCTG
 CAGTGACAGTTCAGGAAGTCTTCGAGAGGAGGAAGGGGAAGTGAAGAGTCTTGCACAGTGAAGGCCC
 CCAGGAGGCTCAGAATCTGAGCCTGTCAACTCCAGTTTGGAGGGCCTGTCTCAAGGGTCTGATG
 CTGGGTGCTGACAGAAGAGTTTGGAGGCGCTGCTGCCACCGAGAGGCGCTGCCAGCCGGGAGCTGCCAA
 CCCCTGGTGGTAGGAGCTGTGGCTTGTGGATCTCAGCCTGGCGTTCCTGTTCTCCAGCTCCTCACC

ACGCGTACGCGGCCGCTCGAGCAGAACTCATCTCAGAAGAGGATCTGGCAGCAAATGATATCCTGGATT
 ACAAGGATGACGACGATAAGGTTTAA

Protein Sequence:

>RR215619 representing NM_001003711
 Red=Cloning site Green=Tags(s)

MHVPLGRKFDFFDDGGCYVGGWEAGRAHGYVCTGPGAQGEYSGCWAHGFESLGVFTGPGGHSYQGHWQQG
 KREGLGVERKSRWYRGEWL GGLKGRSGVWESVSLRYAGLWKDGFQDGYGTETYSDDGGTYQGQWQAGKR
 HGYGVRQSVPYHQAALLRSPRRTSLDSGSDPPTPPPPLPLPGDEGGSPASGSRGGFVLAGPGDADGASS
 RKRTPAAGGFFRRSLLL SGLRAGRRSSLGSKRGLRSEYSSEVGSTGPPGSEASGPPIPAPPALIEGSA
 TEVYAGEWRADRRSGYGVQSRSNGLRYEGEWLGNRRHGYRTRPDGSREEGKYKRNLVHGGRVRSLLP
 LALRRGKVKEDRAVEGARRAVSAAQRQEI AAARAADALLKAVAASSVAEKAVEAARMAKLI AQDLQP
 MLEAPGRRRPRQDSGGSDTEPLDEDSPGVYENGLTPSEGSPELPSASPASHQPWRAAPCRSPLPPGGNWGP
 FSSPKAWPEEWGGPGEQAEELAGYEADEAGMQGPGPRDGSPLLGGCSDSSGSLREEEGEDEESLPQLRA
 PGGSESEPVTTPVLRGLSSRGPDAGCLTEEFEEPAATERPAQPGAANPLVVGAVALLDL SLAFLFSQLLT

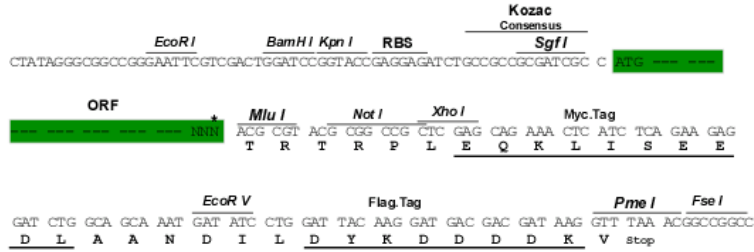
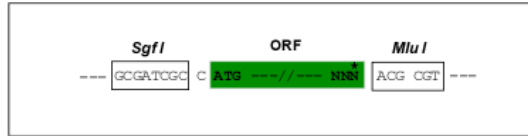
TRTRPLEQKLISEEDLAANDILDYKDDDDK**V**

Restriction Sites:

Sgfl-MluI

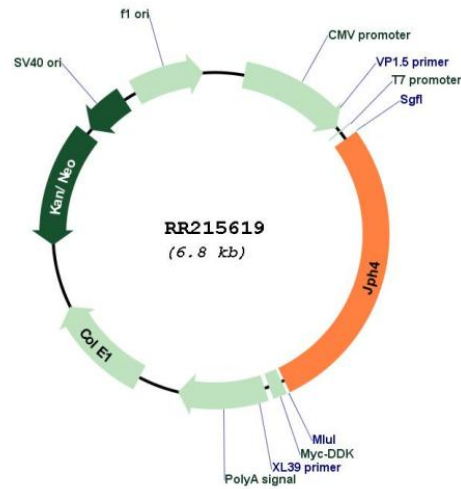
Cloning Scheme:

Cloning sites used for ORF Shutting:



* The last codon before the Stop codon of the ORF

Plasmid Map:



ACCN: NM_001003711

ORF Size: 1890 bp

OTI Disclaimer:	The molecular sequence of this clone aligns with the gene accession number as a point of reference only. However, individual transcript sequences of the same gene can differ through naturally occurring variations (e.g. polymorphisms), each with its own valid existence. This clone is substantially in agreement with the reference, but a complete review of all prevailing variants is recommended prior to use. More info
OTI Annotation:	This clone was engineered to express the complete ORF with an expression tag. Expression varies depending on the nature of the gene.
Components:	The ORF clone is ion-exchange column purified and shipped in a 2D barcoded Matrix tube containing 10ug of transfection-ready, dried plasmid DNA (reconstitute with 100 ul of water).
Reconstitution Method:	<ol style="list-style-type: none">1. Centrifuge at 5,000xg for 5min.2. Carefully open the tube and add 100ul of sterile water to dissolve the DNA.3. Close the tube and incubate for 10 minutes at room temperature.4. Briefly vortex the tube and then do a quick spin (less than 5000xg) to concentrate the liquid at the bottom.5. Store the suspended plasmid at -20°C. The DNA is stable for at least one year from date of shipping when stored at -20°C.
RefSeq:	NM_001003711.1 , NP_001003711.1
RefSeq Size:	1893 bp
RefSeq ORF:	1893 bp
Locus ID:	445271
UniProt ID:	Q69FB3
Cytogenetics:	15p13
MW:	66.4 kDa
Gene Summary:	Junctophilins contribute to the formation of junctional membrane complexes (JMCs) which link the plasma membrane with the endoplasmic or sarcoplasmic reticulum in excitable cells. Provides a structural foundation for functional cross-talk between the cell surface and intracellular calcium release channels. JPH4 is brain-specific and appears to have an active role in certain neurons involved in motor coordination and memory (By similarity). [UniProtKB/Swiss-Prot Function]