

Product datasheet for **RR215606**

Siglec10 (NM_001106250) Rat Tagged ORF Clone

Product data:

Product Type:	Expression Plasmids
Product Name:	Siglec10 (NM_001106250) Rat Tagged ORF Clone
Tag:	Myc-DDK
Symbol:	Siglec10
Synonyms:	Siglecg
Vector:	pCMV6-Entry (PS100001)
E. coli Selection:	Kanamycin (25 ug/mL)
Cell Selection:	Neomycin
ORF Nucleotide Sequence:	>RR215606 representing NM_001106250 Red=Cloning site Blue=ORF Green=Tags(s)

TTTTGTAATACGACTCACTATAGGGCGCCGGAATTCGTCGACTGGATCCGGTACCGAGGAGATCTGCC
GCC**GCGATCGCC**

ATGCTCTGCCAGGGAGAAGGCCCTGGCCTGCCTGGAGCCAGTCCCCGCTTTCATTGCAGATCCACCAG
AGGACCTGAGAGTGACTGTTTACAAGAAAACAGAACAGTGTGGAAATCCTCAGGAATGGCACCTCCCT
CCCAGTCTGGAGGGCCAAAGCCTGTGCCTAGTGTGTGCACCTATAGCAATCCCCAGCCAGTGTGAGC
TGGTTTGGGGCGACACAGACCCTGATCCCCACCCAGTCTTCAGAGCCTGGGGTGTGGAGCTGCCTCTGG
TCCAGAGAGAACATGAAGGAGAACTCACCTGTGCTGCACAGAGCCCACTGGGCACCCAGCGCATCTCTCT
GAGCCTCTCTGTGCACTACCCACCCAGATGTCCAGACCCTCCTGCTCCTGGGATTCTGAGGGTCTGCAC
TGCAGCTGCTCCTCCAGAGCCTGGCCTGCCCCCTCCTTGGCGTGGCGGCTGGGGGAGGGGCTGCTGGAGG
GAAACAGCAGCAATGCCTCCTTCAAGGTCACCTCCAGCTCACTTGGACCTGGGCCAACAGCTCCCTGAG
CCTCCTCAGGAGCTGGAACCCAGCCTCTGGCTCAGCTGTGAAGCCTGGAACCCCATGGGGCCAGACC
ACCTCTGCTCTGCTACCTGATAAAAAACAGTCCGAGCATTCTCAAGGGAGCAGCTTTGGGCTTTG
GCATTACAGCCCTCCTTGCCTCTGCCTCGTGCATCATGAAGACCCTACAGAAGAAGGAACCCA
AGAGGTAACCTCAAGGCCAAAATCTCACGGGGCAGCACAATCCTGGATTACATCAATGTGGTCCCCAAG
ACCAGGTCGCCGCTCGGAATTGAAAGCTGAACCAGACACCCCTTCTGGGATTTCCGCCCTGGACTC
ACTCCCTAAACCAAAGAAGAAGCAGAAGGACCCACGTTTTACATCCCCTGGTTTCCAGACCCAGACC
ATCCTCTCAGGCCCCAGTCTCTGAAAATAACCCAGAAGAACTCCATTATGCTGCTCTCAACTCCCCCGC
CTCAGACTACGGGAGACCAGAACCCCCAAGACACCTATTCTGATTACGCAGAAGTCAGAGTTTCAT

ACGCGTACGCGGCCGCTCGAGCAGAAACTCATCTCAGAAGAGGATCTGGCAGCAATGATATCCTGGATT
ACAAGGATGACGACGATAAGGTTTAA



[View online »](#)

Protein Sequence: >RR215606 representing NM_001106250
 Red=Cloning site Green=Tags(s)

MLCPGRRPWPASQFPVFIADPPEDLRVTVSQENRTVLEILRNGTSLPVLEGQSLCLVCVTYSNPPASVS
 WFGATQTLIPTQSSEPGVLELPLVQREHEGELTCAAQSPLGTQRISLSLVHYPPQMSRPSCSWDSEGLH
 CSCSSRAWPAPSLRWRLGEGLEGNSSNASFKVTSSSLGPWANSSLQLQLEPSLWLSCEAWNTHGAQT
 TSVLLLLPDKNSSAAF SKGAALGFGITALLALCLVVIIMKTLQKKGTEVT SRPKISRGSTILDYINVPK
 TRSPARNWKAEPDTPSGISPLDTHSPKPKKKQKDPFRFTSPGFDP RPSSQAPVSENNPEELHYAALNFPR
 LRLRETQNPQDTYSDYAEVRVH

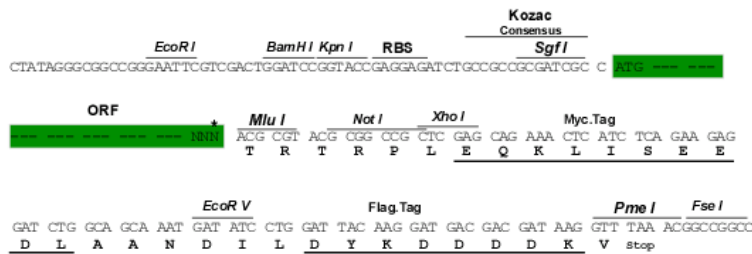
TRTRPLEQKLISEEDLAANDILDYKDDDDKV

Restriction Sites:

Sgfl-MluI

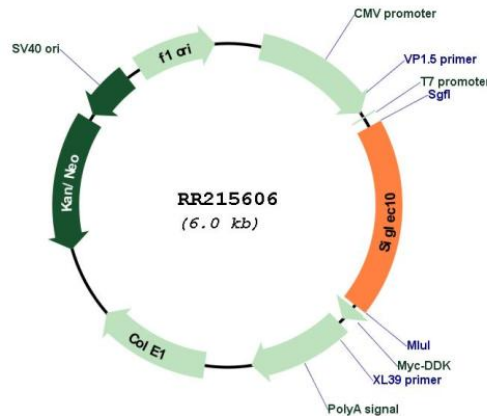
Cloning Scheme:

Cloning sites used for ORF Shuttling:



* The last codon before the Stop codon of the ORF

Plasmid Map:



ACCN: NM_001106250

ORF Size:	1116 bp
OTI Disclaimer:	The molecular sequence of this clone aligns with the gene accession number as a point of reference only. However, individual transcript sequences of the same gene can differ through naturally occurring variations (e.g. polymorphisms), each with its own valid existence. This clone is substantially in agreement with the reference, but a complete review of all prevailing variants is recommended prior to use. More info
OTI Annotation:	This clone was engineered to express the complete ORF with an expression tag. Expression varies depending on the nature of the gene.
Components:	The ORF clone is ion-exchange column purified and shipped in a 2D barcoded Matrix tube containing 10ug of transfection-ready, dried plasmid DNA (reconstitute with 100 ul of water).
Reconstitution Method:	<ol style="list-style-type: none">1. Centrifuge at 5,000xg for 5min.2. Carefully open the tube and add 100ul of sterile water to dissolve the DNA.3. Close the tube and incubate for 10 minutes at room temperature.4. Briefly vortex the tube and then do a quick spin (less than 5000xg) to concentrate the liquid at the bottom.5. Store the suspended plasmid at -20°C. The DNA is stable for at least one year from date of shipping when stored at -20°C.
RefSeq:	NM_001106250.1 , NP_001099720.1
RefSeq Size:	2373 bp
RefSeq ORF:	1119 bp
Locus ID:	292844
Cytogenetics:	1q22
MW:	40.8 kDa