

## Product datasheet for RR215535

### Bicra (NM\_001106226) Rat Tagged ORF Clone

#### Product data:

Product Type: Expression Plasmids  
 Product Name: Bicra (NM\_001106226) Rat Tagged ORF Clone  
 Tag: Myc-DDK  
 Symbol: Bicra  
 Synonyms: Gltscr1  
 Vector: pCMV6-Entry (PS100001)  
 E. coli Selection: Kanamycin (25 ug/mL)  
 Cell Selection: Neomycin  
 ORF Nucleotide Sequence: >RR215535 representing NM\_001106226  
 Red=Cloning site Blue=ORF Green=Tags(s)

TTTTGTAATACGACTCACTATAGGGCGCCGGAATTCGTCGACTGGATCCGGTACCGAGGAGATCTGCC  
 GCC**CGATCGCC**

ATGGATGATGAGGATGGGAGATGCTTACTAGACGTGATTTGTGACCCCTCAGGCCCTCAATGACTTCTTGC  
 ATGGATCCGAAAAGCTGGACAGTGATGACTCCTGGATGCCCTGTGGAGGCCAAAGTGCCTTCTATGA  
 AGGTCCTGGGCTCCATGTGCAGGAAGCTGCCGGCAACCACCTGAACCCTGAGCCAGCCAACCTGCCCC  
 AGCGTGGACCTGGACTTCTAGAAAGATGATATCCTGGGCTCCCTGCAGCAGGAGGAGGTGGAGGGGGCG  
 GCGGGGGCCAGACCAGCCCTGTGACATTTCTCAGCAGAGTCTTCAGGAGGCCAATCAGAGAGCAGAC  
 CCTGGAGGCTGAGGCTGAACTGGACCTGGGCCCTTCCAGCTGCCACCCTACAGCCCGCTGACGGCGGG  
 GCAGGTGCTACTGGAGCTGCAGGAGCTGCTGCAGTGACCCGAGGGCCCAAGGCTCTTCCAGGCAGCG  
 CAGATCTGCTGGGGCTGCAAGCCCCGCCACTGTACTTACCCACCAGGCCTTGGTGCCACCCAGGATGT  
 GGTCAACAAGGCCTGAGCGTCCAGCCCTTCTACAGCCCGTGGGCTGGGCAATGTGACCCCTCAGCCC  
 ATTTCAAGGCTCCAGGCCTTCCCAATGGCAGTCTGGGGCGCTACAGCAGCCACTTTGGTCTGGCAC  
 CTATTTCAAGTGGTGGCCAGCCCGTCAATCCACCCACTCCAGCTTTGGCAAAGCAGGT  
 GCCTGTCAAGTGGCTACCTGGCTCCGACGCTGGTCTTACAGAGCCAGTGACACTGGCATCTGCCGGCGTG  
 TCCCCCAGGGAGCCGGCCTAGTCATCCAGAAAAATCTTCCAGCCGACGTGACCACCACACTCAACGGGA  
 ACTCAGTCTTTGCCGGGACAGGGTCTGCCACTGCAGCAGCCAGTGGGGCACCCCTCGGGACAGCCGCTGGC  
 GGTGGCCCCGGGCTTGGCAGTCAACTGGTACAAGCACCAATGTGATTTTACAGAAACCCCTACG  
 CCCATCCAGCCCAAGCCTGCAGGGTACTGCCCCCAACTCTACCAGCTGACCCCAAGCCCTTACCC  
 CCACGGGAGCCACCCTTACCATCCAGGGTGAAGCCAGCCACTTGGCCAGCAGCCTAAGGCCCCAGAA  
 CCTGACTTTTATGGCCGAGGCAAAGCTGGTCAGAACGTGGTGTCTAGCTTCCAGCACCAGGCTTTG  
 CAGGCGAATGTATTCAAGCAGCCACCAGTCAACCACCGGGACAGCCCGCCACAGCCACCCGGGGCCC  
 TCAGCAAACCCATGAGCGTCCACCTCCTCAATCAAGGCAGTAGCATCGTGATCCAGCCAGCACATGCT  
 GCCTGGCCAGAACCAGTTCTTGCTGCCAGGCACCTCGGCTGTACAACACCCAGTCACTTTCTGCCCTG  
 CCTGCCAACGTGGGAGGCCAGATCCTCAGCCGACGACCACATGCAGGTGGACAGCTCATTGCCAAC



CAATCCTACCAACCAGAACCTGGCAGGCCCACTAAGTCTGGGCCAGTCTGGCACCCCACTCTGGGGC  
 ACACAGCGCTGCGCACATCCTCTCTGCAGCTCCCATCCAGGTGGGCCAGCCTGCCCTCTCCAGATGCT  
 GTGTGCGTGGCCACTGGCAGCCTGCCACTCAGAGCCAGCCAGCTCCCCTGGCCCCACAGCCACCACCG  
 TCCTCCAGGGTGTACCCCTGCCTCCCAGTGTGTGGCCATGCTTAACACACCTGATGGGCTAGTGCAGCC  
 CTCAACCCAGCTGCCACCACTGGGGAAGCCACACCTGTTCTGGCCGTTCAACCTGCCACCCAGGTACCC  
 CCTGCTGTACCAACCACTGCCTATGGGTCTCCAACAGTCCCGGCACAGCAGCCTCCACAGGCCCTA  
 CTCCACAGGCGGCCACCCAGCCTCAGGCCACCCCTCCTCAGGCCAGTCCAGGCCATCCAGCCACAG  
 GAAGATAGTCTGGGGCAGGCGCCCCCTGCGGCCACAACGCCATCCTCACTCAGGATTCCCTCCAGATG  
 TTCTGCCCCAGGAGAGGAGCCAGCAGCCCTCTACAGAGGGTCCCCACCTCTCGGTGCCTGCCTCCG  
 TCATAGTCAGCGCCCCGCTCCTGCCAAGACCCAGCCCTGGCCACGCCCCGTACCAAAGGAGTGGCT  
 TGGCGCTCAGACCCCGACAACCGGGTCCCCAGCTCCAGCTCCCAGATCCCAGCAGTGTCTCCACTG  
 AAAGCCCTGGCCTGCCTCCTCCCATCACTACCTACCAGGCCCCCTGGGAGACAGTCCCACATGC  
 CCTCCCCACACCTGCCAGGCCCTTCCCGCCACCCTCGAGACCCACTACGCCCTCCATCCCAGCC  
 CCAGAGCCTGACCTGCCACCCCTCGAGCCACCCTGCACCTTGCCCTCACCCAGGGTCCCCAACT  
 CTACCTGGCATCTTTGTATCCAGAATCAATTGGGTGCCACCACCAGCCAGCACCCACGCCCCACAG  
 CCCCAGGCCACCCAGCCCTCTGCGACCCCATCCCAGCCTCCTGAGGGCCATTGCCCCAGCCTC  
 CCACCTCCCTCCTGCCTCCACCCCTTCCGCTGTGGCTCCTCCTCTGAGCCTTCTACCAGTTGCCAGTC  
 CCCACACCCCTGACTTCCAGTTCCCACAGGCCAGGGACCCATAAGTCCCCCACTCCACCACCAGCCC  
 TCCATTTGGTCCCTGAGCCACGGCACCCCTCCTCCACCACCTCGGACCTTCCAGATGGTAACTGCCCC  
 CTTCCAGCGTGGCCAGCCAAAGCACTTCTGGAACGATTCCACCAGGTGCCATCTGGGATTATTCTC  
 CAGAATAAGGCTGGGGTACTCCCACCACCCACAGACATCCACCACCCTGGGGACCCTCACCAGTCTA  
 CTGCCTGTGTAGTCAGTGGACAGGCACCACCTGGGACTCCTGCTGCCTTAGCCATGCCACAGCCTC  
 CACACCTATGGCCACCACAGGTCTCCCTCCTACTTCTGCGAAAACAAAGCTTTTGCAGAACCTT  
 CCAACCTGAGTGTGGCCAAAGTACTGTGTCTGGGCCAGGGAAGTCCCCAGCGATGCAGTATGACAGCA  
 AGTTGGGTAGCCTGAAGAAACAGCCCTTCTGCAACCCAGCAAAGAAGCCTGTTCTTGGAGCATCTGCA  
 CAAACATCAGGGTCTGTCTGCACCCTGATTACAAGACAGCTTTCCCTCCTTTGAGGACGCCCTCCAT  
 CGCCTCCTGCCCTACCATGTCTACCAAGGGCCCTCCCTCCCCCAATGACTACCATAAAGTGGATGAAG  
 AATTTGAGACTGTCTCTACGCAGCTGCTCAAACGTACCCAGGCCATGCTCAATAAATATCGGCTTTTGT  
 TCTGGAAGAGTCCAGGAGAGTCACTCCTCCGAGAGATGGTTATGATCGACCGAATGTTCAATCAGGAG  
 GAGAAGACCACCTTGCCTTGGATAAGCAGCTCGCCAAGGAGAAACCTGATGAGTATGTGTCTTCCCTCC  
 GCTCCCTTGGCTTCCCTGTCCCAGTGTCTTCCGAGGGTACCCGGTCCCCAGCCACGGCCATCTTCTTC  
 ATCCTCCACATCTGGAACATCTGCCAGCCCCCTCCTCACCCGCCACCAAGCTAGTGATCCGGCATGGC  
 GGAGTGGCGGCTCCCCCTCAGTGACCTGGGCCGGGCATCATCCTCCTTGTATCAACGTCTCATCCT  
 CATCCTCATCCTGTGCGCTCATCCCTGGACGCAGATGAGGACGGCCCCATGCCCTCCCGTAGCCGGCC  
 ACCCATTAAGACCTATGAGGCCCGGAGCCGATTGGCTCAAACCTCAAGTCAAGCAGGAGGCGGGGCTC  
 AGCAAGGTGGTGCACAACACTGCATTGGATCCTGTACACCAGCCCTTGCCTGCTCCAACCCCTGCAAAA  
 GGGCTGAACCTCCGCCACACCCAGCTCCTCCCCACTCCCACCTGCCACCCAGGCACAGATGAATGGCAC  
 TCTGGACCATCCCCACCCATAGTACGCAAACCCAGGTGCTGCGTCTGCCACGTCTACCACTGCGC  
 AAGACCTACCGAGAAAACATGGGCGATCCTAGTGCCACTGAGGGTGCACAGGGACGGCCGGGGGTGCGG  
 GCAGCCCCACCCACTGCCACCAAGGTAGACGAAGCCACCAGTGGGCTGATCCGGGAGCTGGCAGCGGT  
 GGAGGACGAATTGTATCAGCGGGTCTGAAGGGCGGCCACCACCCCGAGACCCAGCCTCTGCTACT  
 AGCCAAGGCCCCACAGAATCTGGTTGGGAAGCACCCATGCTACCCCAACCAAACGACGCAAGTCTGAGT  
 CCCCAGCAGTGGACAGGCCAGTCTCTAGTGACAGCCCGCAGGATGATACTCACTGAGCATTGCA  
 GAGTGCCATCGACAGCATCCTTAACCTGCAGCAGGCCCGCCGGACACCTGCAGGCCATACCCCAT  
 ACGGGCCCCACGCTGGCACCCACATCCCAGCTCCTCTGCACAGGCTGACGCCTTCCACCCCTCTA  
 GTCACAATGGTGGCTCGCGCCAGGACGTTGAACAGA

ACGCGTACGCGGCCGCTCGAGCAGAACTCATCTCAGAAGAGGATCTGGCAGCAAATGATATCCTGGATT  
 ACAAGGATGACGACGAT AAGGTTTAA

Protein Sequence: >RR215535 representing NM\_001106226  
 Red=Cloning site Green=Tags(s)

MDEEDGRCLLDVICDPQALNDFLHGSEKLDSDLLDAPVEAQSFAFYEGPLHVQEAAGNHLNPEPSQPAP  
 SVDLDFLEDDILGSPAAGGGGGGGGPDQPCDILQQSLQEANITEQTLEAEALDLGPFQLPTLQPADGG  
 AGATGAAGAAAVTAGPQALFPGSADLLGLQAPPTVLTHQALVPPQDVVNKALSVQPFLLQPVGLGNVTLQP  
 IQGLQGLPNGSPGGATAATLGLAPIQVVGQPMALNPPTSQLLAKQVPSVGYLASAAGPSEPVTLASAGV  
 SPQAGLVIQKNLPAAVTTTLNGNSVFAAGTGSATAAASGAPSGQPLAVAPGLGTSPLVQAPNVILHRTPT  
 PIQPKPAGVLPKLYQLTPKPFPTGATLTIQGEPTLPQQPKAPQNLTFMAAGKAGQNVVLSFPAPAL  
 QANVFKQPPVTTTGTAPPQPPGALSKPMSVHLNQGSSIVIPAQHMLPGQNQFLLPGTSAVQLPQSLSAL  
 PANVGGQILTAAAPHAGGQLIANPILTNQNLGAPLSLGPVLAPHSGAHSAAHLSAAPIQVQPALFQMP  
 VSLATGSLPTQSQPAPTATTVLQGVTLPPSAVAMLNTPDGLVQPSTPAATTGEATPVLAVQPATQVP  
 PAVTTPLPMGLQQSPAQQPPQAPTPQAATQPQATPPQASPLASSPEKIVLQAPPAATTAILTQDSLQM  
 FLPQERSQQPLSTEGPHLSVPASVIVSAPPPAQDPALATPVTKGAGLGAQTPDNRASAPAPQIPAAAPL  
 KAPGPASSPSLPHQAPLGDSPHMPSPHARPPSRPPSRPHSRPPSQPQSLTCPPEPTLHPCPPQGPPT  
 LPGIFVIQNQLGAPPPASTPAPTAPGPPQPLRPPSQPPEGPLPPASHLPPASTPSAVASSSEPSTRLPV  
 PTPPDFQFPQGPHKSPTPPALHLVPEPTAPPPPPRTFQMTAPFPALPQPKALLERFHQVPSGIIIL  
 QNKAGGTPPTQTSTLGLTSTASVLSVQAPPPTAASSHAPASTPMATTGLPPLLPAENKAFASNL  
 PTLVAKATVSGPGKSPAMQYDSKLGSLKKQPLLQPSKEACFLEHLHKHQGSVLPDPYKTAFFPSFEDALH  
 RLLPYHVYQGALPSPNDYHKVDEEFETVSTQLLKRTQAMLNKYRLLLLLEESRRVSPSAEMVMIDRMFIQE  
 EKTTLALDKQLAKEKPDEYVSSSRSLGFPVPSSEGHRLPSHGSSSSSTSGTSAQPPHPPTKL VIRHG  
 GAGGSPSVTWARASSLSSTSSSSSSSSVASSLDAEDGPMPSRSPRIKTYEARSRIGLKKIKQEAAGL  
 SKVVHNTALDPVHQPLPAPTPAKGAEPHPAPPPLPAPTQAQMNGTLDHPPPIVRKPTVPASCRLPLR  
 KTYRENMGDPSATEGAQGRPRGASPTPLPTKVEATSGLIRELAAVEDELYQVRLKGGPPPETPASAT  
 SQGPTESGWEAPMLPPTKRRKSESPVDQASFSDDSPQDDTLTEHLQSAIDSILNLQQAPGRTPAGPYPH  
 TGPTPGTPTSPAPLHRPDAFPSSSHNGGLGARTLNR

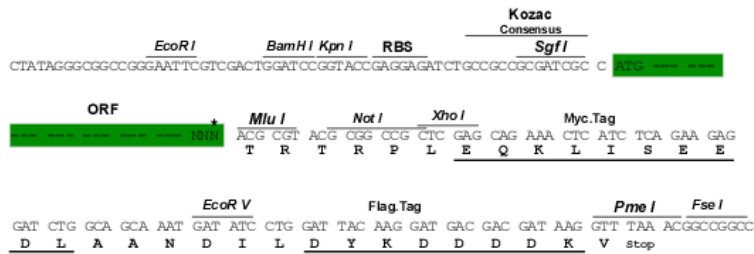
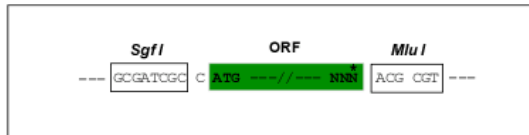
TRTRPLEQKLISEEDLAANDILDYKDDDDKV

Restriction Sites:

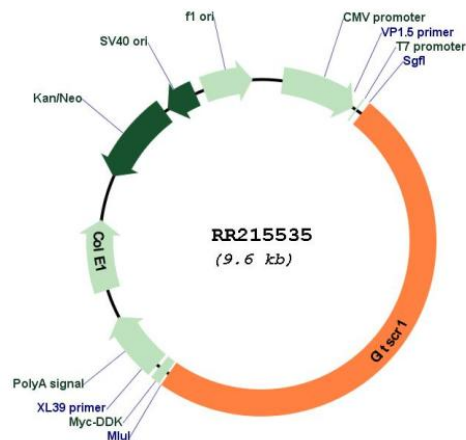
SgfI-MluI

Cloning Scheme:

Cloning sites used for ORF Shuttling:



\* The last codon before the Stop codon of the ORF

**Plasmid Map:**


**ACCN:** NM\_001106226

**ORF Size:** 4728 bp

**OTI Disclaimer:** The molecular sequence of this clone aligns with the gene accession number as a point of reference only. However, individual transcript sequences of the same gene can differ through naturally occurring variations (e.g. polymorphisms), each with its own valid existence. This clone is substantially in agreement with the reference, but a complete review of all prevailing variants is recommended prior to use. [More info](#)

**OTI Annotation:** This clone was engineered to express the complete ORF with an expression tag. Expression varies depending on the nature of the gene.

**Components:** The ORF clone is ion-exchange column purified and shipped in a 2D barcoded Matrix tube containing 10ug of transfection-ready, dried plasmid DNA (reconstitute with 100 ul of water).

**Reconstitution Method:**

1. Centrifuge at 5,000xg for 5min.
2. Carefully open the tube and add 100ul of sterile water to dissolve the DNA.
3. Close the tube and incubate for 10 minutes at room temperature.
4. Briefly vortex the tube and then do a quick spin (less than 5000xg) to concentrate the liquid at the bottom.
5. Store the suspended plasmid at -20°C. The DNA is stable for at least one year from date of shipping when stored at -20°C.

**RefSeq:** [NM\\_001106226.2](#), [NP\\_001099696.2](#)

RefSeq Size: 5516 bp  
RefSeq ORF: 4731 bp  
Locus ID: 292622  
Cytogenetics: 1q21  
MW: 160.9 kDa