

Product datasheet for **RR215524**

Cuzd1 (NM_054005) Rat Tagged ORF Clone

Product data:

Product Type:	Expression Plasmids
Product Name:	Cuzd1 (NM_054005) Rat Tagged ORF Clone
Tag:	Myc-DDK
Symbol:	Cuzd1
Synonyms:	ERG1; Itmap1; Uo; UO-44; Utczp
Mammalian Cell Selection:	Neomycin
Vector:	pCMV6-Entry (PS100001)
E. coli Selection:	Kanamycin (25 ug/mL)



[View online »](#)

ORF Nucleotide Sequence:

>RR215524 representing NM_054005
 Red=Cloning site Blue=ORF Green=Tags(s)

TTTTGTAATACGACTCACTATAGGGCGGCCGGAATTCGTCGACTGGATCCGGTACCGAGGAGATCTGCC
 GCC**CGGATCGCC**

ATGGAGGTCACTGGAAGGCTGTTCATTTGGCCATTTAGCTGTCTCCTGTAGGGCAGCTCAATTCTA
 CAGCAGCTGAAGGCAGACCAAGATGCACGGCCAGTCTGGGAGGGCCAATCTGGGAGAGACCCACAAGGC
 TCTGATCCTAAATCTCAATGCTGATGAGAACTGCACCTGGACCATAGAGAGACCTGAAAACAGGAGCATC
 AGAATCATCTTCTCCACATCCAGTTGGATCCAGACAGTCGGTGTGAAAATGAAAGCATTAAAGGTGTTT
 ATGGACGCTCCACCAGTGGGCTCTGCTAGGGGAGGCCTGCAGCAAAAATGACTTCGTGCCTGTGTTTGA
 GTCATCGCCAATTCAGTACGTTTCAGATAGTCACTGACTGGACAAGGGTTCAAAGGAGTGTCTTTATC
 TTCTACTATTTCTTTCTCTGTTACCCTATTCCAACTGCGGTGGTTACCTGCAAACATTGGAAGGAT
 CCTTCAGCAGCCCAATTATCCAAGGCCACACCCTGAGCTGGCATACTGTGTGGCACATAACAAGTGA
 GAAAGGCTATAAGATAAACTTGAATTTACAGAGCTCTTCTAGAAATGGATGAATACTGCCGATTTGAC
 TTCATCGCAGTCTACGATGGCCCTCTACCACATCGGGCTTGCTCAAACAGGTGTGCGGCCGTGGGACAC
 CTACCTTTGAGTCTTCTCTGATGCCATGACTGTTGTGCTGTCTACAGATTATGCCAATTCCTACAGAGG
 CTTCTTTGCTTCTACGCTTCAACCTACGTACAAGAGGTCAACACTCACTCTTTAAGTTGTGCTTCTGAC
 AAGATGAGAGTCAATCAGCAAGTCACTACCTACAGTCACTTAACTACCATGAGAGCAATTTGCAGCTAA
 ACGACCCGACTTGCAGACCGAGTGTATCAAACGTTGTAGAGTTCTCTATCCCTCTGCATGAATGCGGTAC
 AATCAAAAAGTAGAGGACCACACTATCAGTTATACGAACATAATCACCTCACCCAGTCTCCAGAATCT
 GCCGTGATCACCCGAAAGAGGCACCTTCAGATTGTGGTACGTTGAGATGGAGTATAATTCAACTGTGG
 AGATTCTGTACATAACCGAAGACGACGTCATACAAAATCAAAGTGTCTGGGCAAAATACAACACCAGCAG
 GGCTCTTTATGAGTCCGGCTCCTTTGAAAACCTTATACAGGAGTACCCGATTATGTAGATTTGAACCAA
 ACCCTTTTTGTCCAAGCCACTTTGCACACCTCAGATCCAAGCCTGGTGGTGTCTTCTGGACACTTGCAGAG
 CCTCTCCACATCCGACTTTGCATCTCCAACCTATGACTTAATCAGCAGCGGGTGTAGTCGAGATGAGAC
 CTGTGAGGTGTACCCCTATTTGGGCACTACGGGAGATTCCAGTTCAATGCCTTTAAATCTTGAGACAT
 CTGAGTTCTGTATCTCAAGTGAAGATTTGATCTGTGATACCAGTGACCACACATCTCGCTGCAATC
 AAGGCTGCGTCTCAAGAAGGAAACGAGATTCCTTCATACAAATGGAAGACTGATTCTGTTATAGGACC
 AATTGCGCTGAAGAGGGACCGACTTGTAAATGGAGATTCCAGACTTCTGCCTCAAACACACGAAGCAGAG
 ATTTGGAAGCAGCTCTCAGCCATCTGCACCTGTTTTCCTTCATGTTCTTGCTCTGAATGTGGTATTG
 TGTCACAGCCACAGTGAGGCATTTCTAAATCGATGGAAGGATCACGGATACCAGAAGTCAGGTCTA
 C

ACGCGTACGCGGCCGCTCGAGCAGAACTCATCTCAGAAGAGGATCTGGCAGCAATGATATCCTGGATT
 ACAAGGATGACGACGATAAGGTTTAA

Protein Sequence:

>RR215524 representing NM_054005
 Red=Cloning site Green=Tags(s)

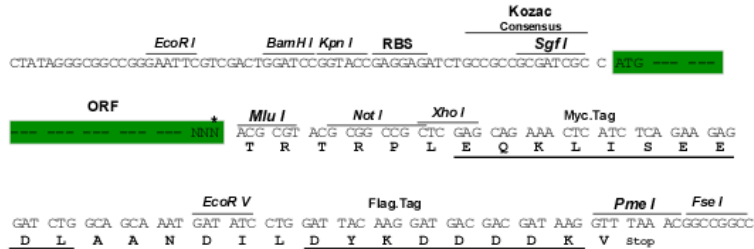
MEVTGRLFIWAILAVSCRAQLNSTAAEGRPRCTASLGGANLGETHKALILNLDADENCTWTIERPENRSI
 RIIFSHIQLDPDSRCENESIKVFDGRSTSGPLLGEACSKNDFVPVFESSANSLTFQIVTDWTRVQRSVFI
 FYYFFSSGTTIPNCGYLQTLGFSFSSPNYPRPHELAYCVWHIQVEKGYKINLNFTEL FLEMDEYCRFD
 FIAVYDGPSTTSGLLKQVCGRGTPTFESSDAMTVVLSTDYANSYRGGFFASYASTYVQEVNTHSLSCASD
 KMRVVIISKSYLQSLNYHESNLQLNDPTCRPSVSNVVEFSIPLHECGTIKKIEDHTISYTNII TFTQSPES
 AVITRKRLQIVVTCEMEYNSTVEILYITEDDVIQNQSVLKGKYNYSMALYESGSFENLIQESPYVYDLNQ
 TLFVQATLHTSDPSLVVFLDTCRASPTSDFASPTYDLISSGCSRDETCEVYPLFGHYGRFQFNAFKFLRH
 LSSVYLKCKILICDTSRDNQCVSRRKRDI PSYKWKTDVIGPIRLKRDRLVNGDSGLLPQTHEAE
 ISKQPLSHLHLFSFMVLALNVVIVVTATVRHFLNRWKDHGYQLQVY

TRTRPLEQKLISEEDLAANDILDYKDDDDKV

Restriction Sites: SgfI-MluI

Cloning Scheme:

Cloning sites used for ORF Shuttling:



* The last codon before the Stop codon of the ORF

ACCN: NM_054005

ORF Size: 1821 bp

OTI Disclaimer: The molecular sequence of this clone aligns with the gene accession number as a point of reference only. However, individual transcript sequences of the same gene can differ through naturally occurring variations (e.g. polymorphisms), each with its own valid existence. This clone is substantially in agreement with the reference, but a complete review of all prevailing variants is recommended prior to use. [More info](#)

OTI Annotation: This clone was engineered to express the complete ORF with an expression tag. Expression varies depending on the nature of the gene.

Components: The ORF clone is ion-exchange column purified and shipped in a 2D barcoded Matrix tube containing 10ug of transfection-ready, dried plasmid DNA (reconstitute with 100 ul of water).

Reconstitution Method:

1. Centrifuge at 5,000xg for 5min.
2. Carefully open the tube and add 100ul of sterile water to dissolve the DNA.
3. Close the tube and incubate for 10 minutes at room temperature.
4. Briefly vortex the tube and then do a quick spin (less than 5000xg) to concentrate the liquid at the bottom.
5. Store the suspended plasmid at -20°C. The DNA is stable for at least one year from date of shipping when stored at -20°C.

RefSeq: [NM_054005.1](#), [NP_446457.1](#)

RefSeq Size: 2282 bp

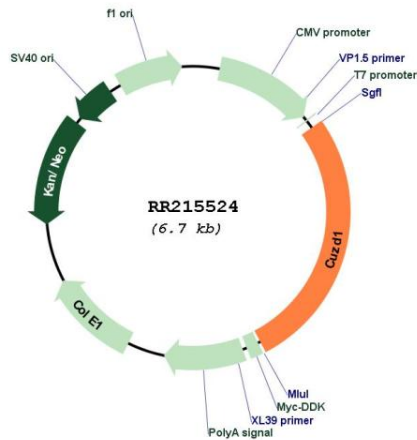
RefSeq ORF: 1824 bp

Locus ID: 117179

UniProt ID: [Q9QZT0](#)

Cytogenetics: 1q41
MW: 68.6 kDa
Gene Summary: protein specifically expressed in uterus and ovary and regulated by estrogen; may function in pregnancy [RGD, Feb 2006]

Product images:



Circular map for RR215524