

## Product datasheet for **RR215519**

### **Srek1 (NM\_020092) Rat Tagged ORF Clone**

#### **Product data:**

Product Type:	Expression Plasmids
Product Name:	Srek1 (NM_020092) Rat Tagged ORF Clone
Tag:	Myc-DDK
Symbol:	Srek1
Synonyms:	Sfrs12; Srrp86; Srsf12
Mammalian Cell Selection:	Neomycin
Vector:	pCMV6-Entry (PS100001)
E. coli Selection:	Kanamycin (25 ug/mL)



[View online »](#)

**ORF Nucleotide Sequence:**

>RR215519 representing NM\_020092  
 Red=Cloning site Blue=ORF Green=Tags(s)

TTTTGTAATACGACTCACTATAGGGCGGCCGGAATTCGTCGACTGGATCCGGTACCGAGGAGATCTGCC  
 GCC**CGCATCGCC**

ATGACAAGCCTGGTGCCTGGTGCAGGGCTGCTTCCATACCAACCTCCAGTCCACTGACGGCAGTGA  
 GTCTTGGCGTTTCACTTAGCAGTTTGGGAGCCATACCGGACGAGCACTGGACCCAAACATCACAGCACT  
 TGGAGAGATACCCAGCCACCCTTATGGGAAATGTGGATCCTTCTAAAATTGACGAGATTAGGAGAACA  
 GTTTATGTTGAAATTTGAATTCACAGACAACGACAGCTGATCAACTACTTGAATTTTTTAAACAAGTTG  
 GAGAAGTGAAGTTTGTTCGGATGGCAGGTGATGAGACTCAGCCAACTCGTTCGTTTGTGGAATTTGC  
 AGACAAAATTCTGTACCAAGGGCCCTTGTCTTAAATGGAGTTATGTTTGGAGACAGGCCGCTGAAAATA  
 AATCACTCCAACAATGCAATAGTAAACCTCCTGAGATGACACCTCAGGCTGCAGCTAAGGAGTTAGAAG  
 AAGTAATGAAGCGAGTGGGGAGGCTCAGTCATTTATCTCAGCAGCCATTGAACCAGAGTCTGAAAAGAG  
 CAATGAAAGGAAAGGCGGTGATCTCGTCCCACACTCGCTCAAAGTCCAGGTCTAGCTCAAAGTCCCAT  
 TCTAGAAGGAAGAGATCGCAGTCAAAGCACAGGAGTAGATCCCATAACAGGTCACGTTCAAGACAGAAAAG  
 ATAGAGCTAGATCCAAGAGCCCACATAAGAAACGCTCTAAGTCTAGGGAGAGGGCGAAGTCAAGGAGCCG  
 GTCGCGGTACGGGACAAGAGAAAAGATACCCGGGAAAAGGTGAAGGAAAGAGTGAAGGAGAGAGAAAAGG  
 GAAAAGGAAAAGGAAAAGGAAAAGGAGCGTGAAAAGACAAGGAACGGGGTAAAAACAAGATAAAGACC  
 GTGAGAAGGAAAAGGACCATGAAAAGGAGCGAGACAAAAGAAAAGGAGAAGGAACAAGATAAAGACAAGGA  
 ACGGGAAAAGACAGATCCAAGAGGCAGATGAAAACGGAAGAAGGAGAAGAAGTCTAGAACCACCGCCC  
 CGAAGCTACAATTCCTCAAGACGATCCCGTAGTGCCAGCAGGGAAAGGCGGAGGAGGAGAAGCAGGAGTT  
 CTTCTAGATCGCCAAGAACATCAAAGACCATAAAAAGAAAGTCTTCTAGTCTCCGTCCTCCAGGGGCCG  
 GAATAAGAAAAGAGAAAAGAGAGAGAAAAGAACGGGACCACATCAGTGACAGGAGAGAAAAGAGAGCGTTCC  
 ACCTCCACAAAAAGAGTTCTAGTGACCGAGACGGGAAGGAGAAGGTGGAGAAGACTAACACACCCAGTTA  
 AGGAGAAGGAACACAGTAAAGAGGCAGATTCAACTGTGAGCACCGATGCGGATGAGAAGGACACTGCCAG  
 GACTGAGGAGGAAAGTAAAGCACAGCACAATGGGAATTGCCAGCCCCACGAAGAGCGCCTGTGCAGCAGC  
 GCCGACGCTGTG

**ACGCGT**ACGCGGCCGCTCGAGCAGAAACTCATCTCAGAAGAGGATCTGGCAGCAAATGATATCTGGATT  
 ACAAGGATGACGACGATAAGGTTTAA

**Protein Sequence:**

>RR215519 representing NM\_020092  
 Red=Cloning site Green=Tags(s)

MTSLVPGAGLLIPTSSPLTAVSSLGVSLSSLGAIPAAALDPNITALGEIPQPPLMGNVDPKIDEIRRT  
 VYVGNLNSQTTTADQLLEFFKQVGEVKFVRMAGDETQPTRFAFVEFADQNSVPRALAFNGVMFGDRPLKI  
 NHSNNAIVKPPMTPQAAAKELEEVMKRVREAQSFISAAIEPESGKSNERKGGRSRSHRSKSRSSSKSH  
 SRRKRSQSKHRSRSHNRSRQKDRARSKSPHKRKSRRRRKRSRSDRKRKDTREKVKERVKERER  
 EKEKEREKEREKDKERGNKDKDREKEKDHEKERDKEKEKEQDKDKEREKDRSKEADEKRKKEKKSRTPP  
 RSYNSSRRRSASRERRRRRSRSSSRSPRTSKTIKRKSSRSPSPRGRNKKEKKREKERDHSRRRERERS  
 TSTKKSSDRDGKEKVEKTNPVKEKEHSKEADSTVSTDAEKDARTEEESKAQHNGNCQPHEERLCST  
 ADAV

**TRTRPLEQKLI**SEEDLAANDILDYKDDDDKV

**Restriction Sites:**

Sgfl-Mlul

**Cloning Scheme:**


**ACCN:** NM\_020092

**ORF Size:** 1482 bp

**OTI Disclaimer:** The molecular sequence of this clone aligns with the gene accession number as a point of reference only. However, individual transcript sequences of the same gene can differ through naturally occurring variations (e.g. polymorphisms), each with its own valid existence. This clone is substantially in agreement with the reference, but a complete review of all prevailing variants is recommended prior to use. [More info](#)

**OTI Annotation:** This clone was engineered to express the complete ORF with an expression tag. Expression varies depending on the nature of the gene.

**Components:** The ORF clone is ion-exchange column purified and shipped in a 2D barcoded Matrix tube containing 10ug of transfection-ready, dried plasmid DNA (reconstitute with 100 ul of water).

- Reconstitution Method:**
1. Centrifuge at 5,000xg for 5min.
  2. Carefully open the tube and add 100ul of sterile water to dissolve the DNA.
  3. Close the tube and incubate for 10 minutes at room temperature.
  4. Briefly vortex the tube and then do a quick spin (less than 5000xg) to concentrate the liquid at the bottom.
  5. Store the suspended plasmid at -20°C. The DNA is stable for at least one year from date of shipping when stored at -20°C.

**RefSeq:** [NM\\_020092.1](#), [NP\\_064477.1](#)

**RefSeq Size:** 1485 bp

**RefSeq ORF:** 1485 bp

**Locus ID:** 56763

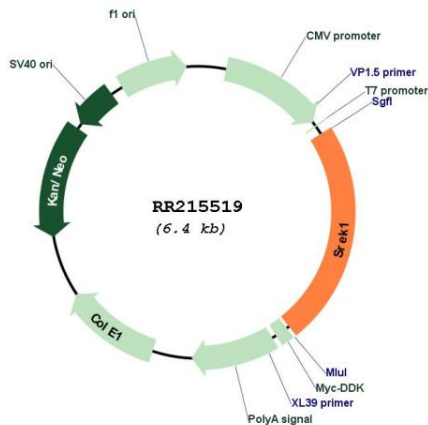
**UniProt ID:** [Q9JKL7](#)

**Cytogenetics:** 2q12

MW: 56.8 kDa

Gene Summary: comprises of a single amino-terminal RNA recognition motif and two carboxy-terminal domains rich in serine-arginine (SR) dipeptides [RGD, Feb 2006]

**Product images:**



Circular map for RR215519