

## Product datasheet for **RR215516**

### Zscan21 (NM\_001012021) Rat Tagged ORF Clone

#### Product data:

Product Type:	Expression Plasmids
Product Name:	Zscan21 (NM_001012021) Rat Tagged ORF Clone
Tag:	Myc-DDK
Symbol:	Zscan21
Synonyms:	Zipro1
Vector:	pCMV6-Entry (PS100001)
E. coli Selection:	Kanamycin (25 ug/mL)
Cell Selection:	Neomycin



[View online »](#)

**ORF Nucleotide Sequence:**

>RR215516 representing NM\_001012021  
 Red=Cloning site Blue=ORF Green=Tags(s)

TTTTGTAATACGACTCACTATAGGGCGGCCGGAATTCGTCGACTGGATCCGGTACCGAGGAGATCTGCC  
 GCC**CGCATCGCC**

ATGACCAAGTGGTGGGCATGGCCACAGTTCTGGCCCCAGGCCACCTCAGGAGTCTATGGACCTTCGC  
 CCATTAAGTTGAAGAGGATGAAGAAAAAGACAAGTGCCGCCCTAGCCTAGAGCTATCCCGAAAGCGCTT  
 CAGGCAGTCTAGAAACAGGACACTCTTGGCCATGGGACCTTCAACCTTAAAGCTGAAGAGGAGGAA  
 GACAAGGACAAGGGCCACCCTAGCCTAGAGCTATCCCGTAAGAGCTTCAAGCAGTTTGGGTACCATGACA  
 CTTTGGACAGTTGGGACCTTCGACTGTTAAAGCTGAAGAGGATGAAGAGAAGGACAAGGGCCGCCCTAG  
 CCTAGAGATATCCCGTCAGCGCTTCAGGCAGTTTGGGTACCATGACACTCCTGGGCCCGAGAGGCACTG  
 AGCCAGCTTCGGGTGCTCTGCTGTGAGTGGCTACAGCCTGAGATCCACACCAAGGAGCAGATTCTAGAGC  
 TACTGGTTCTGGAGCAGTTCTGACCATCTGCCCGAGAGCTCCAGGCCTGGGTACAGCAGCACTGCC  
 TGAGAGTGCAGAGGAGGCGTCACTCTCTGGAAGACCTGGAGCAAGAAGTGGATGAGCCTGGACTGCAG  
 GTCTCATCTCAAATGAACAGAAGCAGTCTGGGAGAAAAATCAACTTCAGGAAGTGAATGGAGTCTCT  
 TAAGCAGCACTGAGACCCAGCCTGTGGATGCCAGCCCTAAATATGAGTTTTGGGGGCCCTGTACATCCA  
 AGAGACTGGTGAAGAGGAGTTTTCACTCAGGACCCAAGAAAGCGCCAAGTTTTAAATTGAATCCGCAG  
 AAGGAGGACTCAGCAGATGAGCAGAGAAGTTCTGAAGAAGAGTCTCATGCAGGTGGACTCAAAGAAACA  
 TCATGCCCATGATCACTGCCAATAAGTATGGATCGAGGTCAGAAAGGCAGTGGGCCAACCACTGGAAAG  
 GGAGAGAGGGGCAAAAGCCTCTCTTCAAGACACGGGATCCAGGAAAGGGGAGAACACAGCGTCTGCTAGG  
 CCTGCTCCAGGAGAGAAACGTTACATATGTGCAGAGTGTGGGAAGGCCTTAGCAATAGCTCAAACCTCA  
 CTAACACCGGAGAACACACACTGGGGAGAAGCCTTACGTGTGCACCAAGTGTGGGAAGGCTTTCAGCCA  
 CAGCTCCAACCTTACCCTTCAATTACCGGACACATCTGGTGGACCGGCCCTATGACTGTAAGTGTGGGAAA  
 GCCTTTGGGCAGAGCTCAGACCTCCTTAAACATCAGAGGATGCACACAGAAGAGGCGCCCTATCAGTGTA  
 AAGACTGTGGAAAGCCTTCAGTGGGAAGGGCAGCCTCATTTCGACACTATCGCATCCACACAGGGGAGAA  
 GCCCTATCAGTGAATGAGTGTGGAAAGAGTTTTAGTCAGCATGCAGGTCTCAGTTCCCATCAACGCCTG  
 CATACAGGGGAGAAACCTATAAGTGAAGGAGTGTGGCAAAGCCTTCAACCATAGTTTCAATTTAATA  
 AGCATCACAGAATCCATACTGGTAAAAACCTATTGGTGAACCACTGTGGGAAAACCTTCTGTAGCAA  
 GTCAAATCTTTCAAGCATCAGAGAGTCCACACTGGAGAGGGAGAGGTACAG

**ACGCGT**ACGCGGCCGCTCGAGCAGAAACTCATCTCAGAAGAGGATCTGGCAGCAAATGATATCCTGGATT  
 ACAAGGATGACGACGATAAGGTTTAA

**Protein Sequence:**

>RR215516 representing NM\_001012021  
 Red=Cloning site Green=Tags(s)

MTKVVGMA TVLGPRPPQESMGPSPIKVEEDEEKDKRPSLELSRKRFRQSRNQDTLEPMGPSTIKAE<sup>EEE</sup>  
 DKDKGHP SLELSRKSFKQFGYHDTLEQLGPSTVKAEEDEEKDKGRPSLEISRQRFRQFGYHDTPGPREAL  
 SQLRVL CCEWLQPEIHTKEQILELLVLEQFLTILPRELQAWVQHCPE SAEEAVTLLEDLEQELDEPGLQ  
 VSSPNEQKQSWEKISTSGTAMESLSSTETQPVDASPKYEFWGPLYIQETGEEEVFTQDPRKRQGFKLNPQ  
 KEDSADEQRSSEEE SHAGGLKRNIMPMITANKYGSRSERQWANNLERERGA KASLQDTGSRKGAEPASAR  
 PAPGEKRYICAECGKAFSNSSNLTKHRRHTGKPYVCTKCGKAFSHSSNLTLHYRTHLVDRPYDCKCGK  
 AFGQSSDLLKHQRMHTEEAPYQCKDCGKAFSGKSLIRHYRIHTGKPYQCNECGKSF SQHAGLSSHQRL  
 HTGKPYKCEGKAFNHSSNFNKHRIHTGKPYWCNHCCKTFCSKSNLSKHQRVHTGEGEVQ

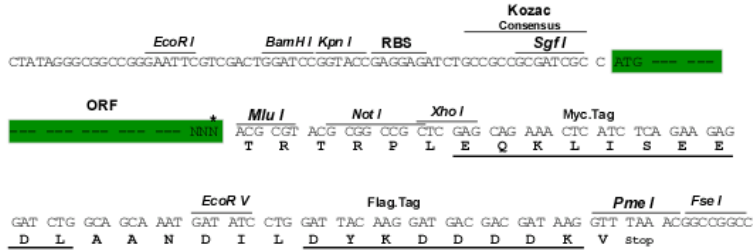
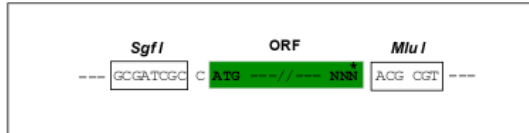
**TR**TRPLEQKLI SEEDLAANDILDYKDDDDKV

**Restriction Sites:**

SgfI-MluI

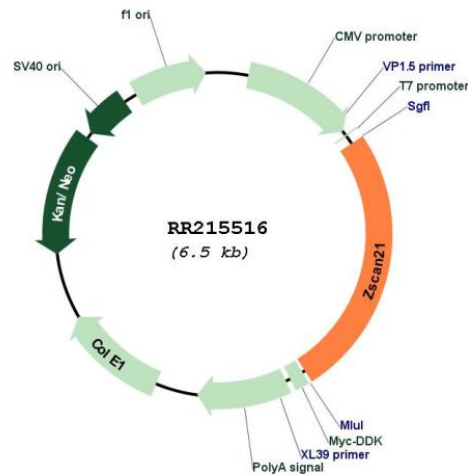
Cloning Scheme:

Cloning sites used for ORF Shutting:



\* The last codon before the Stop codon of the ORF

Plasmid Map:



<b>ACCN:</b>	NM_001012021
<b>ORF Size:</b>	1662 bp
<b>OTI Disclaimer:</b>	The molecular sequence of this clone aligns with the gene accession number as a point of reference only. However, individual transcript sequences of the same gene can differ through naturally occurring variations (e.g. polymorphisms), each with its own valid existence. This clone is substantially in agreement with the reference, but a complete review of all prevailing variants is recommended prior to use. <a href="#">More info</a>
<b>OTI Annotation:</b>	This clone was engineered to express the complete ORF with an expression tag. Expression varies depending on the nature of the gene.
<b>Components:</b>	The ORF clone is ion-exchange column purified and shipped in a 2D barcoded Matrix tube containing 10ug of transfection-ready, dried plasmid DNA (reconstitute with 100 ul of water).
<b>Reconstitution Method:</b>	<ol style="list-style-type: none"><li>1. Centrifuge at 5,000xg for 5min.</li><li>2. Carefully open the tube and add 100ul of sterile water to dissolve the DNA.</li><li>3. Close the tube and incubate for 10 minutes at room temperature.</li><li>4. Briefly vortex the tube and then do a quick spin (less than 5000xg) to concentrate the liquid at the bottom.</li><li>5. Store the suspended plasmid at -20°C. The DNA is stable for at least one year from date of shipping when stored at -20°C.</li></ol>
<b>RefSeq:</b>	<a href="#">NM_001012021.2</a> , <a href="#">NP_001012021.1</a>
<b>RefSeq Size:</b>	2218 bp
<b>RefSeq ORF:</b>	1665 bp
<b>Locus ID:</b>	304342
<b>Cytogenetics:</b>	12q11
<b>MW:</b>	63 kDa