

Product datasheet for **RR215503**

Ascl1 (NM_022384) Rat Tagged ORF Clone

Product data:

Product Type:	Expression Plasmids
Product Name:	Ascl1 (NM_022384) Rat Tagged ORF Clone
Tag:	Myc-DDK
Symbol:	Ascl1
Synonyms:	Mash1
Mammalian Cell Selection:	Neomycin
Vector:	pCMV6-Entry (PS100001)
E. coli Selection:	Kanamycin (25 ug/mL)
ORF Nucleotide Sequence:	>RR215503 representing NM_022384 Red=Cloning site Blue=ORF Green=Tags(s)

TTTTGTAATACGACTCACTATAGGGCGGCCGGAATTCGTCGACTGGATCCGGTACCGAGGAGATCTGCC
GCC**CGATCGCC**

ATGGAGAGCTCTGGCAAGATGGAGAGCGGAGCCGGCCAGCAGCCGAGCCTCCGCAGCCCTTCTGCCGC
CTGCAGCCTGCTTCTTTGCGACCGCGGCCGCGCGGCCGCGCGGCCGCGGCCGAGCGGCAGCTCAGAGCGC
GCAGCAGCAACAGCAGCAGCAGGCGCCGAGCAGCAGGCGCCGAGCTGAGCCCGGTGGCGGACGGCCAG
CCCTCAGGGGGCGGTACAAGTCAGCGGCAAGCAGGTCAAGCGCCAGCGCTCGTCTCTCCGAACTGA
TGGCTGCAAACCGCGCTCAACTTCAGTGGCTTCGGCTACAGCCTCCACAGCAGCAGCCGGCAGCCGT
GGCGCGCCGCAACGAGCGGAGCGCAACCGGGTCAAGTTGGTTAACCTGGGCTTTGCCACCTCCGGGAG
CATGTCCCAACGGCGCTGCCAACAAGAAGATGAGCAAGGTGGAGACGCTGCGTTTCGGCGGTGGAATACA
TCCGCGCGCTGCAGCAGCTGCTGGACGAGCAGATGCGGTGAGCGCTGCCTTCCAGGCGGGCGTCTGTCC
GCCACCATCTCCCCAACTACTCCAACGACTTGAAGTCTATGGCGGGTTCTCCGGTTTCGTCTACTCC
TCCGACGAGGGATCTACGACCCCTTAGTCCAGAGGAACAAGAGCTGCTGGACTTTACCAACTGGTTC

ACGCGTACGCGGGCGCTCGAGCAGAACTCATCTCAGAAGAGGATCTGGCAGCAATGATATCTGGATT
ACAAGGATGACGACGATAAGGTTTAA



[View online »](#)

Protein Sequence: >RR215503 representing NM_022384
 Red=Cloning site Green=Tags(s)

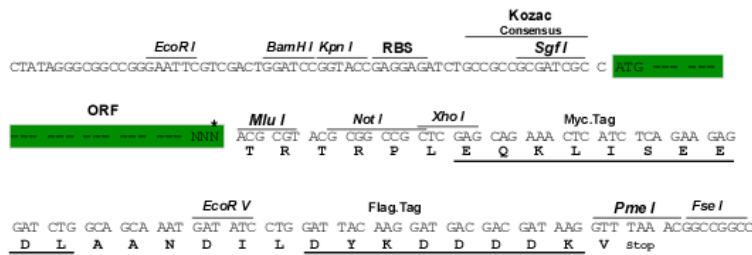
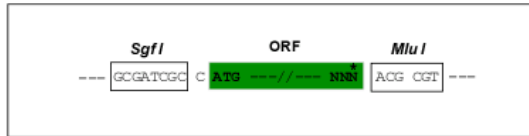
MESGGKMEAGAGQPPQPFLPPAACFFATAAAAAAAAAAAAAQSAQQQQQAPQQAPQLSPVADGQ
 PSGGGHKSAAKQVKRQRSSPELMRCKRRLNFSGFGYSLPQQPAAVARRNERERNRVLVNLGFATLRE
 HVPNGAANKKMSKVETLRSAYEYIRALQQLLDEHDAVSAAFQAGVLSPTISPNYSNDLNSMAGSPVSSYS
 SDEGSYDPLSPEEQELLDFTNWF

TRTRPLEQKLISEEDLAANDILDYKDDDDKV

Restriction Sites: SgfI-MluI

Cloning Scheme:

Cloning sites used for ORF Shuttling:



* The last codon before the Stop codon of the ORF

ACCN: NM_022384

ORF Size: 699 bp

OTI Disclaimer: The molecular sequence of this clone aligns with the gene accession number as a point of reference only. However, individual transcript sequences of the same gene can differ through naturally occurring variations (e.g. polymorphisms), each with its own valid existence. This clone is substantially in agreement with the reference, but a complete review of all prevailing variants is recommended prior to use. [More info](#)

OTI Annotation: This clone was engineered to express the complete ORF with an expression tag. Expression varies depending on the nature of the gene.

Components: The ORF clone is ion-exchange column purified and shipped in a 2D barcoded Matrix tube containing 10ug of transfection-ready, dried plasmid DNA (reconstitute with 100 ul of water).

Reconstitution Method:

1. Centrifuge at 5,000xg for 5min.
2. Carefully open the tube and add 100ul of sterile water to dissolve the DNA.
3. Close the tube and incubate for 10 minutes at room temperature.
4. Briefly vortex the tube and then do a quick spin (less than 5000xg) to concentrate the liquid at the bottom.
5. Store the suspended plasmid at -20°C. The DNA is stable for at least one year from date of shipping when stored at -20°C.

RefSeq Size: 1656 bp

RefSeq ORF: 702 bp

Locus ID: 64186

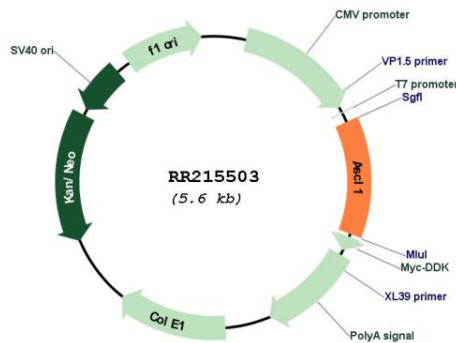
UniProt ID: [P19359](#)

Cytogenetics: 7q13

MW: 25 kDa

Gene Summary: plays a role in neurogenesis of the autonomic nervous system [RGD, Feb 2006]

Product images:



Circular map for RR215503