

Product datasheet for **RR215488**

Agk (NM_001127497) Rat Tagged ORF Clone

Product data:

Product Type:	Expression Plasmids
Product Name:	Agk (NM_001127497) Rat Tagged ORF Clone
Tag:	Myc-DDK
Symbol:	Agk
Synonyms:	RGD1562046
Vector:	pCMV6-Entry (PS100001)
E. coli Selection:	Kanamycin (25 ug/mL)
Cell Selection:	Neomycin
ORF Nucleotide Sequence:	>RR215488 representing NM_001127497 Red=Cloning site Blue=ORF Green=Tags(s)

TTTTGTAATACGACTCACTATAGGGCGCCGGAATTCGTCGACTGGATCCGGTACCGAGGAGATCTGCC
GCC**CGATCGCC**

ATGACCACATTCTTTAAACACTTCGAAATCATTGGAAGAAAACACAGCTGGCCTCTGCTTGCTGACAT
GGGAGGTCAGTCTATGAAAAGCACTGTGATAACCTGCTAAGAAGAGCAGCTTGCAAGAAGCTCA
GGTGTGGCAACCAGCTCATTCTCCCAATGCACAAGTGAAGAAAGCCACCGTCTTTCTCAATCTGCA
GCTTGCAAAGGCAAAGCCAGAAGCTATTTGAAAAAATGCTGCCCAATTTTACACCTGTCTGGCATGG
ATGTGACTGTCGTCGAAGACAGATTATGAGGGACAAAGCAAGCAAGCTCTGGAGTTGATGGAACGACCGA
TGTGATCATTGTTGCTGGAGGAGATGGCACCTGCAGGAGTTGTTACTGGAGTACTTAGAAGAAGAT
GAGGCTACCTCAGTAAGATTCCAATTGGATTTATCCCGCTGGGACAGACCAGTAGTTTGGAGTACACCC
TCTTTGCTGAAAGTGAAACAAAGTCCAACATGTCACAGATGCCGCACTGGCCATTGTGAAAGGGGAGAC
TGTTCCACTTGACGCTCTGCAGATCAAGGGTAAAAAGAACAGCCTGTCTATGCCATGACCGGCCCTCCGG
TGGGATCCTTCAGAGATGCTGGCGTCAAAGTTAGCAAGTACTGGTATCTTGGTCCTCTAAAAACCAAAG
CAGCCACTTTTTAGCACTCTTCAGGAGTGGCCTCAGACCCATCAGGCCATCTCTTACACGGGCC
TACAGAGAGACCTCCATTGGGCCTGAAGATGCTGCTCCCGGCCCTTCTGTACAGGAGAATATTACGT
AGGCTTGCTCATTCTGGGCACAGCCACAGGATGCCTTCTCCCCAGAGGTGAGCCCTGAGGTCTGAAAAG
ATGTACAAGTGTCCACATTGAACTGTCCATCACAACCCGAAACACCCAATTGACCTGACGAGCAAAGA
GGACTTTATGAACATTTGCATTGAGCCTGACACTGTGAGCAAGGAGATTTATAATCATAGGCAGTAAG
AAGGTGAGAGACCCTGGTCTGCGAGCAGCCGCCAGGAGTGTCTCCAGCCAGCCGCTGCACTCTGTCTC
TTCTGAGGAACTGAGGGCTCCTCAGCATCGACAGCGAGGAGTATGAAGCCATGCCTGTGGAGGTCAA
ACTCCTGCCAGAAAACCTCAGTCTTCTGTGATCCAAGGAAGAGAGCAAATGCTGCAGAGCACATCC
CAG

ACGCGTACGCGGCCGCTCGAGCAGAAAACATCTCAGAAGAGGATCTGGCAGCAAATGATATCCTGGATT
ACAAGGATGACGACGATAAGGTTTAA



Protein Sequence: >RR215488 representing NM_001127497
 Red=Cloning site Green=Tags(s)

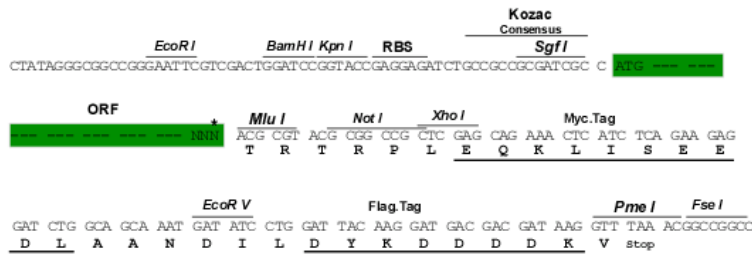
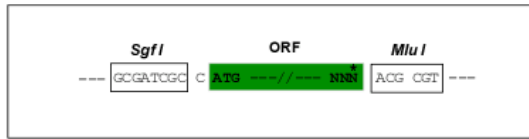
MTTFFKTLRNHWKKTAGLCLL TWGGHWLYGKHCDNLLRRAACQEAQVFGNQLIPPNAQVKKATVFLNPA
 ACKGKARTLFEKNAAPILHLSGMDVTVVKTDYEGQAKLLELMETTDVIVAGGDGTLQEVVTGVLRRTD
 EATFSKIPIGFIPLGQTSSL SHTLFAESGNKVQHVTDAALAI VKGETVPLDLVLIKGEKEQPYYAMTGLR
 WGSFRDAGVKVSKYWYLGPLKTKAAHFFSTLQEW P QTHQASISYTGPTERPPIGPEDAAPRPSLYRRILR
 RLASFWAQPQDAFSEVSP EVWKDVLSTIELSITRNTQLDLTSKEDFMNICIEPDTVSKGFIIIGSK
 KVRDPGLRAAGTECLHASRCTL S LPEGTEGSFSIDSEEYEAMPVEVKLLPRKLQFC DPRKREQLQSTS
 Q

TRTRPLEQKLISEEDLAANDILDYKDDDDKV

Restriction Sites:
 Cloning Scheme:

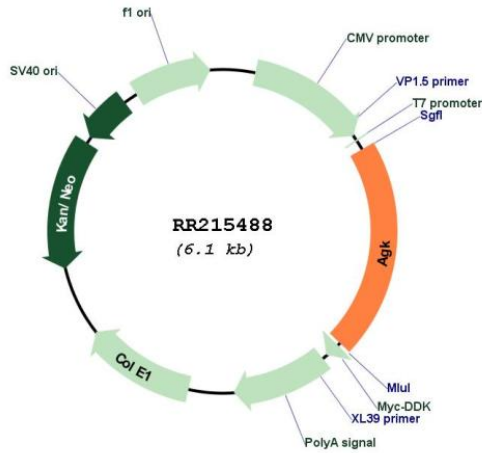
SgfI-MluI

Cloning sites used for ORF Shuttling:



* The last codon before the Stop codon of the ORF

Plasmid Map:



ACCN: NM_001127497

ORF Size:	1263 bp
OTI Disclaimer:	The molecular sequence of this clone aligns with the gene accession number as a point of reference only. However, individual transcript sequences of the same gene can differ through naturally occurring variations (e.g. polymorphisms), each with its own valid existence. This clone is substantially in agreement with the reference, but a complete review of all prevailing variants is recommended prior to use. More info
OTI Annotation:	This clone was engineered to express the complete ORF with an expression tag. Expression varies depending on the nature of the gene.
Components:	The ORF clone is ion-exchange column purified and shipped in a 2D barcoded Matrix tube containing 10ug of transfection-ready, dried plasmid DNA (reconstitute with 100 ul of water).
Reconstitution Method:	<ol style="list-style-type: none">1. Centrifuge at 5,000xg for 5min.2. Carefully open the tube and add 100ul of sterile water to dissolve the DNA.3. Close the tube and incubate for 10 minutes at room temperature.4. Briefly vortex the tube and then do a quick spin (less than 5000xg) to concentrate the liquid at the bottom.5. Store the suspended plasmid at -20°C. The DNA is stable for at least one year from date of shipping when stored at -20°C.
RefSeq:	NM_001127497.1 , NP_001120969.1
RefSeq Size:	2228 bp
RefSeq ORF:	1266 bp
Locus ID:	502749
Cytogenetics:	4q22-q23
MW:	46.8 kDa