

Product datasheet for **RR215467**

Nefm (NM_017029) Rat Tagged ORF Clone

Product data:

Product Type:	Expression Plasmids
Product Name:	Nefm (NM_017029) Rat Tagged ORF Clone
Tag:	Myc-DDK
Symbol:	Nefm
Synonyms:	Nef3; Nfm
Vector:	pCMV6-Entry (PS100001)
E. coli Selection:	Kanamycin (25 ug/mL)
Cell Selection:	Neomycin



[View online »](#)

ORF Nucleotide Sequence:

>RR215467 representing NM_017029
 Red=Cloning site Blue=ORF Green=Tags(s)

TTTTGTAATACGACTCACTATAGGGCGGCCGGAATTCGTCGACTGGATCCGGTACCGAGGAGATCTGCC
 GCC**CGGATCGCC**

ATGAGCTACACGCTGGACTCGCTGGCAACCCGTCGCTACCGCGCGTCAACCAGACCCCGTCCAGCT
 TCAGTCGTGTGAGCGGTTCCCGTCCAGCGGCTTCCGCTCGCAGTCTTGGTCCCGCGGCTCGCCAGCAC
 CGTGTCTCTCTACAAGCGCAGCGCGCTCGCCCGCGCTCGCTACAGCTCGGCTATGCTCAGCTCG
 GCCGAGAGCAGCCTCGACTTCAGCCAGTCTCTCGCTGCTTAACGGCGGCTCCGGCGGCGACTACAAGC
 TGTCCCGCTCAAACGAGAAAGAGCAGCTGCAGGGGCTGAACGACCGTTTCGCCGGCTACATCGAGAAAGT
 GCACTACTTGAACAACAGAACAAGGAGATCGAGGCAGAGATCCACGCGTGCAGGAGAAGCAGGCTCG
 CACGCCAGCTGGGTGACGCTTACGACCAGGAGATCCGAGAGTGCAGCGCCACCTGGAGATGGTGAATC
 ACGAGAAGGCTCAAGTGCAGCTGGACTCTGATCACTTGGAGGAAGACATCCACCGCTCAAGGAGCGCTT
 CGAGGAGGAGGCGCGGCTGCGGGACGACACCGAGGCTGCCATCCGGCGCTGCGCAAAGACATAGAGGAG
 TCGTCGATGGTTAAGGTGGAGCTGGACAAGAAGGTGACGTGCTGCAAGATGAGGTGGCCTTCTGCCGA
 GCAATCACGAAGAGGAGGTGGCCGACCTGCTGGCCAGATCCAGGCGTCCACATCACCGTAGAGCGCAA
 AGACTACCTGAAGACAGACATCTCCACGGCGTAAAAGAGATCCGCTCCAGCTCGAGTGTCACTCCGAC
 CAGAACATGCACCAGGCCGAAGAGTGGTTCAAATGCCGCTACGCCAAGCTCACCGAGGCGGCCGAGCAGA
 ACAAGGAGGCCATCCGCTCCGCTAAAGAAGAGATCGCCGAGTACCGGCGCCAGCTGCAGTCCAAGAGCAT
 TGAGCTCGAGTCGGTGCAGGCACTAAGGAGTCCCTGGAACGGCAGCTCAGCGACATCGAGGAGCGCCAC
 AACCCAGCTCAGCAGTACCAGGACACCATCCAGCAGCTGAAAATGAGCTTCGGGGAACAAAGTGGG
 AAATGGCTCGTCATTTGCGAGAATACCAGGATCTCCTAACGTCGAAGTGGCTCTGGACTCGC
 CGCATATAGGAACTACTGGAGGGTGAAGAGACCAGATTTAGCACATTTTCAGGAAGCATCACTGGGCT
 CTGTACACACACCGACAGCCCTCAGTACAATATCCAGTAAAGTTCAGAAGACAAAGTCCAGGCCCCCA
 AGCTCAAGGTCCAACACAAATTTGTGGAGGAGATCATTGAGGAGACTAAAGTGAAGATGAGAAGTCAGA
 AATGGAAGACGCCCTCACAGTATTGCAGAGGAATTGGCAGCCTCTGCCAAAGAGGAGAAAGAAGAGGCA
 GAAGAAAAGGAAGAGGAACCGGAAGTTGAAAAGTCTCCCGTGAAGTCTCCTGAGGCTAAGGAAGAGGAGG
 AAGGGGAAAAGGAGGAAGAAGAGGAAGGCAAGAGGAAGAAGAGGAGGAAGATGAAGGTGTCAAGTCAGA
 CCAGGCAGAAGAGGAGGATCTGAGAAGGAAGGCTCGAGTAAAAGGATGAAGGTGAGCAAGAAGAAGAA
 GGGGAAACTGAGGCAGAAGGTGAAGGAGAGGAAGCAGAAGCTAAGGAGGAAAAGAAAACAGAGGAAAGG
 TCGAGGAAATGGCTATCAAGGAGGAAATCAAGGTGAGAAAGCCGAGAAAGCCAAGTCCCCTGTGCCAAA
 ATCACCCGTGGAAGAAGTAAAGCAAAACAGAAAGCCAAAGCCGAAAGGATGAGCAGAAGGAGGAAGAG
 AAAGTTGAGGAGAAGAAGGAGGTAGCCAAGGAATCACCCAAGGAAGAGAAGGTGGAGAAAAGGAGGAGA
 AGCCAAAAGATGTCCAGATAAAAAGAAGGCTGAGTCCCAGTAAAAGAAAAGGCCGTAGAGGAAATGAT
 CACCATTACTAAGTCGGTAAAGGTGAGCCTGGAGAAAGACACCAAGAGGAGAAGCCTCAGCAGCAGGAG
 AAGGTGAAGGAGAAGGCAGAGGAGGAGGGGGTGTGAGGAGGAAGTGGGTGACAAAAGCCCGCAAGAT
 CCAAGAAGGAAGACATAGCTATCAATGGGAGGTGGAAGGAAAAGAGGAGGAGGAGCAGGAACTCAGGA
 GAAGGGCAGTGGCAAGAGGAGGAGAAAAGGGTGGTCACTAATGGCTTAGATGTGAGCCCTGCGGAGGAA
 AAGAAAAGGGGAGGATAGAAGTGTGACAAAAGTGGTGGTGACCAAGAAGGTAGAAAAAATCACAGCGAGG
 GAGGCGATGGTGCTACCAAATACATACCAAATCTGTTACTGTCACTCAAAGGTTGAAGAGCATGAGGA
 GACCTTTGAGGAGAAGCTGGTGTCACTAAAAGGTAGAAAAGGTCACTTACATGCCATAGTCAAGGAA
 GTCACCCAGGGTGAC

ACGCGTACGCGGCCGCTCGAGCAGAACTCATCTCAGAAGAGGATCTGGCAGCAATGATATCCTGGATT
 ACAAGGATGACGACGATAAGGTTTAA

Protein Sequence: >RR215467 representing NM_017029
 Red=Cloning site Green=Tags(s)

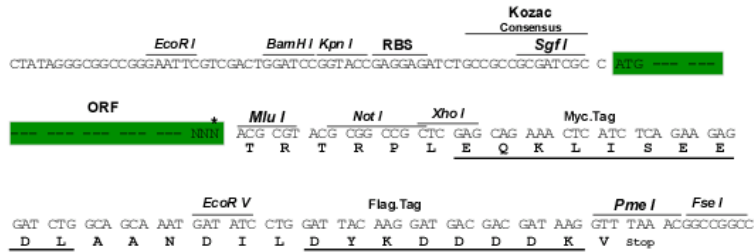
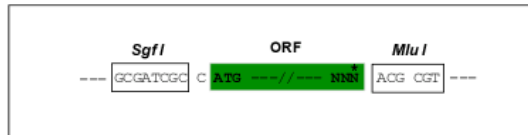
```
MSYTLDSLGNPSAYRRVTETPSSF SRVSGSPSSGFRSQSWSRGPSTVSSSYKRSALAPRLAYSSAMLSS
AESSLDFSQSSLLNGSGGDYKLSRSNEKEQLQGLNDRFAGYIEKVHYLEQQNKEIEAEIHALRQKQAS
HAQLGDAYDQEIRELRATLEMVNHEKAQVQLDSHLEEDIHRLKERFEEEARLRDDTEAAIRALRKDIEE
SSMVKVELDKKVQSLQDEVAFLRSNHEEEVADLLAQIQASHITVERKDYLKTDISTALKEIRSQLECHSD
QNMHQAEWFKCRYAKLTEAAEQNKEAIRSAKEEIAEYRRQLQSKSIELESVRGTKESSLERQLSDIEERH
NHDLSYQDTIQQLENELRGTKWEMARHLREYQDLLNVKMALDIEIAAYRKLEGEETRFSTFSGSITGP
LYTHRQPSVTISSKIQKTKVEAPKLVQHKFVEEIIIEETKVEDEKSEMEDALTVIAEELAASAKKEEKEA
EEKEEPEVEKSPVKSPKAEKEEKEEKEEKEEKEEKEEKEEKEEKEEKEEKEEKEEKEEKEEKEEKEE
GETEAEGEGEEAEAKEEKKTEGKVEEMAIKEEIKVEKPEKAKSPVVKSPVEEVKPKPEAKAGKDEQKEE
KVEEKVEVAKESPKKEKVEKKEEKPDPDPKKAESPVKEKAVEEMITITKSVKVSLEKDTKEEKPQQE
KVKEKAEKEEKGSEEEVGDKSPQESKKEDIAINGEVEGKEEKEEKEEKEEKEEKEEKEEKEEKEEKEE
KKGEDRSDDKVVVTKKVEKITSEGGDGTKYITKSVTVTKVVEEHEETFEEKLVSTKKVEKVTSHAIKVE
VTQGD
```

TRTRPLEQKLISEEDLAANDILDYKDDDDKV

Restriction Sites: Sgfl-Mlul

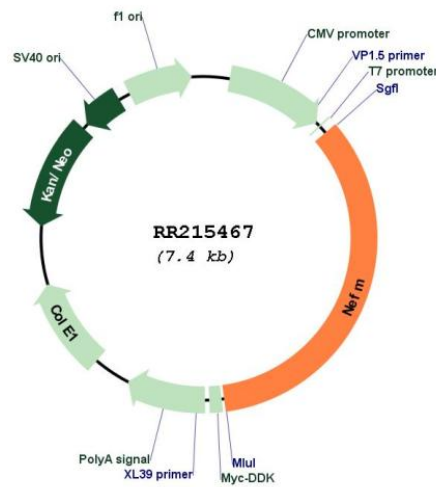
Cloning Scheme:

Cloning sites used for ORF Shuttling:



* The last codon before the Stop codon of the ORF

Plasmid Map:



ACCN:	NM_017029
ORF Size:	2535 bp
OTI Disclaimer:	The molecular sequence of this clone aligns with the gene accession number as a point of reference only. However, individual transcript sequences of the same gene can differ through naturally occurring variations (e.g. polymorphisms), each with its own valid existence. This clone is substantially in agreement with the reference, but a complete review of all prevailing variants is recommended prior to use. More info
OTI Annotation:	This clone was engineered to express the complete ORF with an expression tag. Expression varies depending on the nature of the gene.
Components:	The ORF clone is ion-exchange column purified and shipped in a 2D barcoded Matrix tube containing 10ug of transfection-ready, dried plasmid DNA (reconstitute with 100 ul of water).
Reconstitution Method:	<ol style="list-style-type: none">1. Centrifuge at 5,000xg for 5min.2. Carefully open the tube and add 100ul of sterile water to dissolve the DNA.3. Close the tube and incubate for 10 minutes at room temperature.4. Briefly vortex the tube and then do a quick spin (less than 5000xg) to concentrate the liquid at the bottom.5. Store the suspended plasmid at -20°C. The DNA is stable for at least one year from date of shipping when stored at -20°C.
RefSeq:	NM_017029.2 , NP_058725.1
RefSeq Size:	3067 bp
RefSeq ORF:	2538 bp
Locus ID:	24588
UniProt ID:	P12839
Cytogenetics:	15p12
MW:	95.6 kDa
Gene Summary:	neuronal intermediate filament protein; important component of the cytoskeleton [RGD, Feb 2006]