

Product datasheet for RR215454

Oprpn (NM_133513) Rat Tagged ORF Clone

Product data:

Product Type: Expression Plasmids
Product Name: Oprpn (NM_133513) Rat Tagged ORF Clone
Tag: Myc-DDK
Symbol: Oprpn
Synonyms: Muc10; Prol1; RSM-1
Mammalian Cell Selection: Neomycin
Vector: pCMV6-Entry (PS100001)
E. coli Selection: Kanamycin (25 ug/mL)
ORF Nucleotide Sequence: >RR215454 representing NM_133513
 Red=Cloning site Blue=ORF Green=Tags(s)

TTTTGTAAACGACTCACTATAGGGCGCCGGGAATTCGTCGACTGGATCCGGTACCGAGGAGATCTGCC
 GCC**CGGATCGCC**

ATGAAAAGGGAACTTTCATCTTGGCCTGTTGGCTCTTCTTTCATATTTACGCCTGGAGAAAGTCATC
 ACTTCCAGCCAAAACCACATCCATACCAAAGGCTACAGCAACCCATTTACCACAGACGACATTCACAAGT
 CTCTTCTATTTACCCAAGATATGGTCAATATCCAGTTATTTCTATGTTTCACAGAAACAGCAAGCTCAA
 AAACCTCAAATTTACCAATTCAACTCCATGGCAACGCGTCTGCCCTCCAGGATATACTGCGAGGCTGC
 TCCATTACCATTATTCTAGGTTTCTATGCATTCTAATAAACAGTTAACCTCTGACAAAATAGAAACAAA
 AGTCACTACACCAGCACAGACCACCAAGCCTACCACAGATTCAACCACACCAGCACCACCACCAAGCCT
 ACCACAGATTCACCACACCAGCACCAACCACCAAGCCTACCACAGATTCACCACACCAGCACCAGCCA
 CCAAGCCTACCACAGATTCACCACACCAGCACCAGCAACAAGCCTACCACAGATTCACCACACCAGC
 ACCGACCAACAAGCCTACCACAGATTCACCACACCAGCACCAGCACCACCAAGCCTACCACAGATTCACC
 ACACCAGCACCAGCACCACCAAGCCTACCACAGATTCACCACACCAGCACCACCAACCACCAAGCCTACCACAG
 ATTCACCACACCAGCACCAGCACCACCAAGCCTACCACAGATTCACCACACCAGCACCAGCACCACCAAGCC
 TACCACAGATTCACCACACCAGCACCAGCACCACAAAAATACCTACTACACCTAAGCCTAGCACCTCAACA
 GCCATACTACATCAACTAACTCTGCTAACAGCTTTCCTCTACTACTACATCAAGTACCACCATCCAAA
 CTACAACCTGTACACCTTTTCAACAGATGCTTCAGTGGCTTCAGATGTACTTTGGT

AG**CGGACCG**ACGCGTACGCGCCGCTCGAGCAGAACTCATCTCAGAAGAGGATCTGGCAGCAAATGATATCC
 TGGATTACAAGGATGACGACGATAAGGTTTAA



[View online »](#)

Protein Sequence: >RR215454 representing NM_133513
 Red=Cloning site Green=Tags(s)

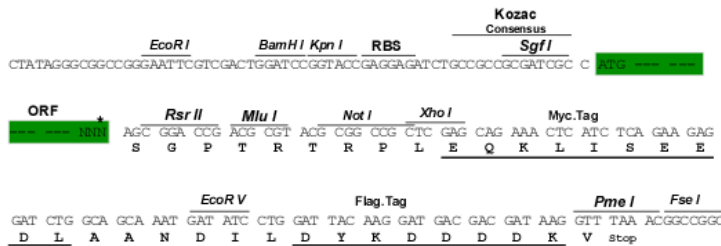
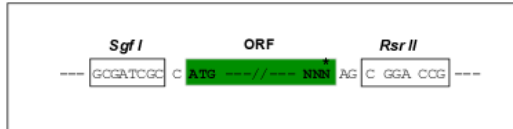
MKRETFILGLLALLSYFTPGESHFFQPKPHPYQRLQQPIYHRRHSQVSSIYPRYGQYPRYFVVSQKQQAQ
 KPQILPIQTPWQRVCPGTYARLLHYHSRFLCIPNKQLTSDKIETKVTPAQTTKPTDSTTPAPTTKP
 TTDSTTPAPTTKPTDSTTPAPTTKPTDSTTPAPTNKPTDSTTPAPTNKPTDSTTPAPTTKPTDST
 TPAPTTKPTDSTTPAPTTKPTDSTTPAPTTKPTDSTTPAPTTKPTDSTTPAPTTKPTDSTTPAPTTKPTDST
 AIPTSTNSANSSSTTSSTTIQTTLSPFQQLQWLQMYFG

SGPTRTRPLEQKLISEEDLAANDILDYKDDDDKV

Restriction Sites: SgfI-RsrII

Cloning Scheme:

Cloning sites used for ORF Shuttling:



* The last codon before the Stop codon of the ORF

ACCN: NM_133513

ORF Size: 966 bp

OTI Disclaimer: The molecular sequence of this clone aligns with the gene accession number as a point of reference only. However, individual transcript sequences of the same gene can differ through naturally occurring variations (e.g. polymorphisms), each with its own valid existence. This clone is substantially in agreement with the reference, but a complete review of all prevailing variants is recommended prior to use. [More info](#)

OTI Annotation: This clone was engineered to express the complete ORF with an expression tag. Expression varies depending on the nature of the gene.

Components: The ORF clone is ion-exchange column purified and shipped in a 2D barcoded Matrix tube containing 10ug of transfection-ready, dried plasmid DNA (reconstitute with 100 ul of water).

Reconstitution Method:

1. Centrifuge at 5,000xg for 5min.
2. Carefully open the tube and add 100ul of sterile water to dissolve the DNA.
3. Close the tube and incubate for 10 minutes at room temperature.
4. Briefly vortex the tube and then do a quick spin (less than 5000xg) to concentrate the liquid at the bottom.
5. Store the suspended plasmid at -20°C. The DNA is stable for at least one year from date of shipping when stored at -20°C.

RefSeq: [NM_133513.1](#), [NP_598197.1](#)

RefSeq Size: 1226 bp

RefSeq ORF: 969 bp

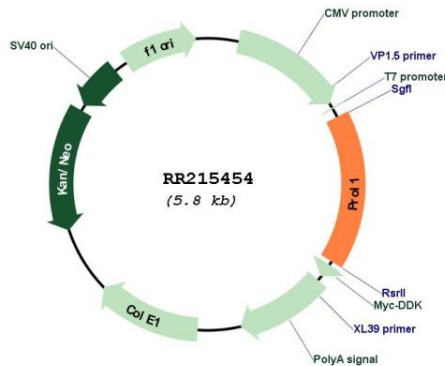
Locus ID: 65182

Cytogenetics: 14p22

MW: 35 kDa

Gene Summary: a submandibular gland apomucin [RGD, Feb 2006]

Product images:



Circular map for RR215454